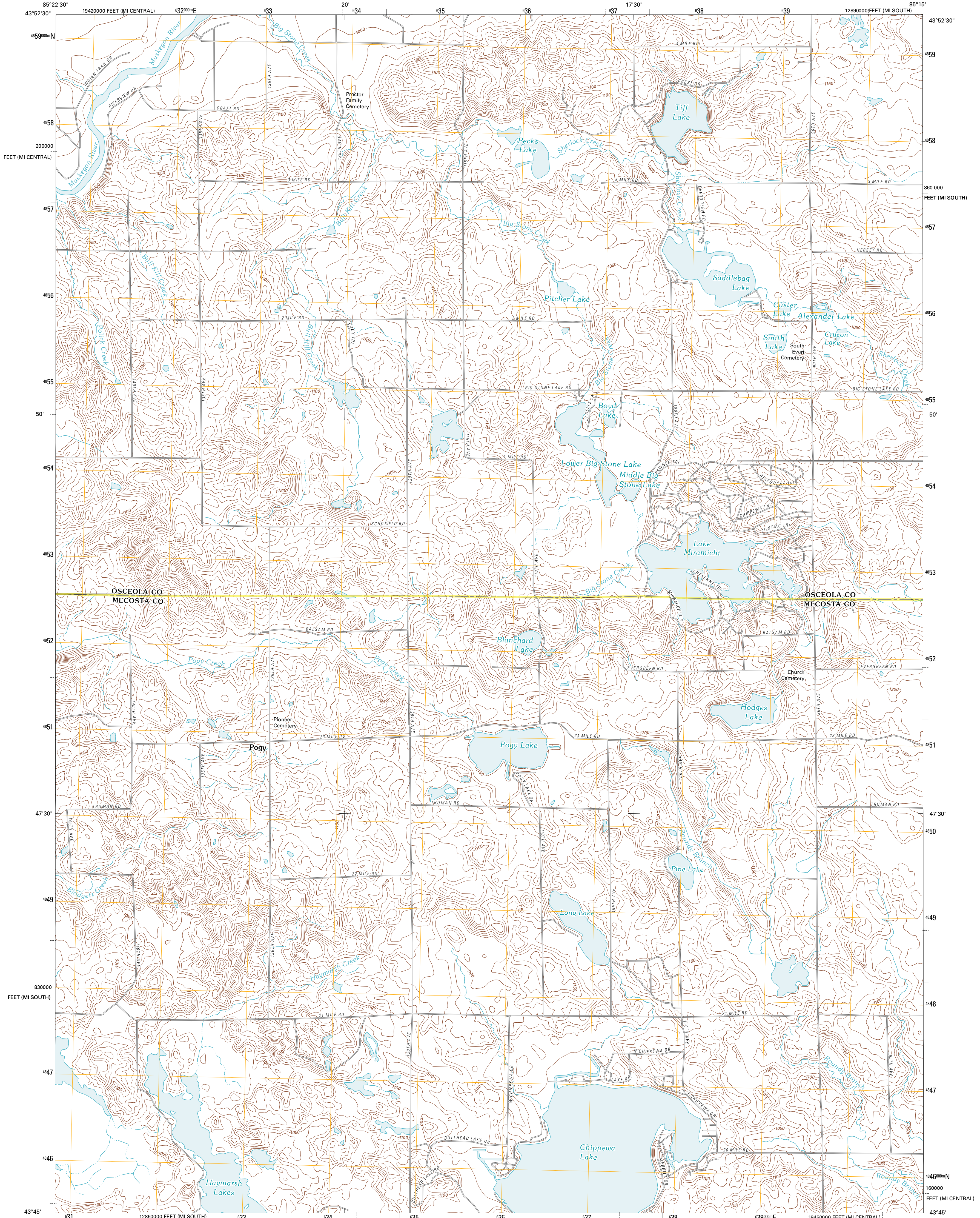




U.S. DEPARTMENT OF THE INTERIOR
U. S. GEOLOGICAL SURVEY

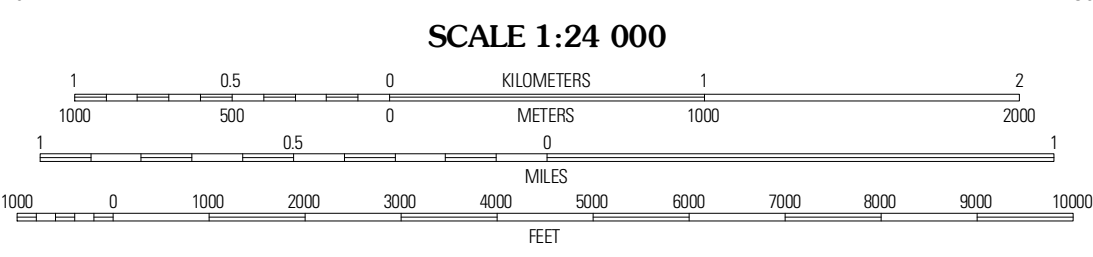
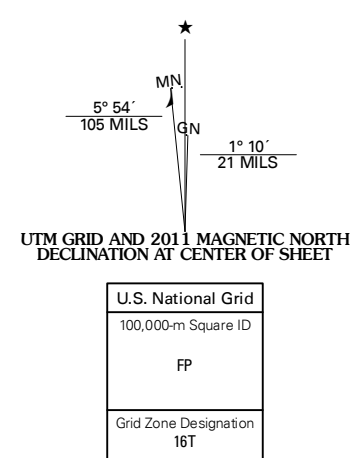


CHIPPEWA LAKE NORTH QUADRANGLE
MICHIGAN
7.5-MINUTE SERIES



Produced by the United States Geological Survey
North American Datum of 1983 (NAD83)
World Geodetic System of 1984 (WGS84). Projection and
1 000-meter grid: Universal Transverse Mercator, Zone 16T
10 000-foot ticks: Michigan Coordinate System of 1983
(south and central zones)

Imagery.....NAIP, July 2009
Roads.....©2006-2010 Tele Atlas
Names.....©2010
Hydrography.....National Hydrography Dataset, 2009
Contours.....National Elevation Dataset, 1999
Boundaries.....Census, IBWC, IBC, USGS, 1972 - 2010



CONTOUR INTERVAL 10 FEET
NORTH AMERICAN VERTICAL DATUM OF 1988

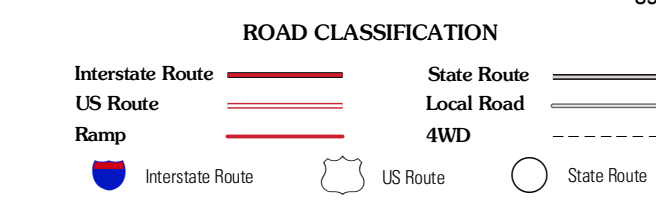
This map was produced to conform with version 0.5.10
of the USGS US Topo Product Standard.
A metadata file associated with this product is draft version 0.5.16



QUADRANGLE LOCATION

Starbough Corner	Exart	Sears
Hersey	Chippewa Lake North	Merrill Lake
Big Rapids	Chippewa Lake South	Mecosta NW

ADJOINING 7.5' QUADRANGLES



CHIPPEWA LAKE NORTH, MI
2011