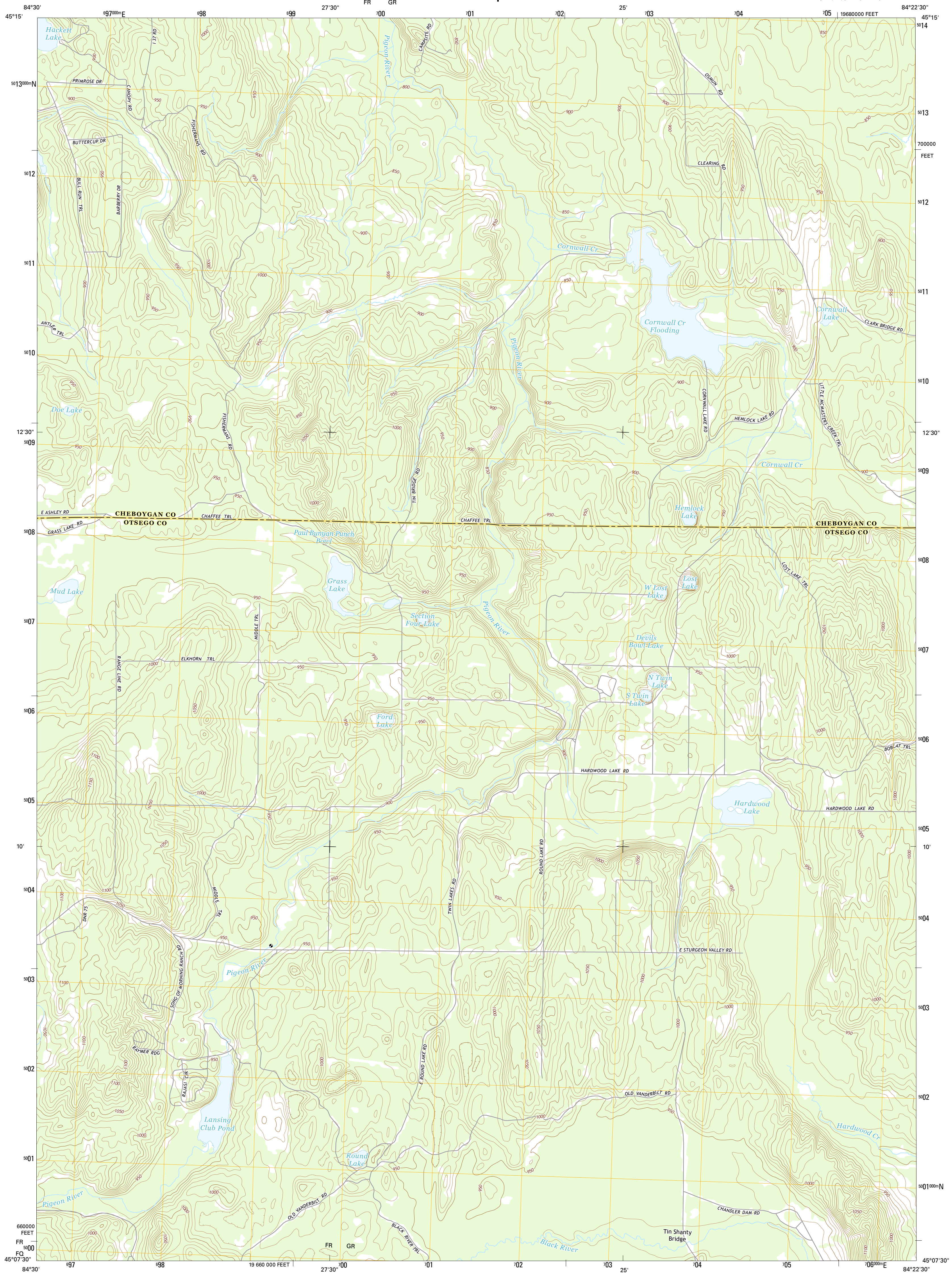




U.S. DEPARTMENT OF THE INTERIOR
U.S. GEOLOGICAL SURVEY



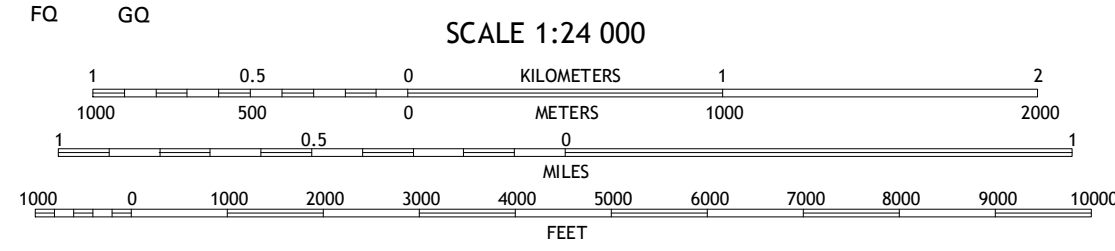
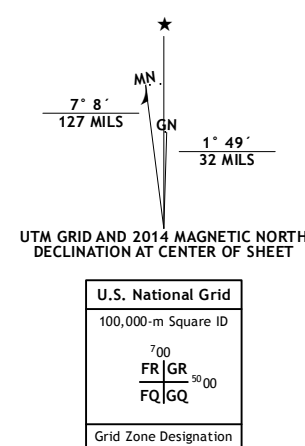
HARDWOOD LAKE QUADRANGLE
MICHIGAN
7.5-MINUTE SERIES



Produced by the United States Geological Survey
North American Datum of 1983 (NAD83)
World Geodetic System of 1984 (WGS84), Projection and
1 000-meter grid: Universal Transverse Mercator, Zone 16T
10 000-foot ticks: Michigan Coordinate System of 1983 (central zone)

This map is not a legal document. Boundaries may be generalized for this map scale. Private lands within government reservations may not be shown. Obtain permission before entering private lands.

Imagery.....NAIP July 2012
Roads.....HERE ©2013
Names.....GNIS 2013
Hydrography.....National Hydrography Dataset, 2012
Contours.....National Elevation Dataset, 1999
Boundaries.....Multiple sources; see metadata file 1972 - 2013
Public Land Survey System.....BLM, 2011



ROAD CLASSIFICATION

- Expressway
- Secondary Hwy
- Ramp
- Interstate Route
- Local Connector
- Local Road
- 4WD
- US Route
- State Route

CONTOUR INTERVAL 10 FEET
NORTH AMERICAN VERTICAL DATUM OF 1988

This map was produced to conform with the National Geospatial Program US Topo Product Standard, 2011. A metadata file associated with this product is draft version 0.6.16

1	2	3
4	5	6
7	8	

ADJOINING QUADRANGLES

- 1 Wolverine
- 2 Afton
- 3 Tower
- 4 Green Timbers
- 5 Silver Lake
- 6 Sparr
- 7 Saunders Creek
- 8 Hetherton

HARDWOOD LAKE, MI
2014

