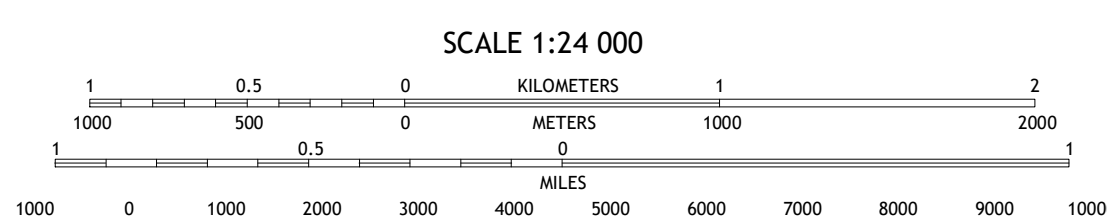
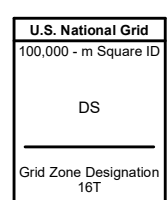
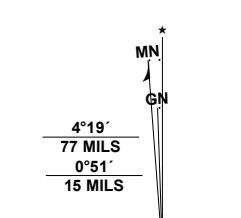


Produced by the United States Geological Survey

North American Datum of 1983 (NAD83)
World Geodetic System of 1984 (WGS84), Projection and
1 000-meter grid; Universal Transverse Mercator, Zone 16T
This map is not a legal document. Boundaries may be
generalized for this map scale. Private lands within government
reservations may not be shown. Obtain permission before
entering private lands.

Imagery.....NAIP, August 2016 - October 2016
Roads.....U.S. Census Bureau, 2016
Names.....GNIS, 1980 - 2007
Hydrography.....National Hydrography Dataset, 1989 - 2018
Contours.....National Elevation Dataset, 1999
Boundaries.....Multiple sources; see metadata file 2017 - 2018
Public Land Survey System.....BLM, 2018
Wetlands.....FWS National Wetlands Inventory 2005



CONTOUR INTERVAL 20 FEET
NORTH AMERICAN VERTICAL DATUM OF 1988
This map was produced to conform with the
National Geospatial Program US Topo Product Standard, 2011.
A metadata file associated with this product is draft version 0.6.18

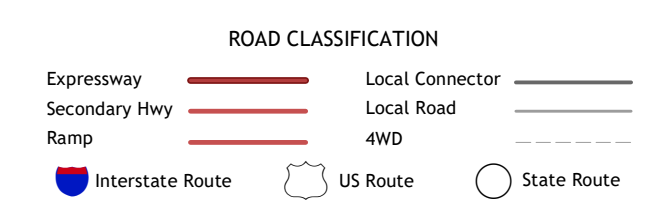


QUADRANGLE LOCATION

1	2	3
4	5	6
7	8	

ADJOINING QUADRANGLES

- 1 Ned Lake SE
- 2 Hickman Lake
- 3 Witch Lake
- 4 Kelso Junction
- 5 Channing
- 6 Crystal Falls
- 7 Lake Mary
- 8 Segola



KIERNAN, MI
2019

