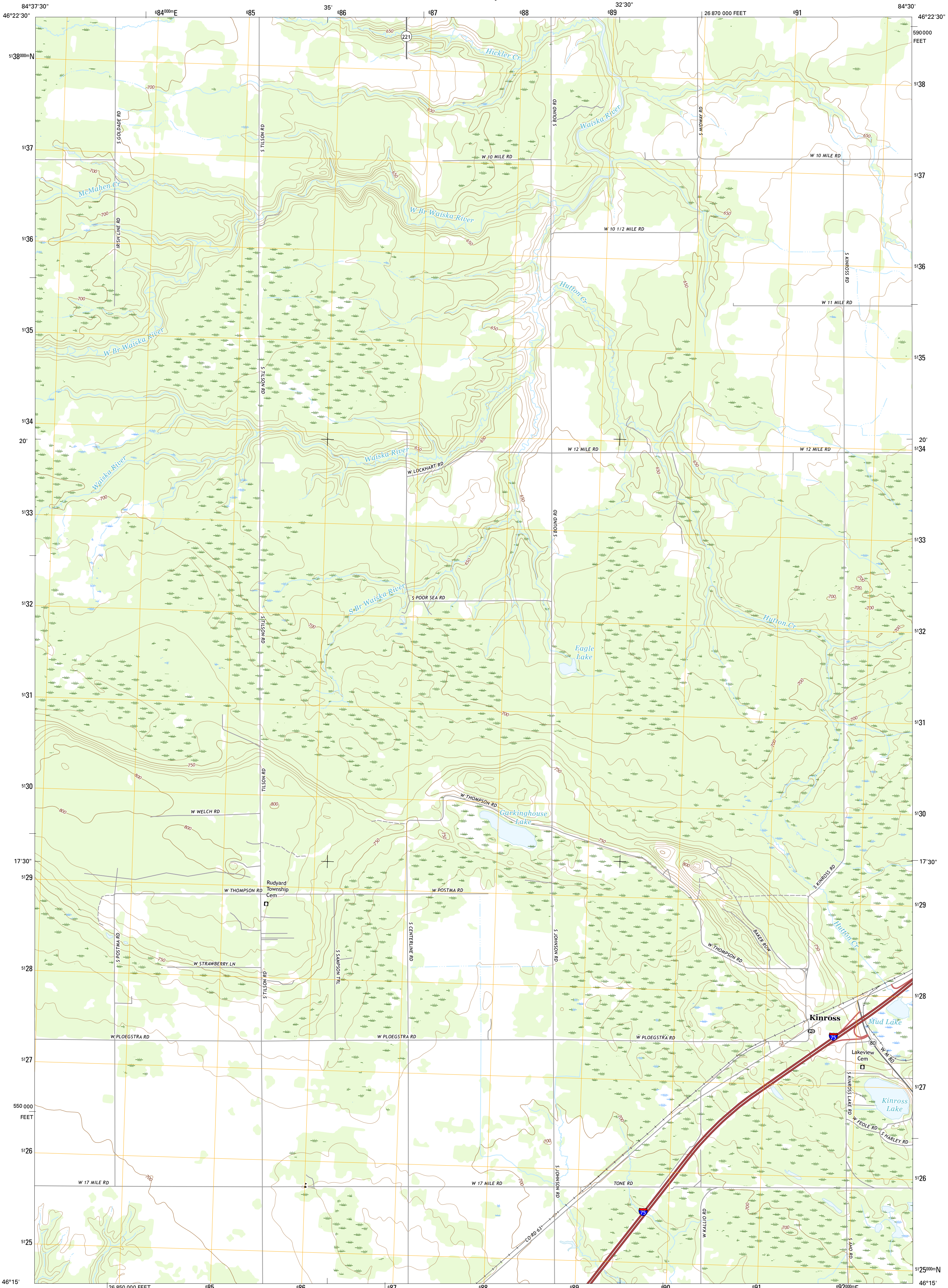




U.S. DEPARTMENT OF THE INTERIOR  
U.S. GEOLOGICAL SURVEY



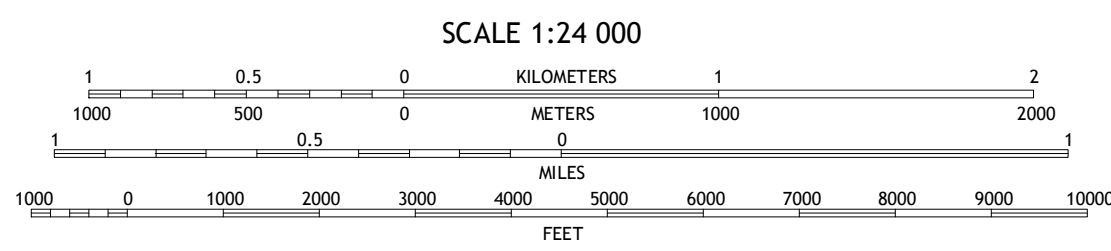
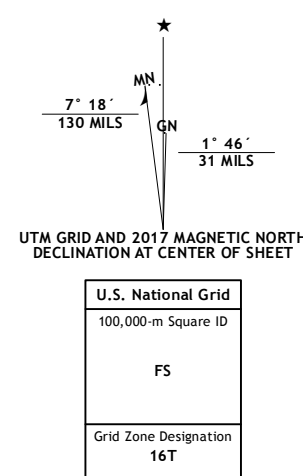
KINROSS QUADRANGLE  
MICHIGAN-CHIPPEWA CO.  
7.5-MINUTE SERIES



**Produced by the United States Geological Survey**  
North American Datum of 1983 (NAD83)  
World Geodetic System of 1984 (WGS84). Projection and 1000-meter grid: Universal Transverse Mercator, Zone 16T  
10 000-foot ticks: Michigan Coordinate System of 1983 (north zone)

This map is not a legal document. Boundaries may be generalized for this map scale. Private lands within government reservations may not be shown. Obtain permission before entering private lands.

Imagery.....NAIP, November 2014  
Roads.....U.S. Census Bureau, 2015 - 2016  
Names.....GNS, 2016  
Hydrography.....National Hydrography Dataset, 2014  
Contours.....National Elevation Dataset, 2009  
Boundaries.....Multiple sources; see metadata file 1972 - 2016  
Public Land Survey System.....BLM, 2016  
Wetlands.....FWS National Wetlands Inventory 1977 - 2014



QUADRANGLE LOCATION

**ROAD CLASSIFICATION**

Expressway	Local Connector
Secondary Hwy	Local Road
Ramp	4WD
Interstate Route	US Route
	State Route

1	2	3
4	5	6
7	8	

1 Dollar Settlement  
2 Brimley  
3 Shallows  
4 Back  
5 Duffer  
6 Fibre  
7 Rudyard  
8 Pickford NW

KINROSS, MI  
2017

