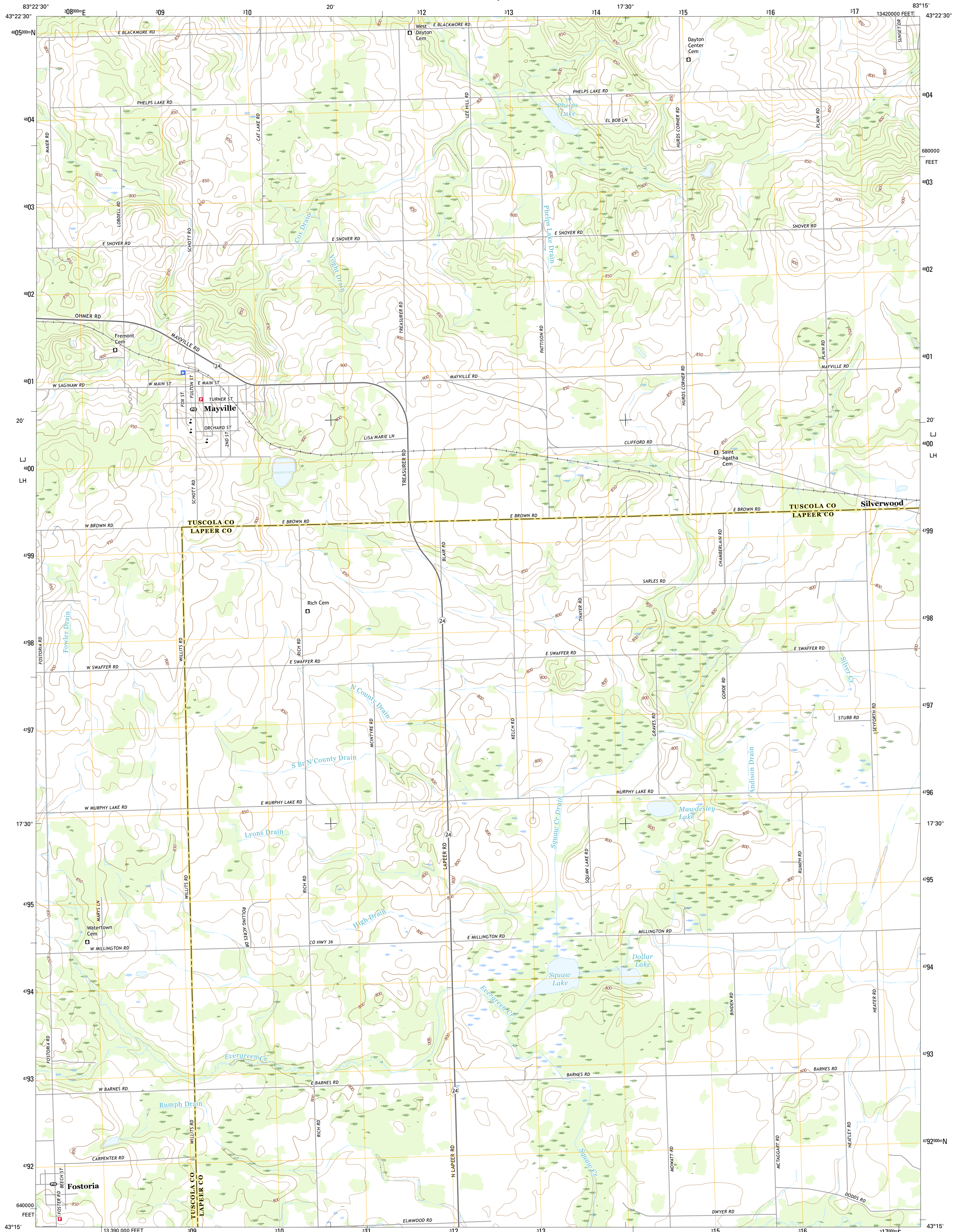




U.S. DEPARTMENT OF THE INTERIOR
U.S. GEOLOGICAL SURVEY



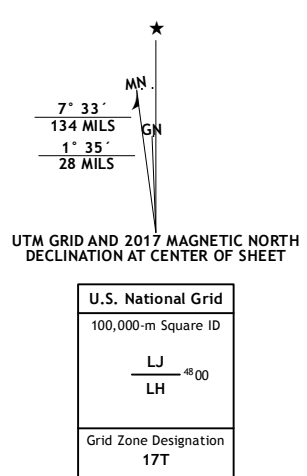
MAYVILLE QUADRANGLE
MICHIGAN
7.5-MINUTE SERIES



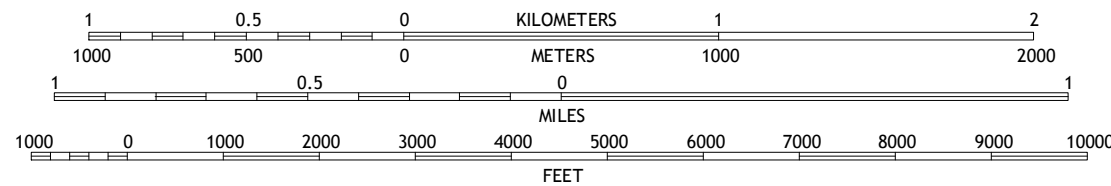
Produced by the United States Geological Survey
North American Datum of 1983 (NAD83)
World Geodetic System of 1984 (WGS84). Projection and
1 000-meter grid: Universal Transverse Mercator, Zone 17T
10 000-foot ticks: Michigan Coordinate System of 1983 (south
zone)

This map is not a legal document. Boundaries may be
generalized for this map scale. Private lands within government
reservations may not be shown. Obtain permission before
entering private lands.

Imagery:.....NAIP, October 2014
Roads:.....U.S. Census Bureau, 2015 - 2016
Names:.....GNS, 2016
Hydrography:.....National Hydrography Dataset, 2014
Contours:.....National Elevation Dataset, 1999
Boundaries:.....Multiple sources; see metadata file 1972 - 2016
Public Land Survey System:.....BLM, 2016
Wetlands:.....FWS National Wetlands Inventory 1977 - 2014



SCALE 1:24 000



CONTOUR INTERVAL 10 FEET
NORTH AMERICAN VERTICAL DATUM OF 1988

This map was produced to conform with the
National Geospatial Program US Topo Product Standard, 2011.
A metadata file associated with this product is draft version 0.6.19



QUADRANGLE LOCATION

ROAD CLASSIFICATION
Expressway: (thick red line)
Secondary Hwy: (red line)
Ramp: (red line with arrow)
Interstate Route: (red shield with blue border)
Local Connector: (thin red line)
Local Road: (red line)
AWD: (red line with cross-ticks)
US Route: (white shield with black border)
State Route: (white circle with black border)

1	2	3
4	5	6
7	8	

ADJOINING QUADRANGLES

MAYVILLE, MI
2017

