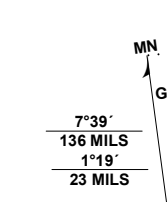


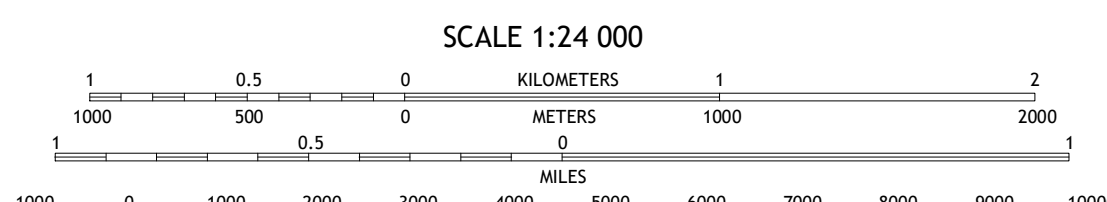
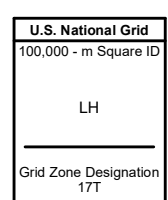
Produced by the United States Geological Survey

North American Datum of 1983 (NAD83) World Geodetic System of 1984 (WGS84) Projection and 1:250,000 scale Universal Transverse Mercator, Zone 17T. This map is not a legal document. Boundaries may be generalized for this map scale. Private lands within government reservations may not be shown. Obtain permission before entering private lands.

Imagery: N.A.I.P., June 2020; U.S. Census Bureau, 2016; GNS, 1980-2023; National Hydrography Dataset, 2006-2019; National Elevation Dataset, 2019; Multiple sources; see metadata file; 2021-2022; Public Land Survey System; BLM, 2018; Wetlands; FWS National Wetlands Inventory; Not Available



UTM GRID AND 2023 MAGNETIC NORTH DECLINATION AT CENTER OF SHEET



CONTOUR INTERVAL 5 FEET NORTH AMERICAN VERTICAL DATUM OF 1988

This map was produced to conform with the National Geospatial Program US Topo Product Standard.



QUADRANGLE LOCATION

Table with 3 columns and 3 rows showing adjacent quadrangles: 1 Utica, 2 Waldenburg, 3 New Haven, 4 Warren, 5 Mount Clemens East, 6 Highland Park, 7 Grosse Pointe, 8 Grosse Pointe OE

ROAD CLASSIFICATION table with symbols for Expressway, Secondary Hwy, Ramp, Interstate Route, Local Connector, Local Road, 4WD, US Route, and State Route.

