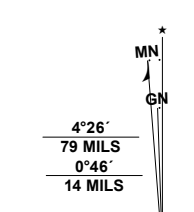


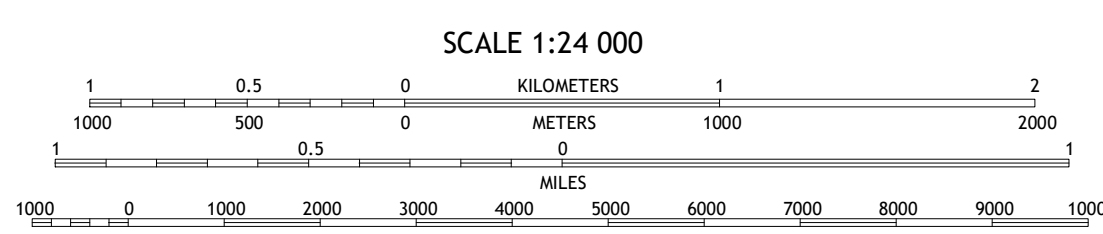
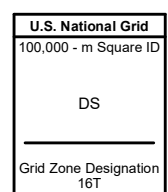
**Produced by the United States Geological Survey**

North American Datum of 1983 (NAD83)  
World Geodetic System of 1984 (WGS84), Projection and  
1 000-meter grid/Universal Transverse Mercator, Zone 16T  
This map is not a legal document. Boundaries may be  
generalized for this map scale. Private lands within government  
reservations may not be shown. Obtain permission before  
entering private lands.

Imagery.....NAIP, August 2016 - October 2016  
Roads.....U.S. Census Bureau, 2016  
Names.....GNS, 1980 - 2018  
Hydrography.....National Hydrography Dataset, 1989 - 2018  
Contours.....National Elevation Dataset, 1999 - 2017  
Boundaries.....Multiple sources; see metadata file, 2017 - 2018  
Public Land Survey System.....BLM, 2018  
Wetlands.....FWS National Wetlands Inventory, 2005



UTM GRID AND 2019 MAGNETIC NORTH  
DECLINATION AT CENTER OF SHEET



CONTOUR INTERVAL 20 FEET  
NORTH AMERICAN VERTICAL DATUM OF 1988

This map was produced to conform with the  
National Geospatial Program US Topo Product Standard, 2011.  
A metadata file associated with this product is draft version 0.6.18



QUADRANGLE LOCATION

1	2	3
4	5	6
7	8	

ADJOINING QUADRANGLES

- 1 Nelson Lake
- 2 Witch Lake NE
- 3 Republic
- 4 Hickman Lake
- 5 Republic SW
- 6 Klennan
- 7 Channing
- 8 Ralph NW

ROAD CLASSIFICATION	
	Expressway
	Secondary Hwy
	Ramp
	Interstate Route
	US Route
	State Route
	Local Connector
	Local Road
	4WD

