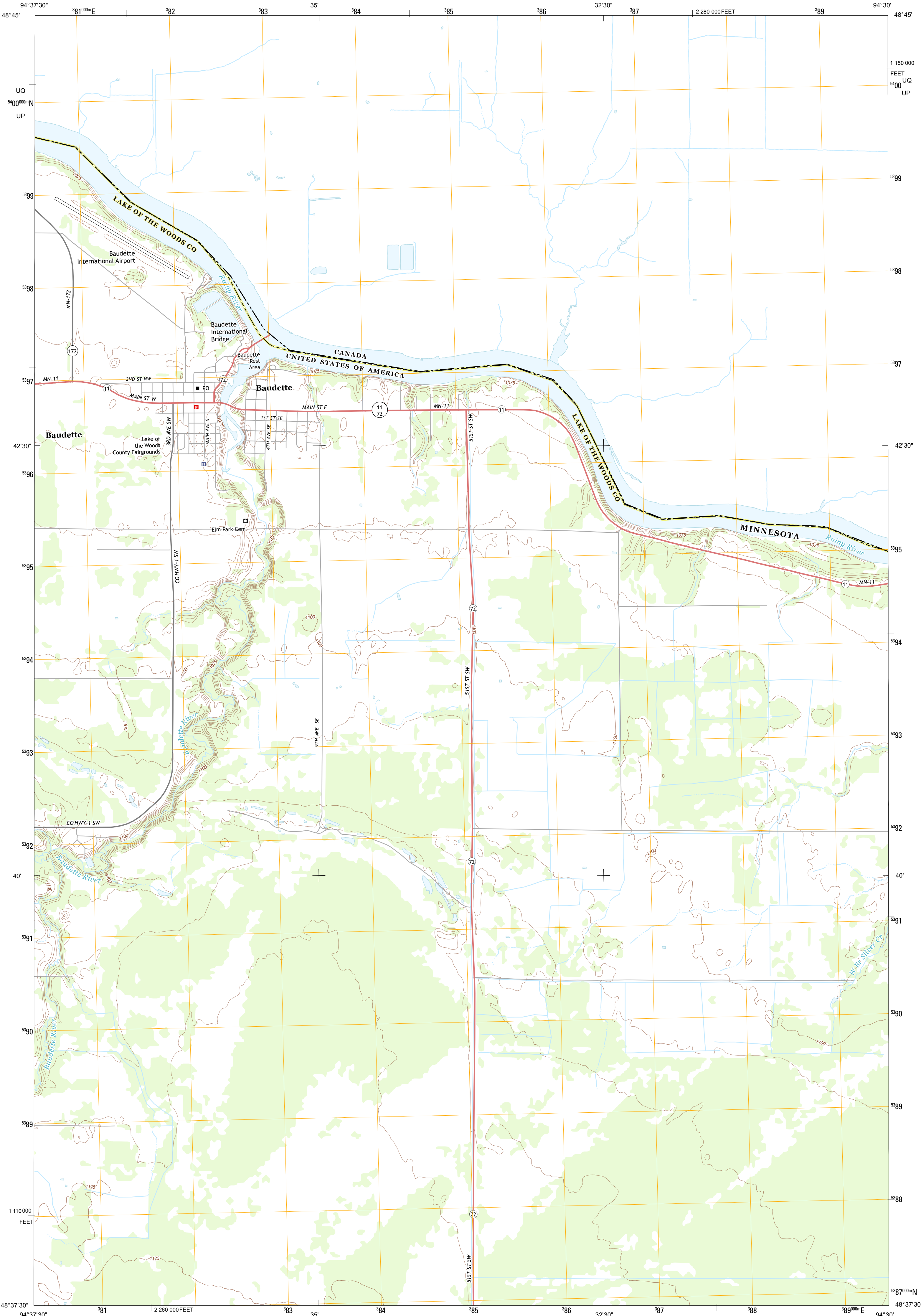




U.S. DEPARTMENT OF THE INTERIOR  
U. S. GEOLOGICAL SURVEY

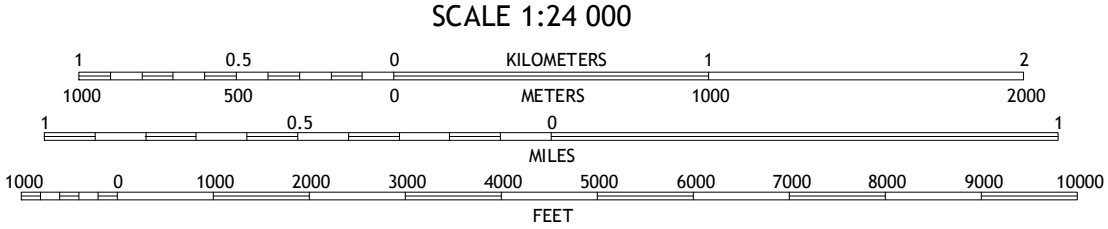
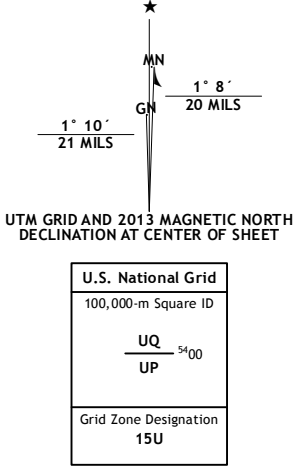


BAUDETTE QUADRANGLE  
MINNESOTA-ONTARIO  
7.5-MINUTE SERIES



Produced by the United States Geological Survey  
North American Datum of 1983 (NAD83)  
World Geodetic System of 1984 (WGS84). Projection and  
1 000-meter grid: Universal Transverse Mercator, Zone 15U  
10 000-foot ticks: Minnesota Coordinate System of 1983 (north  
zone)

Imagery.....NAIP, June 2010  
Roads.....G2006-2012 TomTom  
Names.....GNIS, 2013  
Hydrography.....National Hydrography Dataset, 2010  
Contours.....National Elevation Dataset, 2012  
Boundaries.....Census, IBWC, IBC, USGS, 1972 - 2012



CONTOUR INTERVAL 5 FEET  
NORTH AMERICAN VERTICAL DATUM OF 1988

This map was produced to conform with the  
National Geospatial Program US Topo Product Standard, 2011.  
A metadata file associated with this product is draft version 0.6.11



ROAD CLASSIFICATION

Expressway  
Secondary Hwy  
Ramp

Local Connector  
Local Road  
4WD  
US Route  
State Route

Wheeler Point	Pitt	Baudette	Clementson
Baudette SW	Baudette SE	Clementson SW	

ADJOINING 7.5' QUADRANGLES

BAUDETTE, MN-ON  
2013