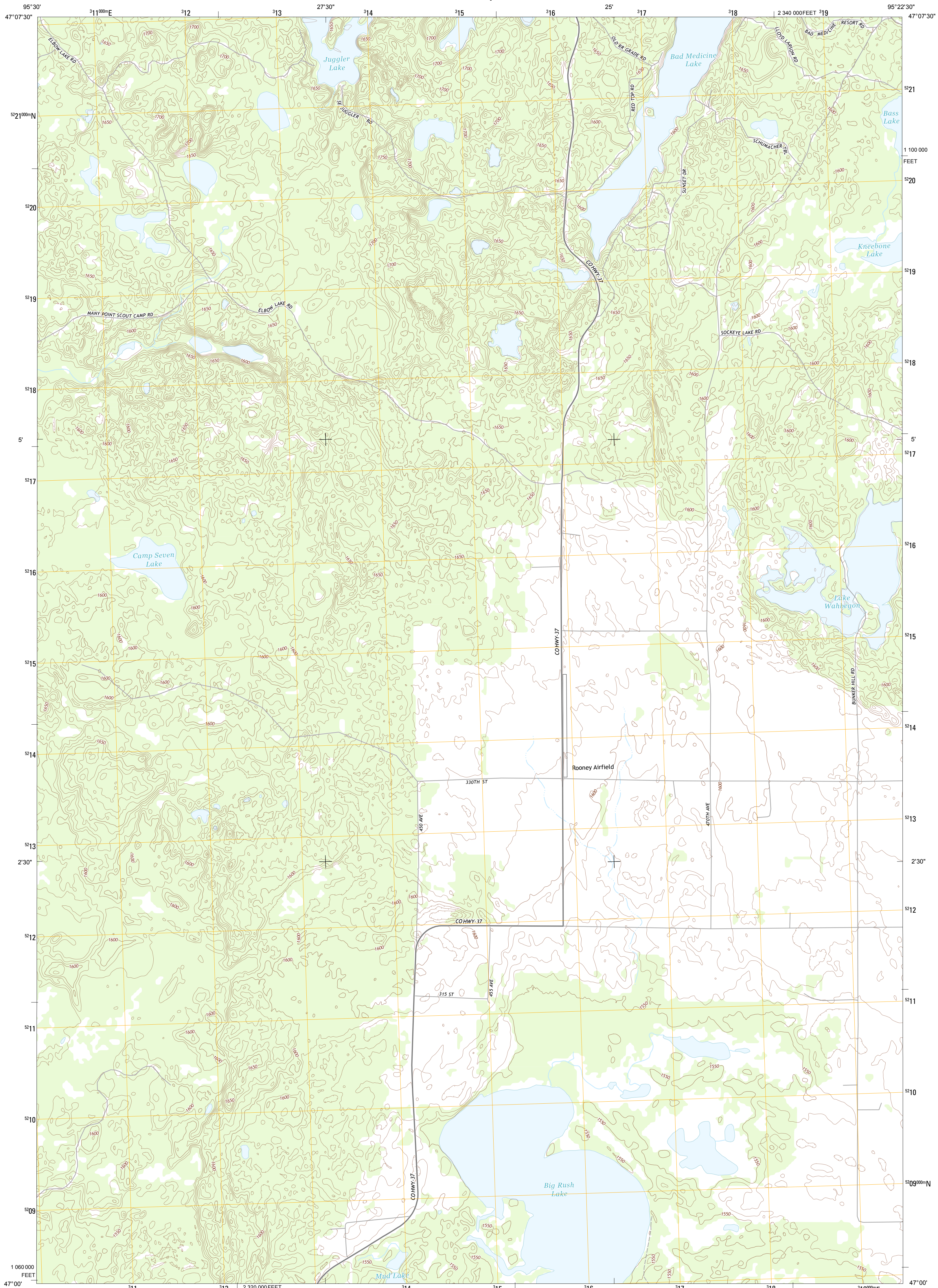




U.S. DEPARTMENT OF THE INTERIOR
U. S. GEOLOGICAL SURVEY

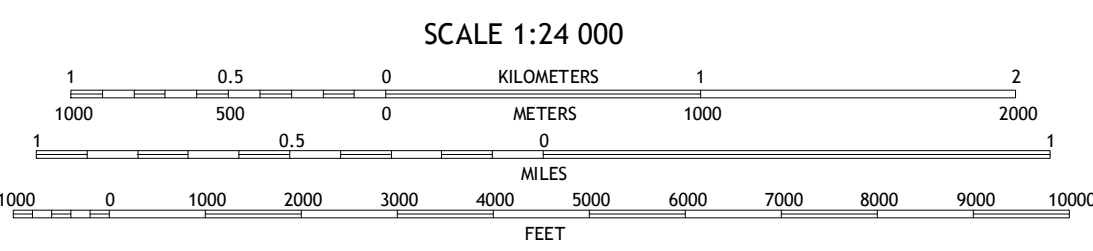
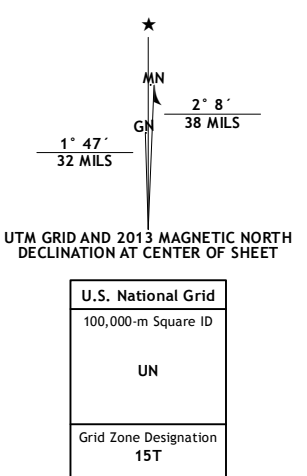


BIG RUSH LAKE QUADRANGLE
MINNESOTA-BECKER CO.
7.5-MINUTE SERIES



Produced by the United States Geological Survey
North American Datum of 1983 (NAD83)
World Geodetic System of 1984 (WGS84). Projection and
1 000-meter grid: Universal Transverse Mercator, Zone 15T
10 000-foot ticks: Minnesota Coordinate System of 1983 (central
zone)

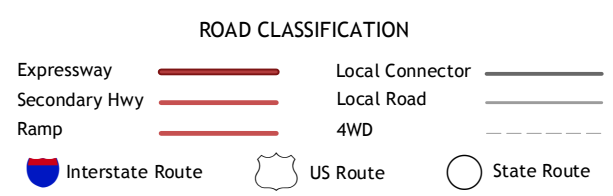
Imagery.....NAIP, June 2010
Roads.....©2006-2012 TomTom
Names.....GNIS, 2013
Hydrography.....National Hydrography Dataset, 2010
Contours.....National Elevation Dataset, 2012
Boundaries.....Census, IBWC, IBC, USGS, 1972 - 2012



QUADRANGLE LOCATION

Tilabiy Lake	Long Lost Lake	Anchor Hill
Many Point Lake	Big Rush Lake	Big Basswood Lake
Height of Land Lake	Ponoford	Osage

ADJOINING 7.5 QUADRANGLES



BIG RUSH LAKE, MN
2013