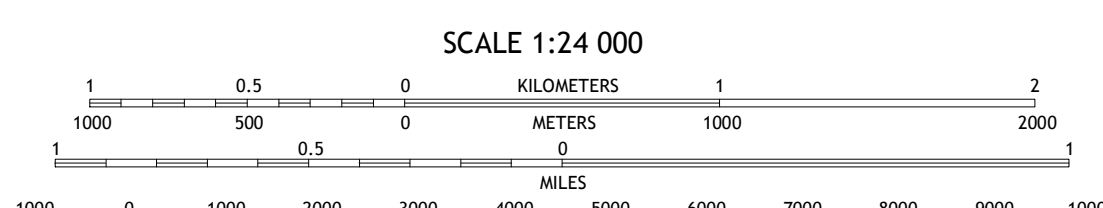
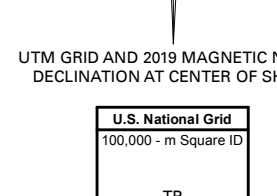
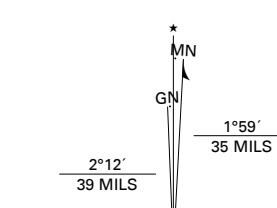


Produced by the United States Geological Survey

North American Datum of 1983 (NAD83)
World Geodetic System of 1984 (WGS84), Projection and
1 000-meter grid/Universal Transverse Mercator, Zone 14U15U
This map is not a legal document. Boundaries may be
generalized for this map scale. Private lands within government
reservations may not be shown. Obtain permission before
entering private lands.

Imagery.....NAIP, July 2017 - November 2017
Roads.....U.S. Census Bureau, 2016
Names.....GNIS, 2007 - 2018
Hydrography.....National Hydrography Dataset, 2004 - 2018
Contours.....National Elevation Dataset, 2012
Boundaries.....Multiple sources; metadata file, 2018
Public Land Survey System.....BLM, 2017
Wetlands.....FWS National Wetlands Inventory 1982 - 1983



CONTOUR INTERVAL 5 FEET
NORTH AMERICAN DATUM OF 1988
This map was produced to conform with the
National Geospatial Program US Topo Product Standard, 2011.
A metadata file associated with this product is draft version 0.6.18



QUADRANGLE LOCATION

1	2	3
4	5	6
7	8	9

- 1 Greenbush SE
- 2 Thief Lake SE
- 3 Thief Lake NE
- 4 Middle River NE
- 5 Gatzke
- 6 Middle River SE
- 7 Gatzke SW
- 8 Gatzke SE

ROAD CLASSIFICATION	
	Expressway
	Secondary Hwy
	Ramp
	Interstate Route
	Local Connector
	Local Road
	4WD
	US Route
	State Route

GATZKE NW, MN

2019



NSN 7164-301-637-2462
NGA REF. NO. USGSX24K16977