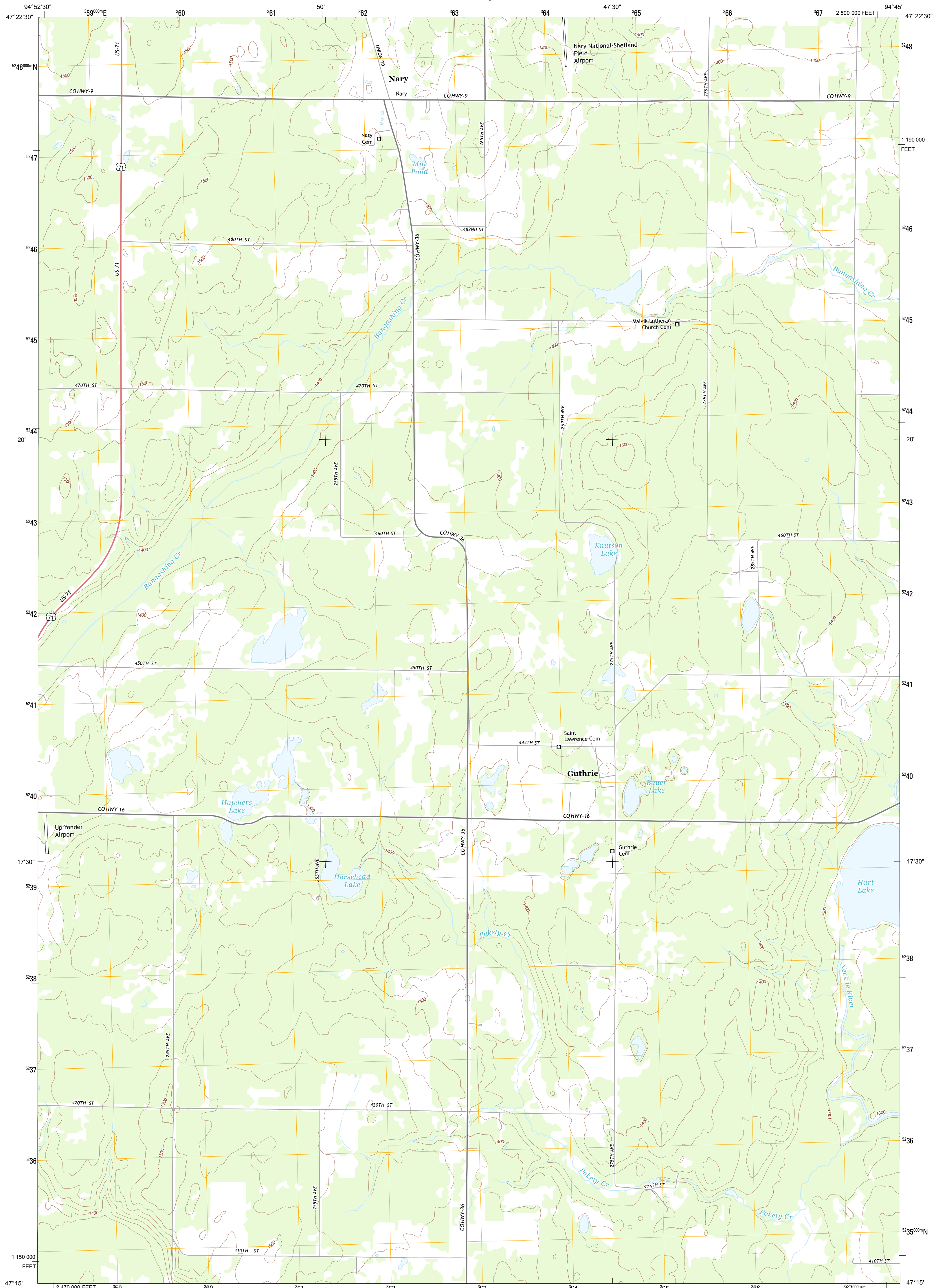




U.S. DEPARTMENT OF THE INTERIOR  
U. S. GEOLOGICAL SURVEY

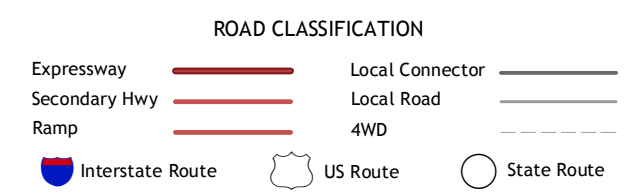
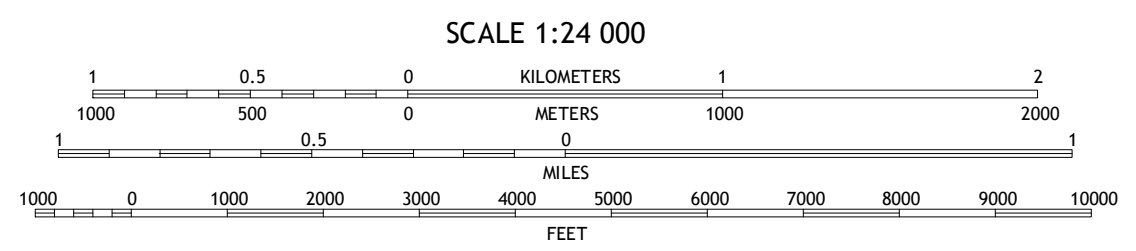
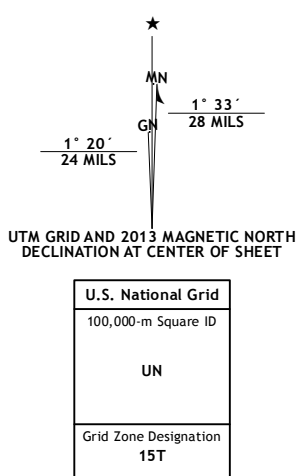


GUTHRIE QUADRANGLE  
MINNESOTA-HUBBARD CO.  
7.5-MINUTE SERIES



Produced by the United States Geological Survey  
North American Datum of 1983 (NAD83)  
World Geodetic System of 1984 (WGS84). Projection and  
1000-meter grid: Universal Transverse Mercator, Zone 15T  
10 000-foot ticks: Minnesota Coordinate System of 1983 (central zone)

Imagery.....NAP, July 2010 - August 2010  
Roads.....©2006-2012 TomTom  
Names.....GNIS, 2013  
Hydrography.....National Hydrography Dataset, 2010  
Contours.....National Elevation Dataset, 1999  
Boundaries.....Census, IBWC, IBC, USGS, 1972 - 2012



Bemidji West	Bemidji East	Andrus Lake
Frontenac Lake	Guthrie	Steamboat Lake
Lake George	Laporte	Benedict

GUTHRIE, MN  
2013

ADJOINING 7.5' QUADRANGLES