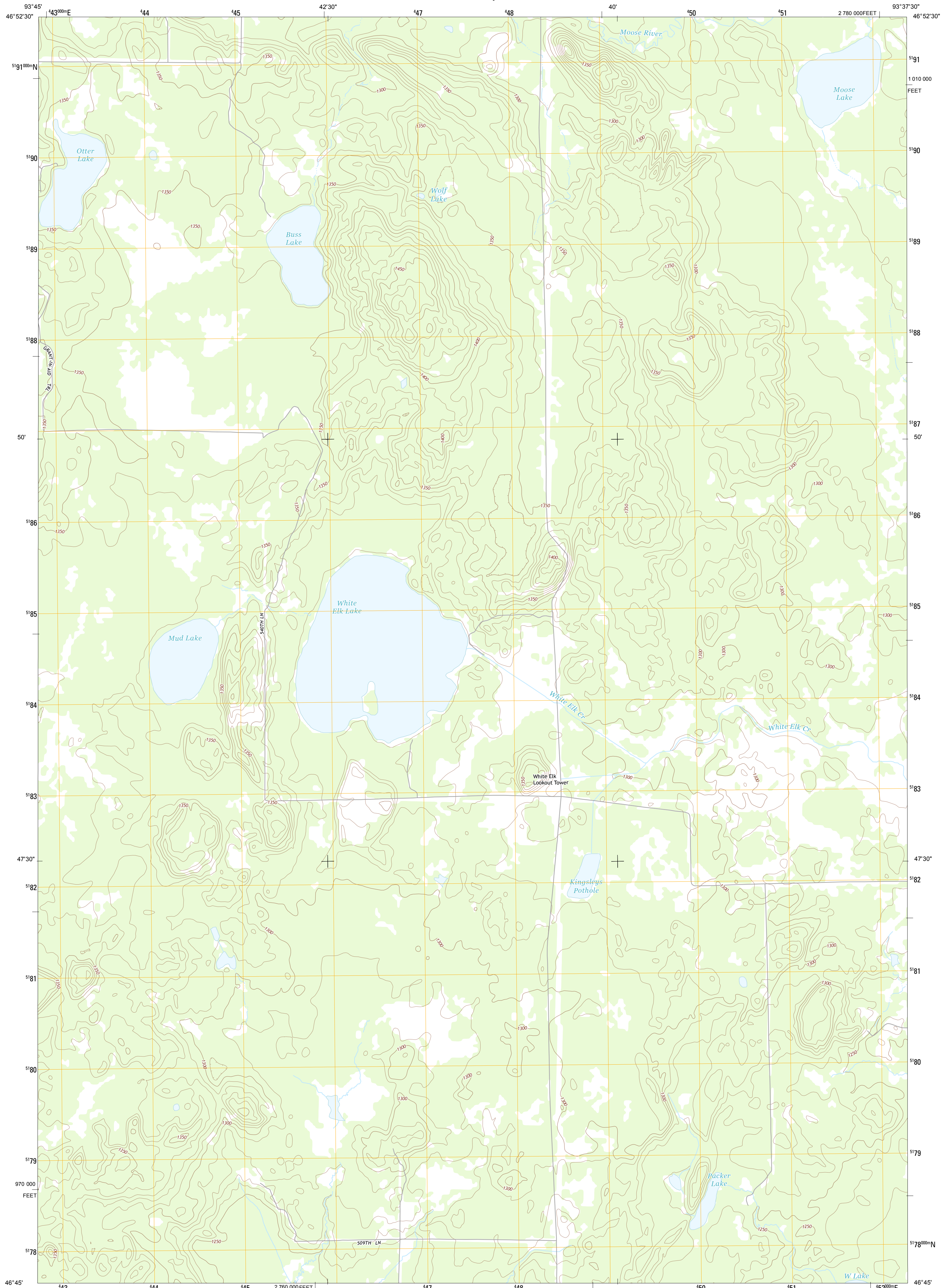




U.S. DEPARTMENT OF THE INTERIOR  
U. S. GEOLOGICAL SURVEY

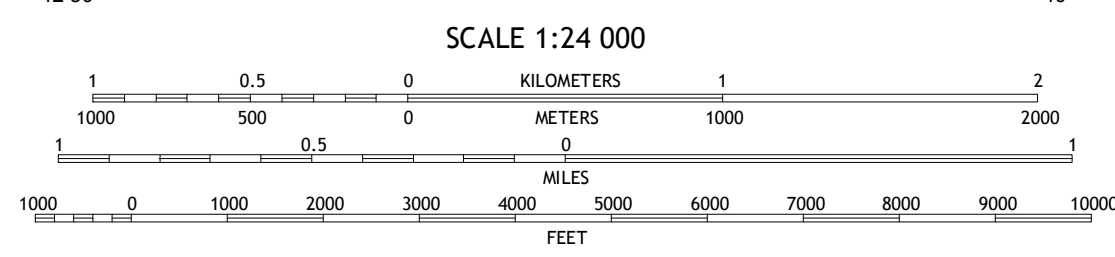
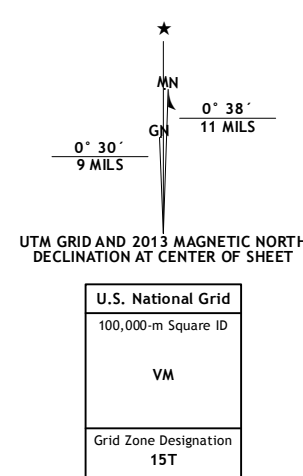


WHITE ELK LAKE QUADRANGLE  
MINNESOTA-AITKIN CO.  
7.5-MINUTE SERIES



Produced by the United States Geological Survey  
North American Datum of 1983 (NAD83)  
World Geodetic System of 1984 (WGS84). Projection and  
1 000-meter grid: Universal Transverse Mercator, Zone 15T  
10 000-foot ticks: Minnesota Coordinate System of 1983 (central zone)

Imagery.....NAIP, September 2010  
Roads.....©2006-2012 TomTom  
Names.....GNIS, 2013  
Hydrography.....National Hydrography Dataset, 2010  
Contours.....National Elevation Dataset, 1999  
Boundaries.....Census, IBWC, IBC, USGS, 1972 - 2012

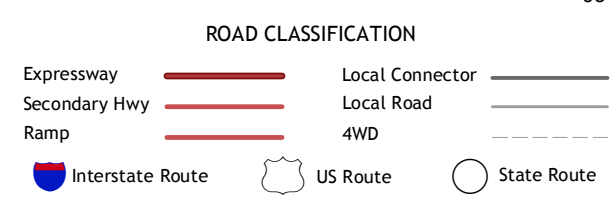


CONTOUR INTERVAL 10 FEET  
NORTH AMERICAN VERTICAL DATUM OF 1988  
This map was produced to conform with the  
National Geospatial Program US Topo Product Standard, 2011.  
A metadata file associated with this product is draft version 0.6.11



QUADRANGLE LOCATION

|             |                 |           |
|-------------|-----------------|-----------|
| Shovel Lake | Swatara         | Hill City |
| Edna Lake   | White Elk Lake  | Bain      |
| Ross Lake   | Esquagamah Lake | Waukenabo |



WHITE ELK LAKE, MN  
2013

ADJOINING 7.5 QUADRANGLES