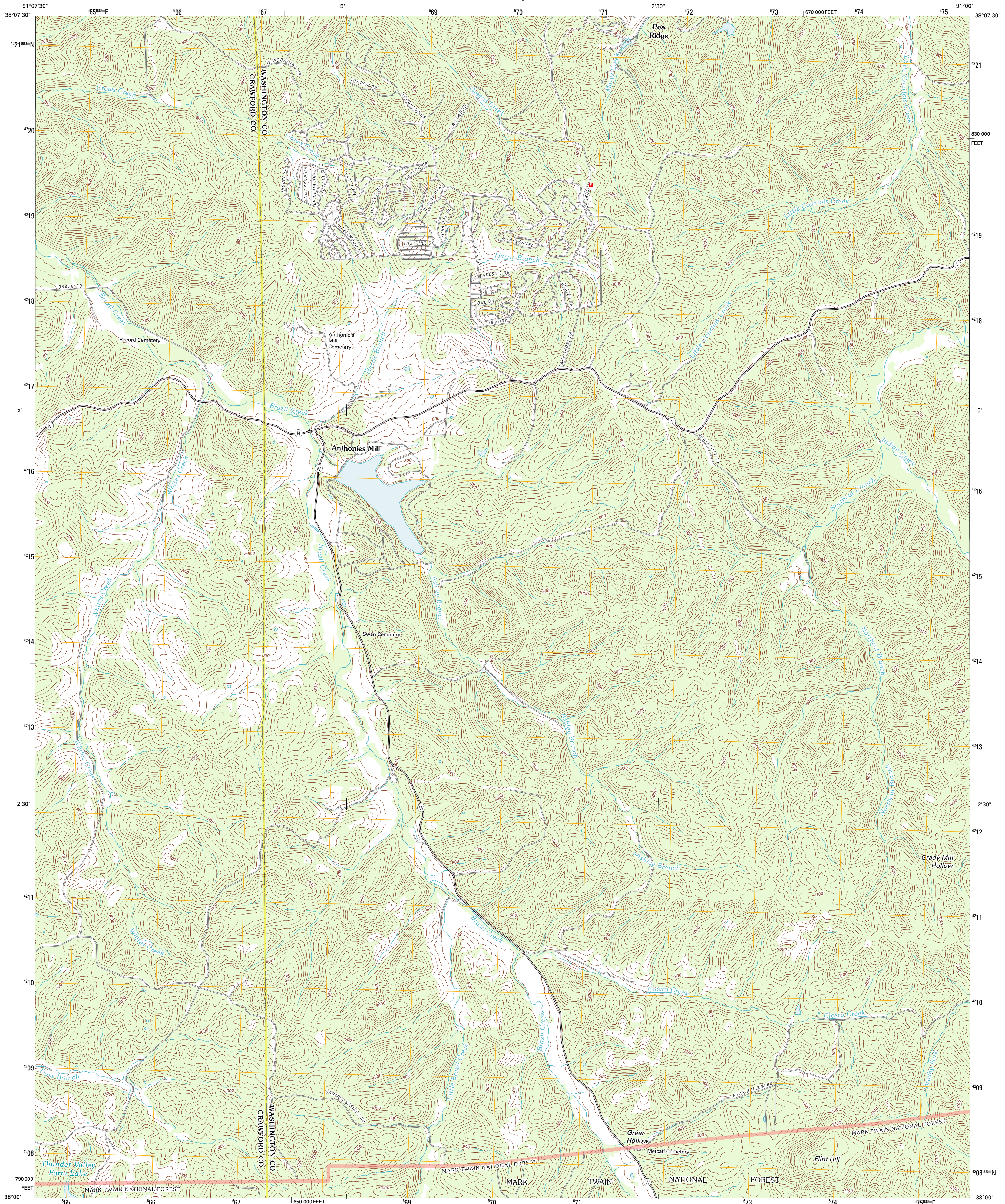




U.S. DEPARTMENT OF THE INTERIOR  
U. S. GEOLOGICAL SURVEY

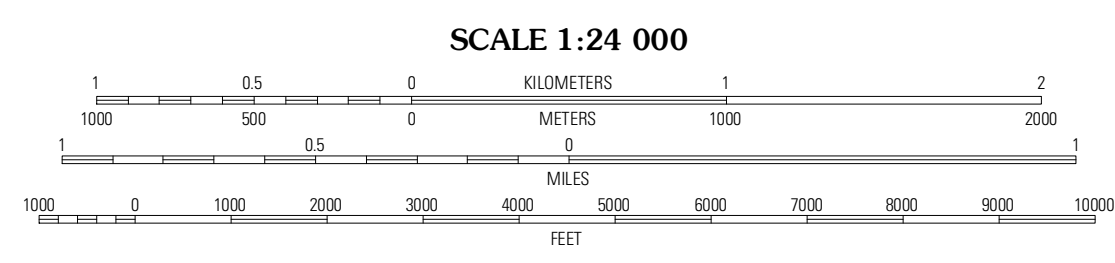
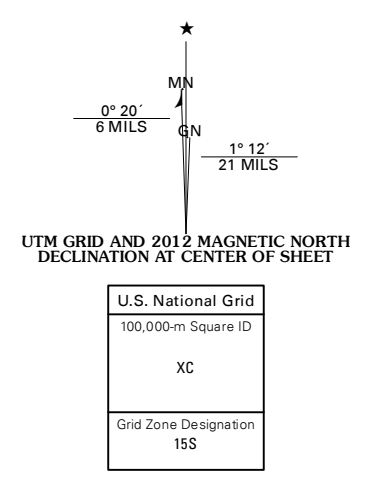


ANTHONIES MILL QUADRANGLE  
MISSOURI  
7.5-MINUTE SERIES



Produced by the United States Geological Survey  
North American Datum of 1983 (NAD83)  
World Geodetic System of 1984 (WGS84) Projection and  
1 000-meter grid: Universal Transverse Mercator, Zone 15S  
10 000-foot ticks: Missouri Coordinate System of 1983 (east zone)

Imagery.....NAIP, June 2010  
Roads.....©2006-2011 TomTom  
Roads within US Forest Service Lands.....FS Topo Data  
with limited Forest Service updates, 2009  
Names.....GNIS, 2011  
Hydrography.....National Hydrography Dataset, 2010  
Contours.....National Elevation Dataset, 2006  
Boundaries.....Census, IBWC, IBC, USGS, 1972 - 2010



CONTOUR INTERVAL 20 FEET  
NORTH AMERICAN VERTICAL DATUM OF 1988

This map was produced to conform with the  
National Geospatial Program US Topo Product Standard, 2011.  
A metadata file associated with this product is draft version 0.6.1



QUADRANGLE LOCATION

Sullivan	Meramec State Park	Cyclops Hollow
Onondaga Cave	Anthony's Mill	Ebo
Huzzah	Berryman	Shirley

ADJOINING 7.5 QUADRANGLES

**ROAD CLASSIFICATION**

- Interstate Route
- US Route
- Ramp
- State Route
- Local Road
- 4WD
- FS Primary Route
- FS Passenger Route
- FS High Clearance Route
- State Route
- FS High Clearance Route

Check with local Forest Service unit for current travel conditions and restrictions.

ANTHONIES MILL, MO  
2012