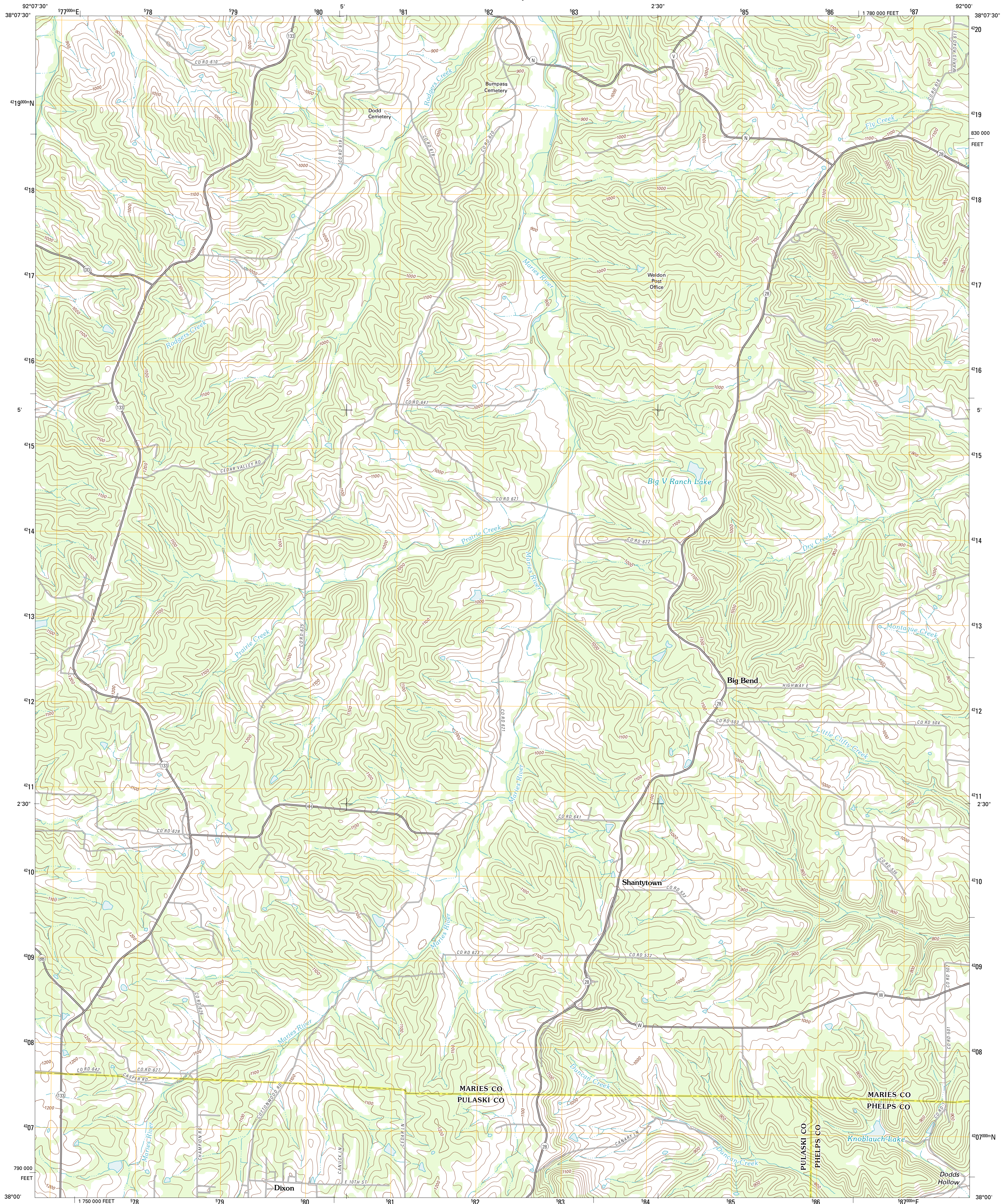




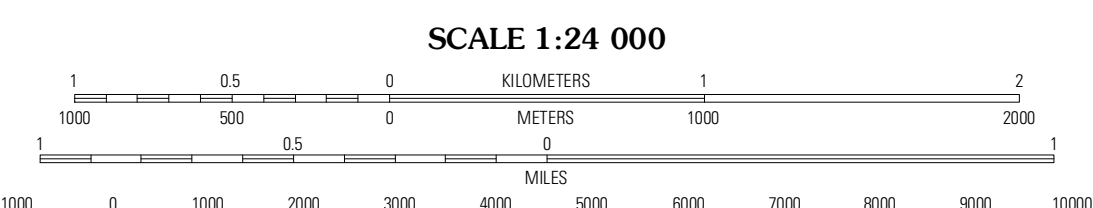
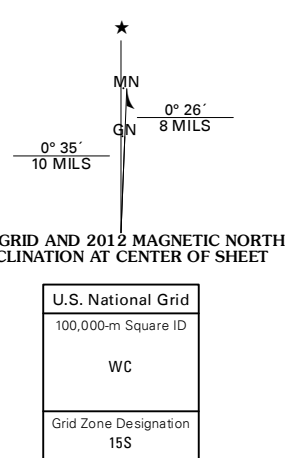
U.S. DEPARTMENT OF THE INTERIOR
U. S. GEOLOGICAL SURVEY



BIG BEND QUADRANGLE
MISSOURI
7.5-MINUTE SERIES



Produced by the United States Geological Survey
North American Datum of 1983 (NAD83)
World Geodetic System of 1984 (WGS84) Projection and
1 000-foot ticks: Missouri Coordinate System of 1983
(central zone)



CONTOUR INTERVAL 20 FEET
NORTH AMERICAN VERTICAL DATUM OF 1988

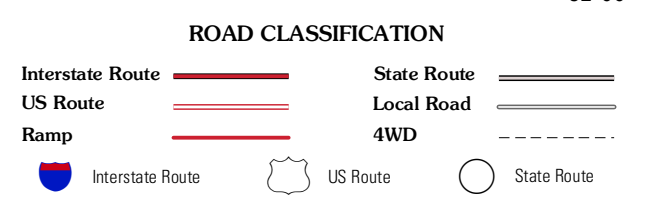
This map was produced to conform with the
National Geospatial Program US Topo Product Standard, 2011.
A metadata file associated with this product is draft version 0.6.1



QUADRANGLE LOCATION

Van Cleve	Brinktown	Vienna
Brays	Big Bend	Nagomni Lodge
Hancock	Dixon	Newburg

ADJOINING 7.5' QUADRANGLES



BIG BEND, MO
2012