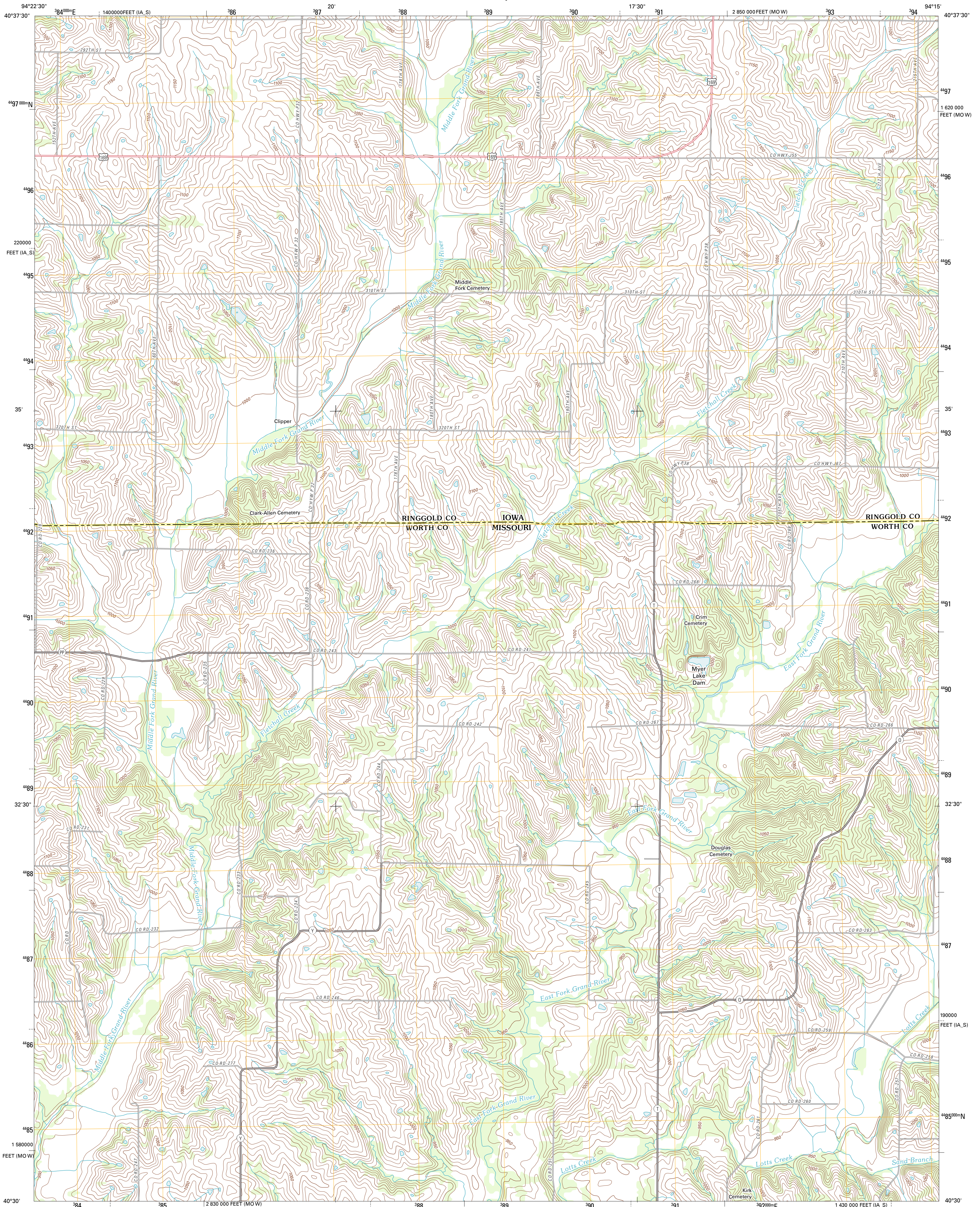




U.S. DEPARTMENT OF THE INTERIOR  
U. S. GEOLOGICAL SURVEY

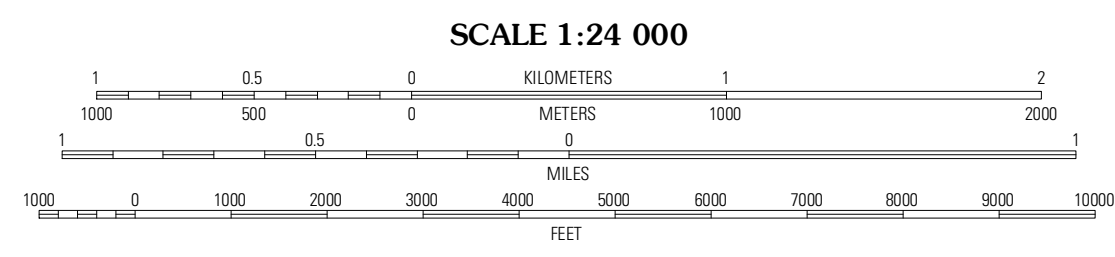
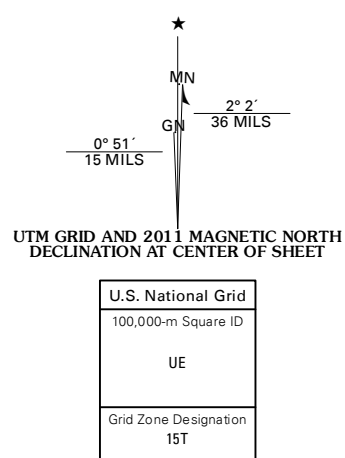


**BLOCKTON SE QUADRANGLE**  
MISSOURI-IOWA  
7.5-MINUTE SERIES

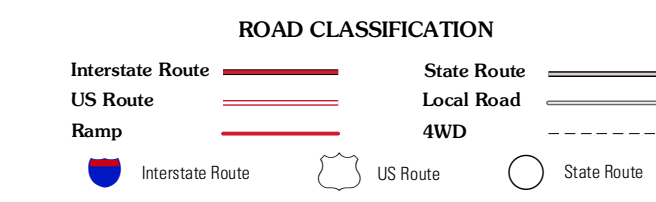
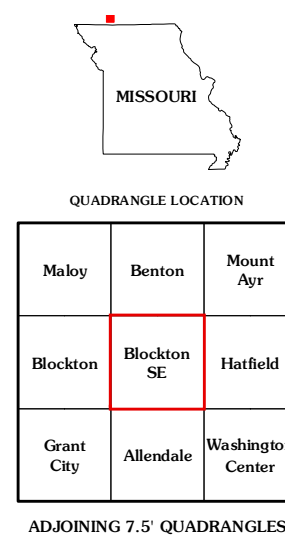


Produced by the United States Geological Survey  
North American Datum of 1983 (NAD83)  
World Geodetic System of 1984 (WGS84) Projection and  
1 000-meter grid; Universal Transverse Mercator, Zone 15T  
10 000-foot ticks; Missouri Coordinate System of 1983 (west zone), Iowa Coordinate System of 1983 (south zone)

Imagery: N.A.P., June 2010  
Roads: ©2006-2011, TomTom  
Names: GNS, 2011  
Hydrography: National Hydrography Dataset, 2010  
Contours: National Elevation Dataset, 2005  
Boundaries: Census, IBWC, IBC, USGS, 1972 - 2010



CONTOUR INTERVAL 10 FEET  
NORTH AMERICAN VERTICAL DATUM OF 1988  
This map was produced to conform with the National Geospatial Program US Topo Product Standard, 2011. A metadata file associated with this product is draft version 0.6.1



QUADRANGLE LOCATION

Makey	Benton	Mount Ayr
Blockton	Blockton SE	Harfield
Grant City	Allendale	Washington Center

ADJOINING 7.5' QUADRANGLES

**BLOCKTON SE, MO-IA**  
2011