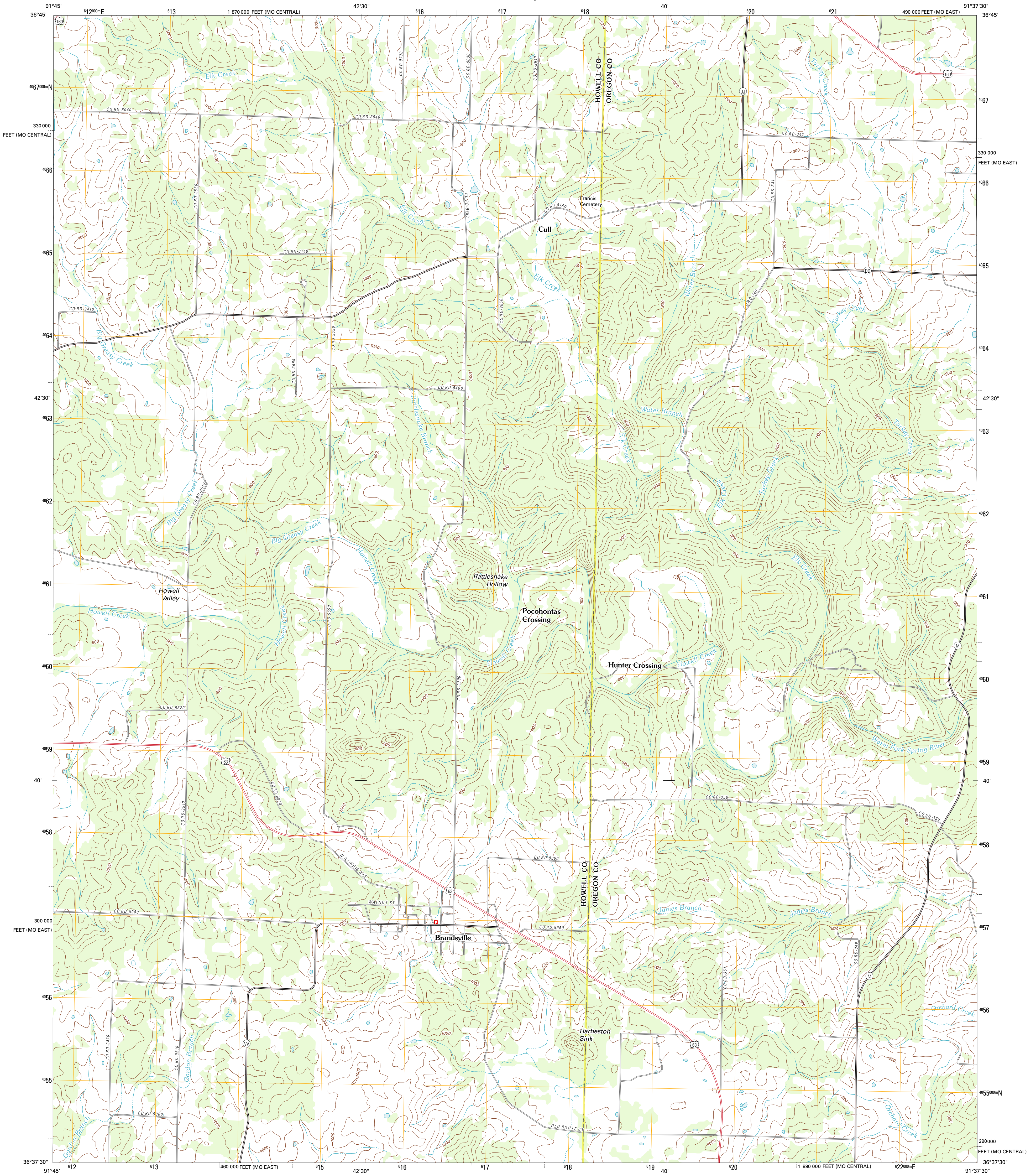




U.S. DEPARTMENT OF THE INTERIOR  
U. S. GEOLOGICAL SURVEY

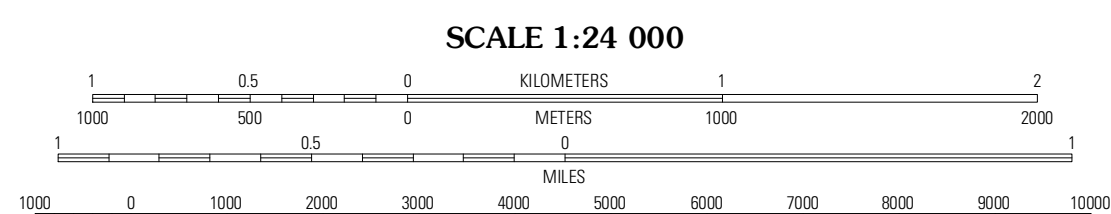
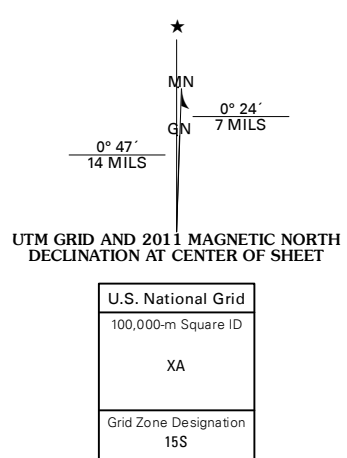


BRANDSVILLE QUADRANGLE  
MISSOURI  
7.5-MINUTE SERIES



Produced by the United States Geological Survey  
North American Datum of 1983 (NAD83)  
World Geodetic System of 1984 (WGS84) Projection and  
1 000-foot grid; Universal Transverse Mercator, Zone 15S  
10 000-foot ticks; Missouri Coordinate System of 1983  
(central and east zones)

Imagery.....NAP, July 2010  
Roads.....©2006-2011 TomTom  
Names.....GNIS, 2011  
Hydrography.....National Hydrography Dataset, 2010  
Contours.....National Elevation Dataset, 2006  
Boundaries.....Census, IBWC, IBC, USGS, 1972 - 2010



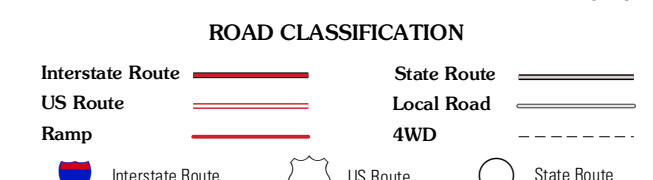
CONTOUR INTERVAL 20 FEET  
NORTH AMERICAN VERTICAL DATUM OF 1988  
This map was produced to conform with the  
National Geospatial Program US Topo Product Standard, 2011.  
A metadata file associated with this product is draft version 0.6.1



QUADRANGLE LOCATION

White Church	Peace Valley	Thomasville
West Plains	<b>Brandsville</b>	Rover
Lanton	Koshkonong	Thayer

ADJOINING 7.5' QUADRANGLES



BRANDSVILLE, MO  
2011