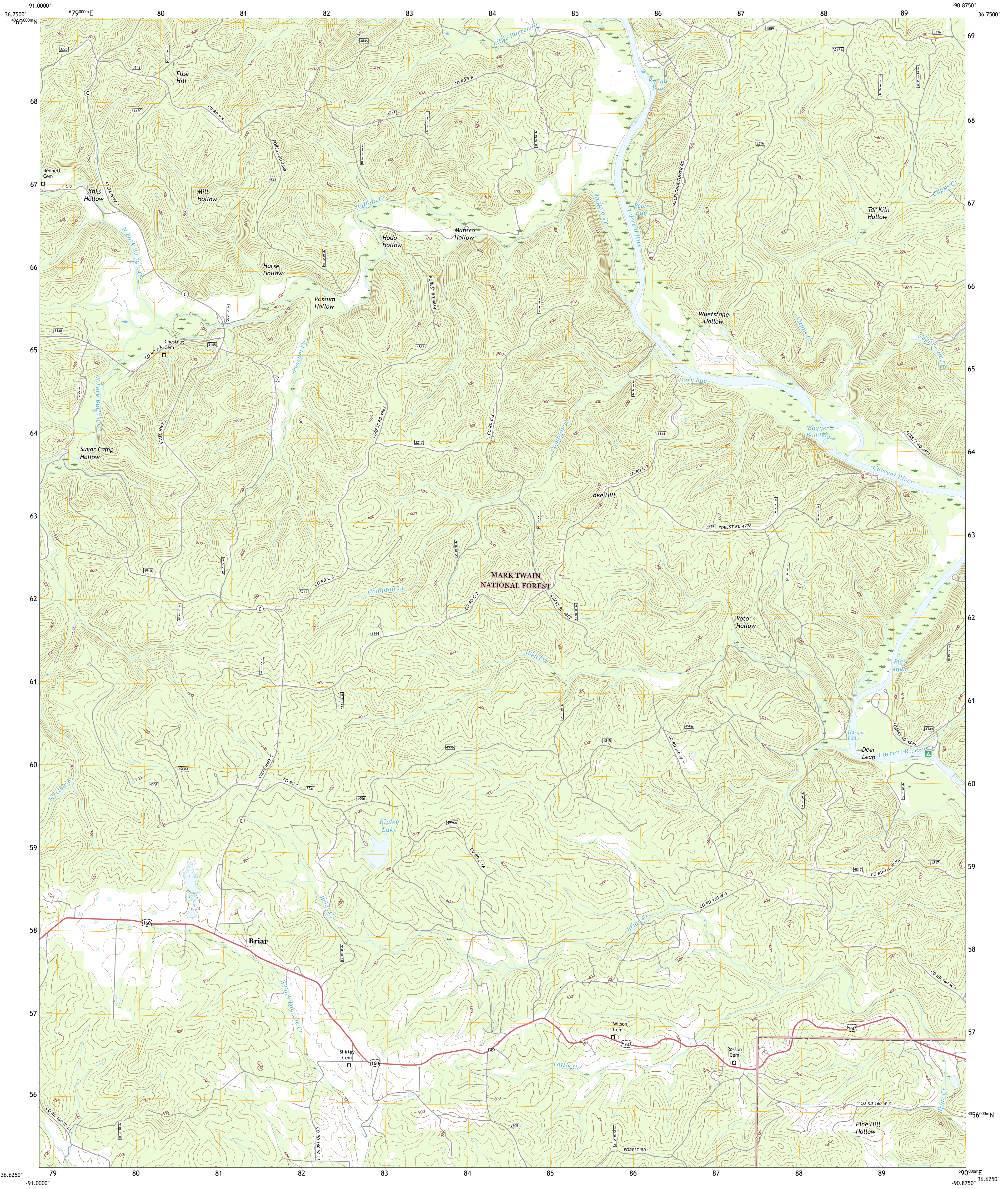




U.S. DEPARTMENT OF THE INTERIOR
U.S. GEOLOGICAL SURVEY

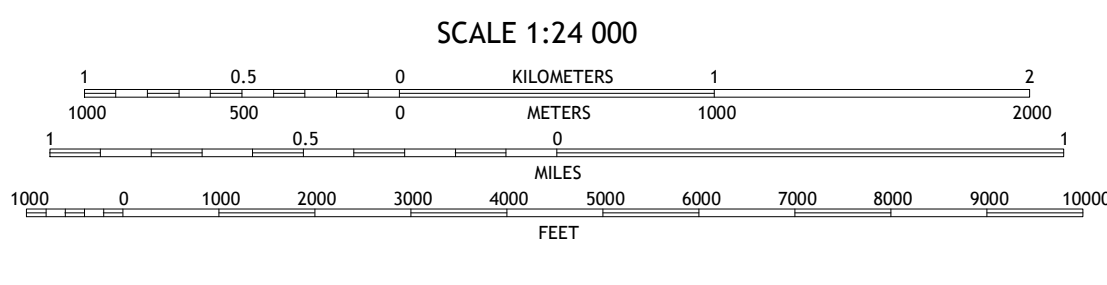
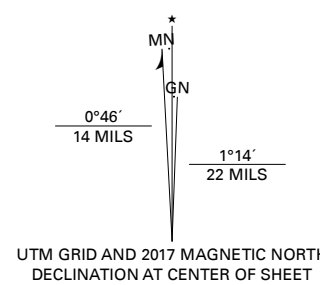


BRIAR QUADRANGLE
MISSOURI - RIPLEY COUNTY
7.5-MINUTE SERIES



Produced by the United States Geological Survey
North American Datum of 1983 (NAD83)
World Geodetic System of 1984 (WGS84) - Projection and 1000-meter grid/Universal Transverse Mercator, Zone 15S
This map is not a legal document. Boundaries may be generalized for this map scale. Private lands within government reservations may not be shown. Obtain permission before entering private lands.

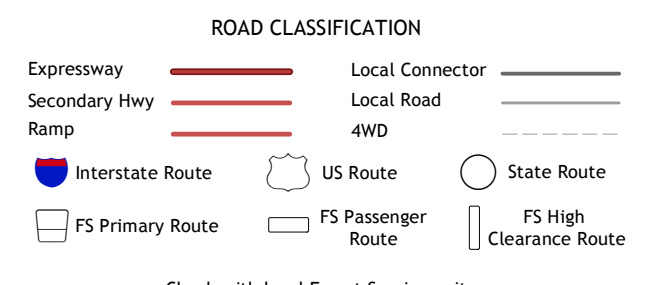
Imagery.....N.AIP, June 2016 - October 2016
Roads.....U.S. Census Bureau, 2016
Roads within US Forest Service Lands.....FSTopo Data with limited Forest Service updates, 2014 - 2017
Names.....GNIS, 1980 - 2016
Hydrography.....National Hydrography Dataset, 2001 - 2016
Contours.....National Elevation Dataset, 2001 - 2016
Boundaries.....Multiple sources; see metadata file
Public Land Survey System.....BLM, 2017
Wetlands.....FWS National Wetlands Inventory 1983 - 1985



ADJOINING QUADRANGLES

1	2	3
4	5	6
7	8	

1 Handy
2 Grandin SW
3 Grandin
4 Bardley
5 Doniphan North
6 Gatewood
7 Poyner
8 Doniphan South



Check with local Forest Service unit for current travel conditions and restrictions.

BRIAR, MO
2017

