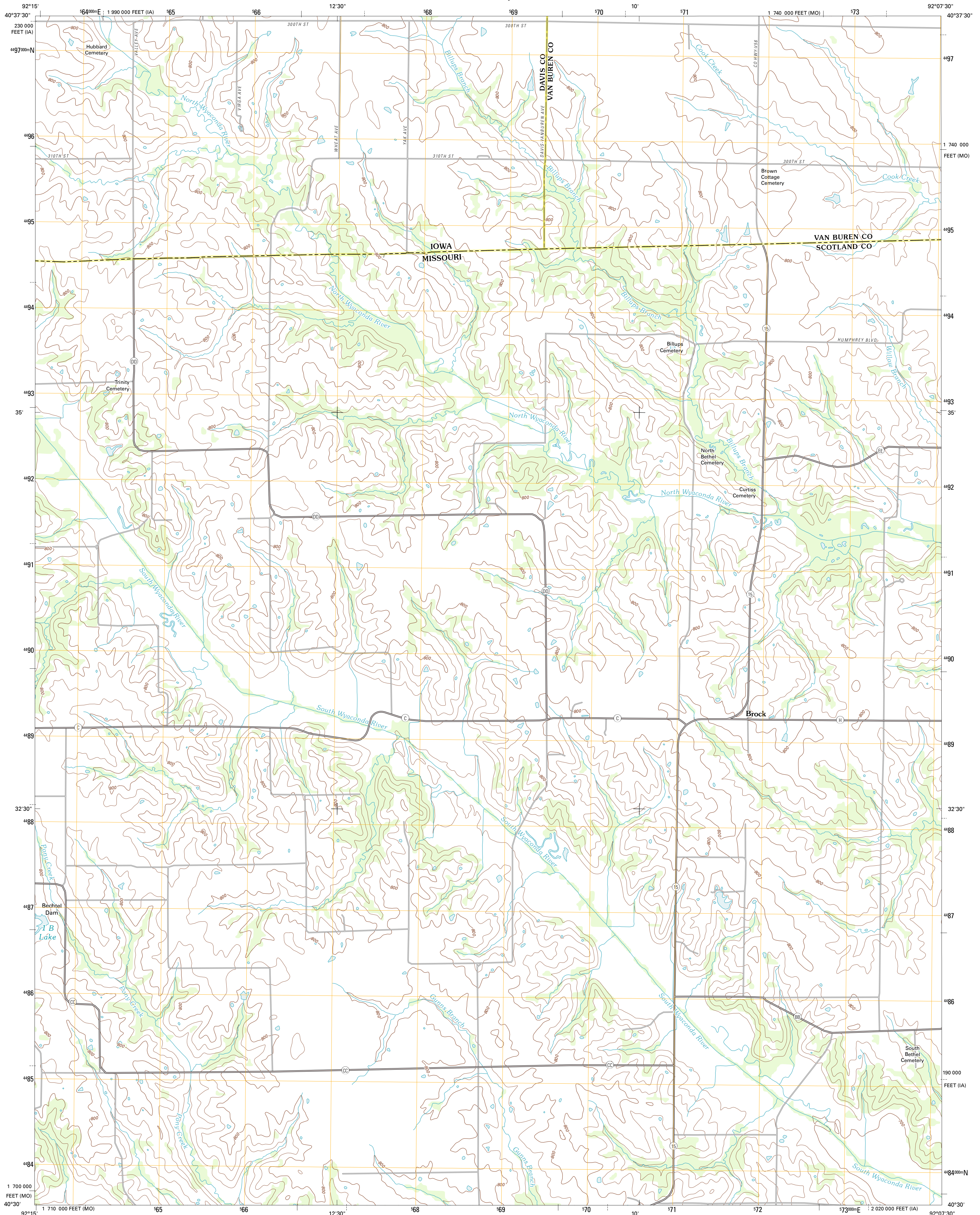




U.S. DEPARTMENT OF THE INTERIOR  
U. S. GEOLOGICAL SURVEY

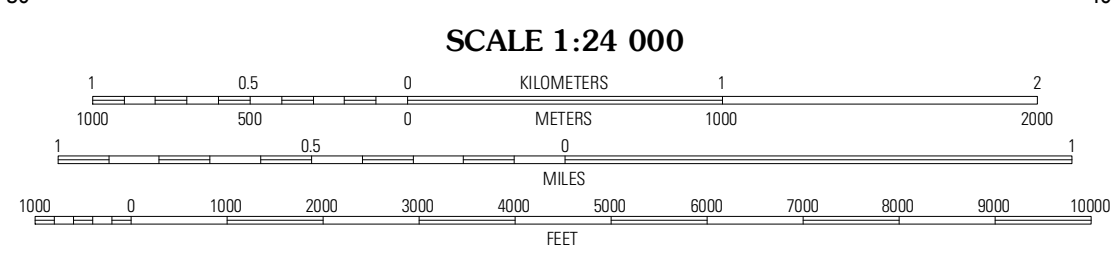
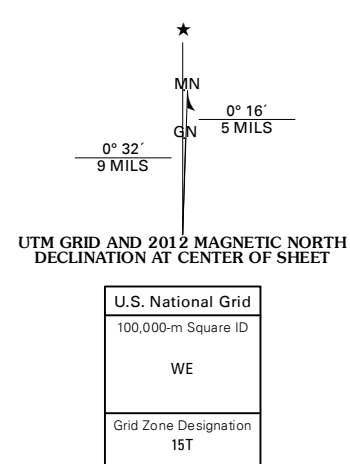


BROCK QUADRANGLE  
MISSOURI-IOWA  
7.5-MINUTE SERIES



Produced by the United States Geological Survey  
North American Datum of 1983 (NAD83)  
World Geodetic System of 1984 (WGS84). Projection and  
1 000-meter grid: Universal Transverse Mercator, Zone 15T  
10 000-foot ticks: Missouri Coordinate System of 1983  
(central zone), Iowa Coordinate System of 1983 (south zone)

Imagery: N.A.P., June 2010  
Roads: ©2006-2011, TomTom  
Names: G.N.S., 2011  
Hydrography: National Hydrography Dataset, 2010  
Contours: National Elevation Dataset, 2004  
Boundaries: Census, IBWC, IBC, USGS, 1972 - 2010



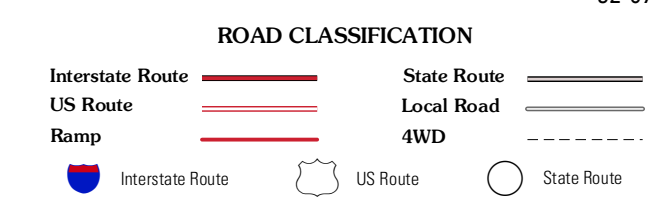
CONTOUR INTERVAL 20 FEET  
NORTH AMERICAN VERTICAL DATUM OF 1988  
This map was produced to conform with the  
National Geospatial Program US Topo Product Standard, 2011.  
A metadata file associated with this product is draft version 0.6.1



QUADRANGLE LOCATION

Pulaski	Milton	Cantril
Killingwinning	Brock	Auen
Downing	Memphis	Arbela

ADJOINING 7.5' QUADRANGLES



BROCK, MO-IA  
2012