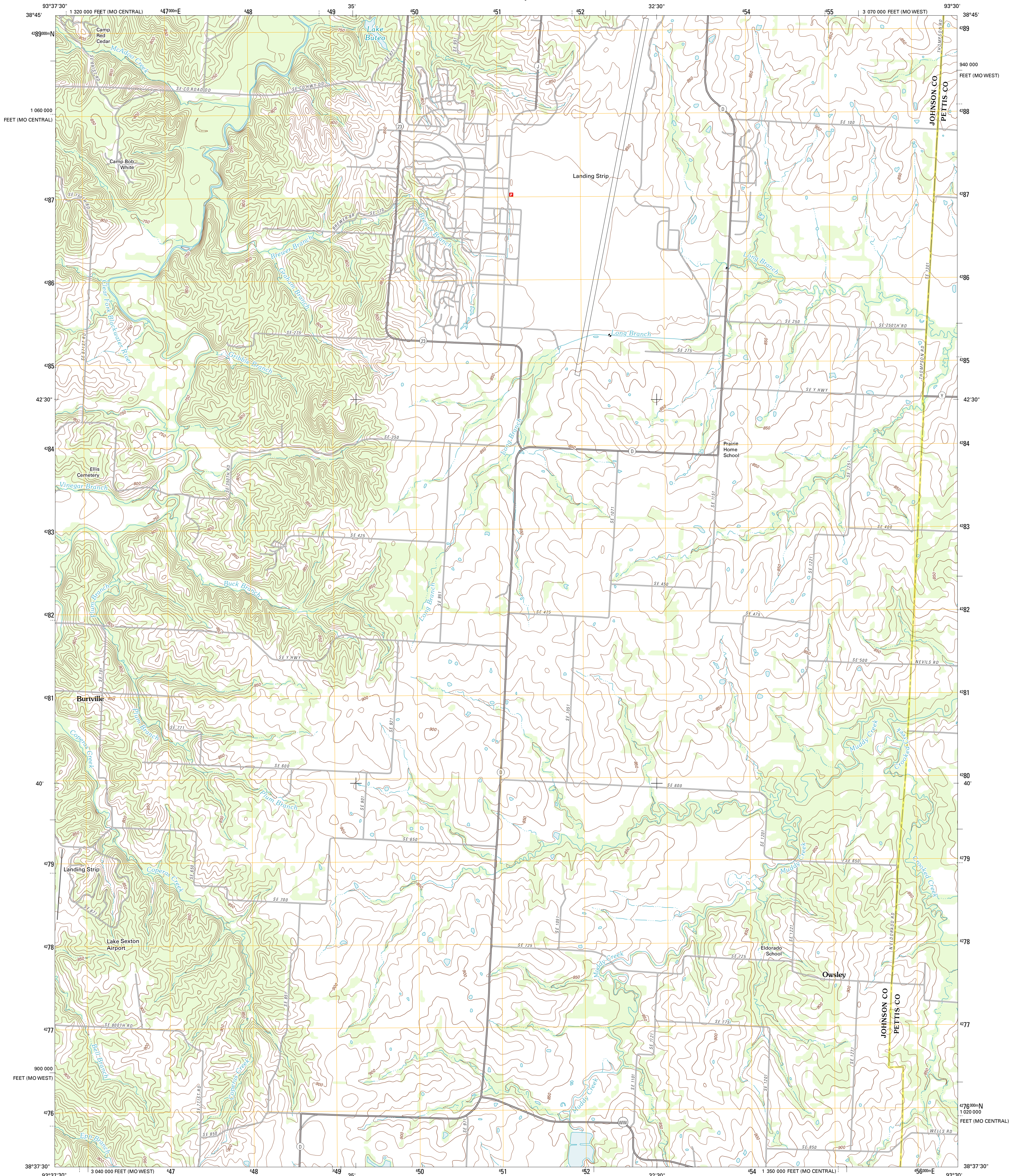




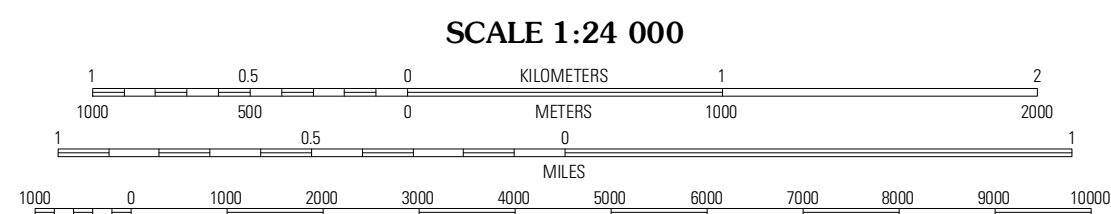
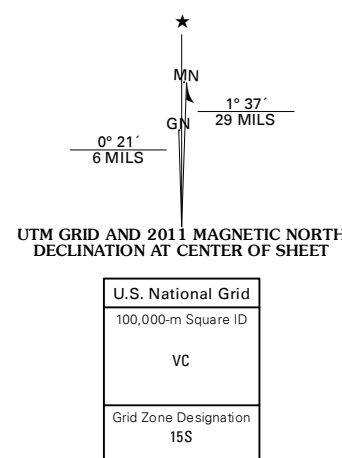
U.S. DEPARTMENT OF THE INTERIOR  
U. S. GEOLOGICAL SURVEY



BURTVILLE QUADRANGLE  
MISSOURI  
7.5-MINUTE SERIES

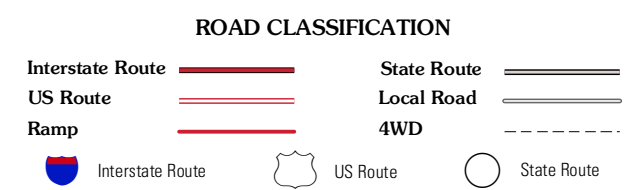


Produced by the United States Geological Survey  
North American Datum of 1983 (NAD83)  
World Geodetic System of 1984 (WGS84). Projection and  
1 000-meter grid: Universal Transverse Mercator, Zone 15S  
10 000-foot ticks: Missouri Coordinate System of 1983 (west  
and central zones)



QUADRANGLE LOCATION

Warendburg East	Knob Noster	La Monte
Comella	Burtville	Green Ridge North
Laeton	Windor	Green Ridge South



CONTOUR INTERVAL 10 FEET  
NORTH AMERICAN VERTICAL DATUM OF 1988

This map was produced to conform with the  
National Geospatial Program US Topo Product Standard, 2011.  
A metadata file associated with this product is draft version 0.6.1

BURTVILLE, MO  
2011

ADJOINING 7.5' QUADRANGLES