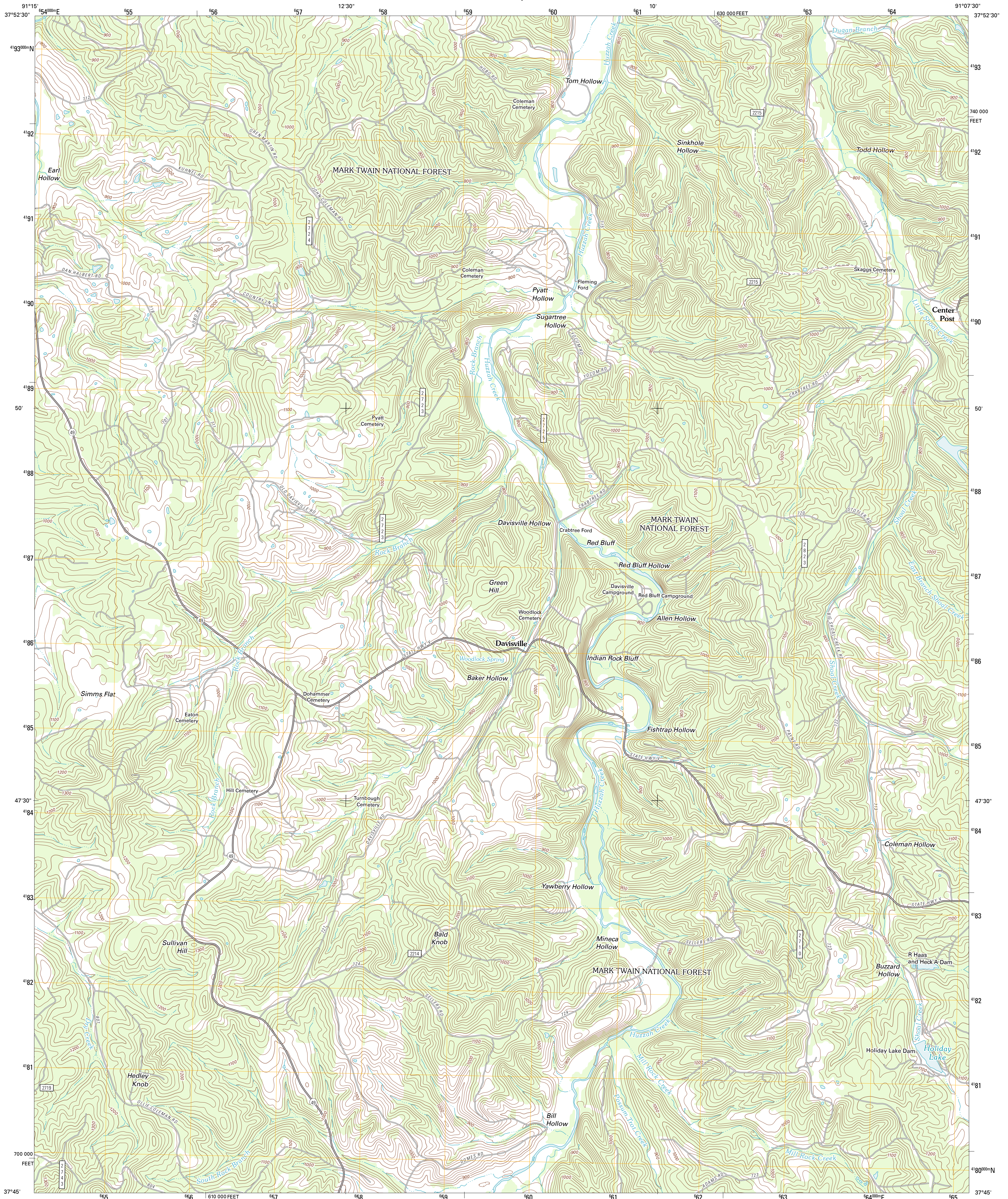




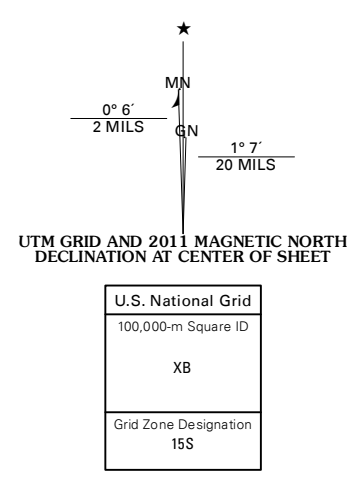
U.S. DEPARTMENT OF THE INTERIOR
U. S. GEOLOGICAL SURVEY



DAVISVILLE QUADRANGLE
MISSOURI-CRAWFORD CO.
7.5-MINUTE SERIES



Produced by the United States Geological Survey
North American Datum of 1983 (NAD83)
World Geodetic System of 1984 (WGS84). Projection and
1 000-meter grid: Universal Transverse Mercator, Zone 15S
10 000-foot ticks: Missouri Coordinate System of 1983 (east zone)



CONTOUR INTERVAL 20 FEET
NORTH AMERICAN VERTICAL DATUM OF 1988

This map was produced to conform with the
National Geospatial Program US Topo Product Standard, 2011.
A metadata file associated with this product is draft version 0.6.1



QUADRANGLE LOCATION

Steeleville	Huzzah	Berrymun
Cherryville	Davisville	Courtois
Houses Mill Spring	Viburnum West	Viburnum East

ADJOINING 7.5 QUADRANGLES

ROAD CLASSIFICATION

	Interstate Route		State Road
	US Route		Local Road
	Ramp		4WD
	FS Primary Route		US Route
	FS Passenger Route		State Road
	FS High Clearance Route		FS High Clearance Route

Check with local Forest Service unit for current travel conditions and restrictions.

DAVISVILLE, MO
2011

Imagery: N.A.P., July 2010
Roads: ©2006-2011 TomTom
Roads within US Forest Service Lands with limited Forest Service updates, 2009
Names: GNIS, 2011
Hydrography: National Hydrography Dataset, 2010
Contours: National Elevation Dataset, 2006
Boundaries: Census, IBWC, IBC, USGS, 1972 - 2010