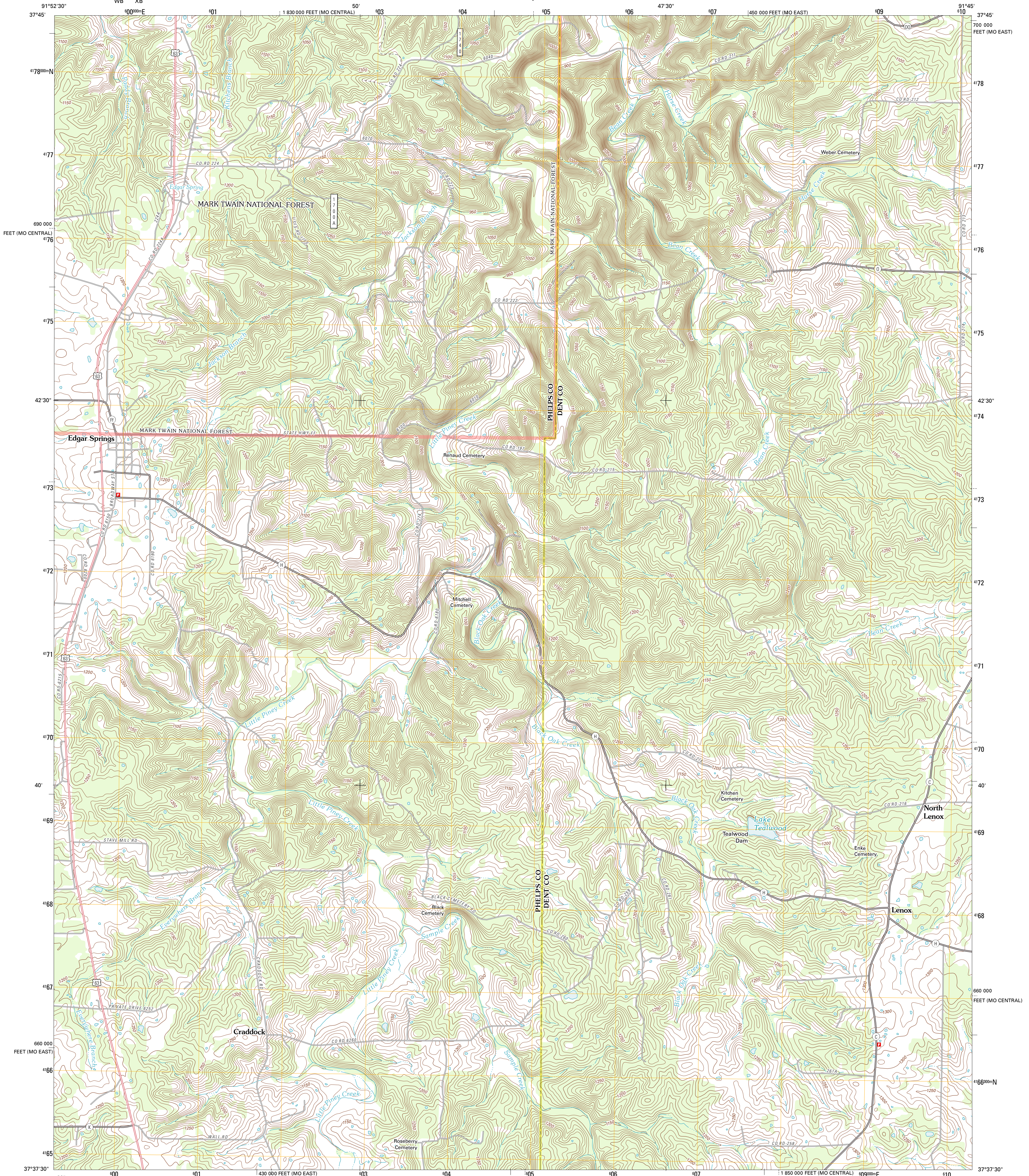




U.S. DEPARTMENT OF THE INTERIOR  
U. S. GEOLOGICAL SURVEY



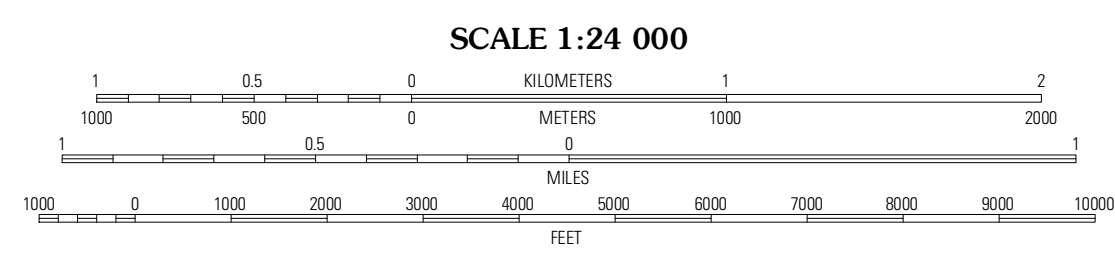
EDGAR SPRINGS QUADRANGLE  
MISSOURI  
7.5-MINUTE SERIES



Produced by the United States Geological Survey  
North American Datum of 1983 (NAD83)  
World Geodetic System of 1984 (WGS84). Projection and  
1 000-meter grid: Universal Transverse Mercator, Zone 15S  
10 000-foot ticks: Missouri Coordinate System of 1983  
(central and east zones)

UTM GRID AND 2012 MAGNETIC NORTH  
DECLINATION AT CENTER OF SHEET

0° 44' 13" MILS  
0° 17' 5" MILS



**ROAD CLASSIFICATION**

Interstate Route (thick red line)  
US Route (red line)  
Ramp (red line with blue triangle)  
State Route (thin red line)  
Local Road (black line)  
4WD (black line with '4WD' label)  
FS Primary Route (black line with 'FS' label)  
FS Passenger Route (black line with 'FS' label)  
FS High Clearance Route (black line with 'FS' label)

QUADRANGLE LOCATION

Kalnuck Hollow	Yancy Mills	Lacoma
Flat	Edgar Springs	Anett
Beulah	Maples	Rhyse

Check with local Forest Service unit for current travel conditions and restrictions.

Imagery:.....NAIP, June 2010 - July 2010  
Roads:.....©2006-2011 TomTom  
Roads within US Forest Service Lands:.....FS Topo Data with limited Forest Service updates, 2009  
Names:.....GNIS, 2011  
Hydrography:.....National Hydrography Dataset, 2010  
Contours:.....National Elevation Dataset, 2004  
Boundaries:.....Census, IBWC, IBC, USGS, 1972 - 2010

U.S. National Grid  
100,000-m Square ID  
WBXB  
Grid Zone Designation  
15S

CONTOUR INTERVAL 10 FEET  
NORTH AMERICAN VERTICAL DATUM OF 1988

This map was produced to conform with the National Geospatial Program US Topo Product Standard, 2011. A metadata file associated with this product is draft version 0.6.1

EDGAR SPRINGS, MO  
2012

ADJOINING 7.5 QUADRANGLES