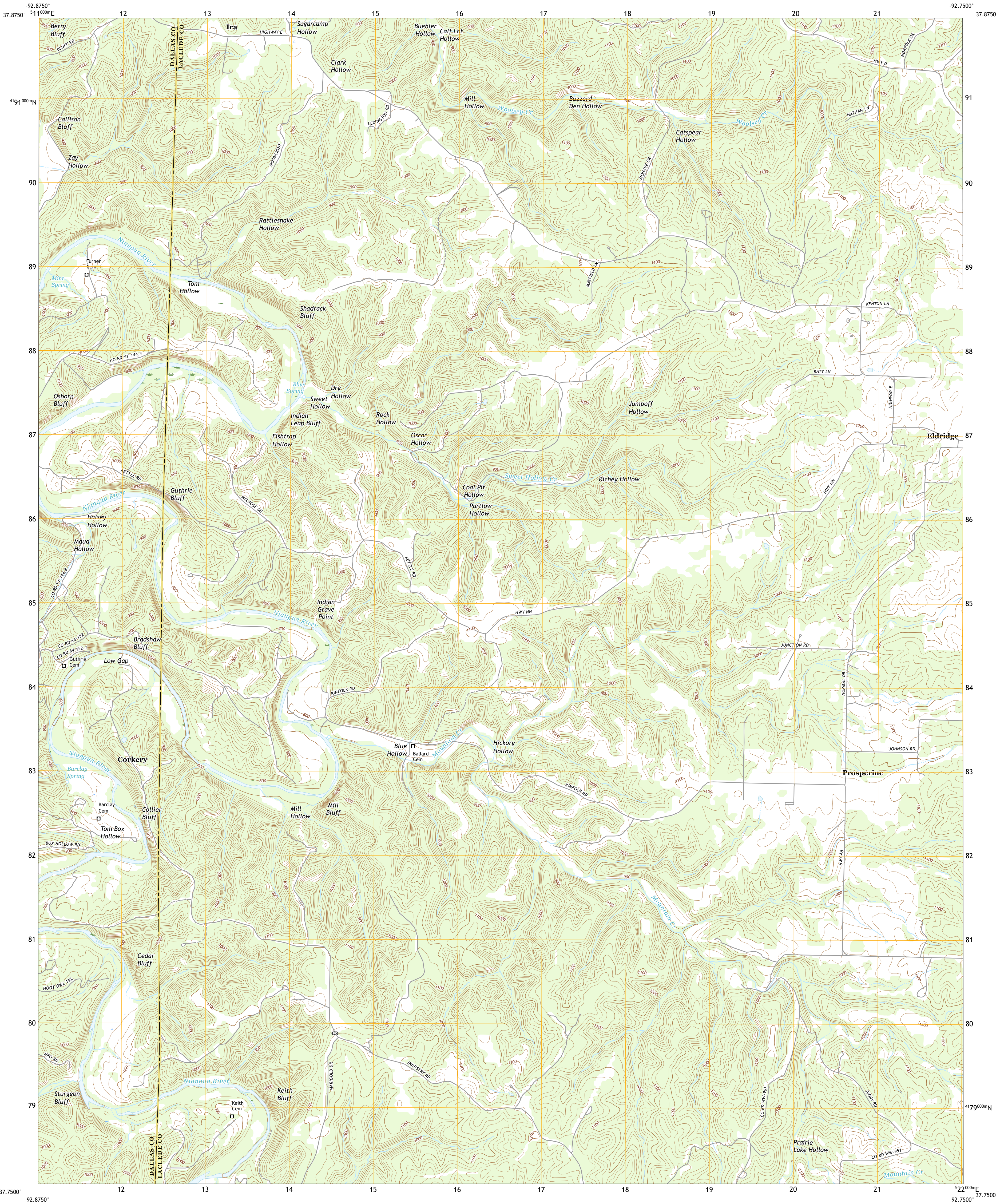




U.S. DEPARTMENT OF THE INTERIOR  
U.S. GEOLOGICAL SURVEY



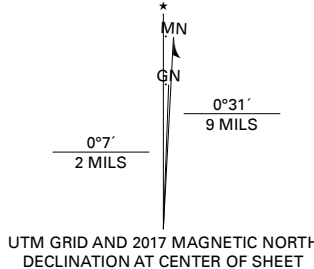
ELDRIDGE WEST QUADRANGLE  
MISSOURI  
7.5-MINUTE SERIES



Produced by the United States Geological Survey

North American Datum of 1983 (NAD83)  
World Geodetic System of 1984 (WGS84). Projection and  
1 000-meter grid/Universal Transverse Mercator, Zone 15S  
This map is not a legal document. Boundaries may be  
generalized for this map scale. Private lands within government  
reservations may not be shown. Obtain permission before  
entering private lands.

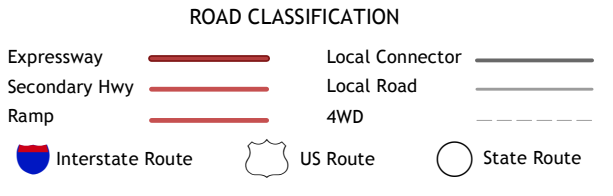
Imagery.....NAIP, August 2016 - October 2016  
Roads.....U.S. Census Bureau, 2016  
Names.....GNIS, 1980 - 2016  
Hydrography.....National Hydrography Dataset, 2002 - 2014  
Contours.....National Elevation Dataset, 2005  
Multiple sources: see metadata file, 2014 - 2016  
Public Land Survey System.....BLM, 2017  
Wetlands.....FWS National Wetlands Inventory 1985 - 1986



1	2	3
4	5	6
7	8	9

ADJOINING QUADRANGLES

1 Macks Creek  
2 Hahatonka  
3 Decaturville  
4 Leadmine  
5 Eldridge East  
6 Windyville  
7 Bennett Springs  
8 Lebanon



ELDRIDGE WEST, MO  
2017

