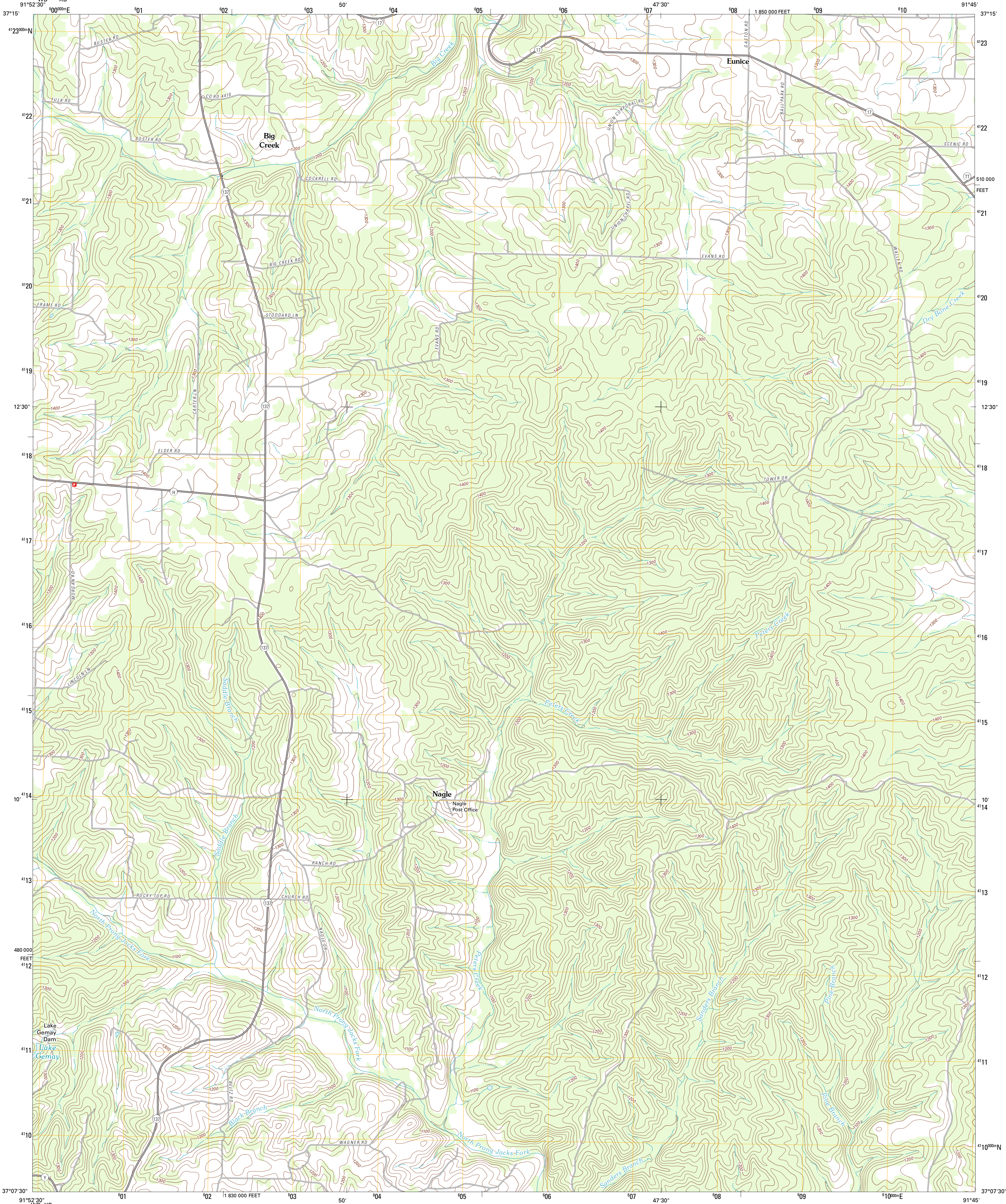




U.S. DEPARTMENT OF THE INTERIOR
U. S. GEOLOGICAL SURVEY



EUNICE QUADRANGLE
MISSOURI-TEXAS CO.
7.5-MINUTE SERIES



Produced by the United States Geological Survey
North American Datum of 1983 (NAD83)
World Geodetic System of 1984 (WGS84). Projection and
1 000-meter grid: Universal Transverse Mercator, Zone 15S
10 000-foot ticks: Missouri Coordinate System of 1983
(central zone)

Imagery.....NAIP, July 2010
Roads.....©2006-2011 TomTom
Names.....GNIS, 2011
Hydrography.....National Hydrography Dataset, 2010
Contours.....National Elevation Dataset, 2005
Boundaries.....Census, BWC, BIC, USGS, 1972 - 2010

UTM GRID AND 2011 MAGNETIC NORTH
DECLINATION AT CENTER OF SHEET

U.S. National Grid
100,000 m Square ID
10
WBXB
Grid Zone Designation
15S

SCALE 1:24 000

1 0.5 0 1 2
1000 500 0 1000 2000
KILOMETERS
1 0.5 0 1 2
1000 500 0 1000 2000
METERS
1 0 1000 2000 3000 4000 5000 6000 7000 8000 9000 10000
MILES
FEET

CONTOUR INTERVAL 20 FEET
NORTH AMERICAN VERTICAL DATUM OF 1988

This map was produced to conform with the
National Geospatial Program US Topo Product Standard, 2011.
A metadata file associated with this product is draft version 0.6.1



QUADRANGLE LOCATION		
Houston	Raymondville	Hartshorn
Elk Creek	Eunice	Summersville
Willow Springs North	Clear Springs	Pine Crest

ROAD CLASSIFICATION

Interstate Route
US Route
Ramp

State Route
Local Road
4WD

EUNICE, MO
2011