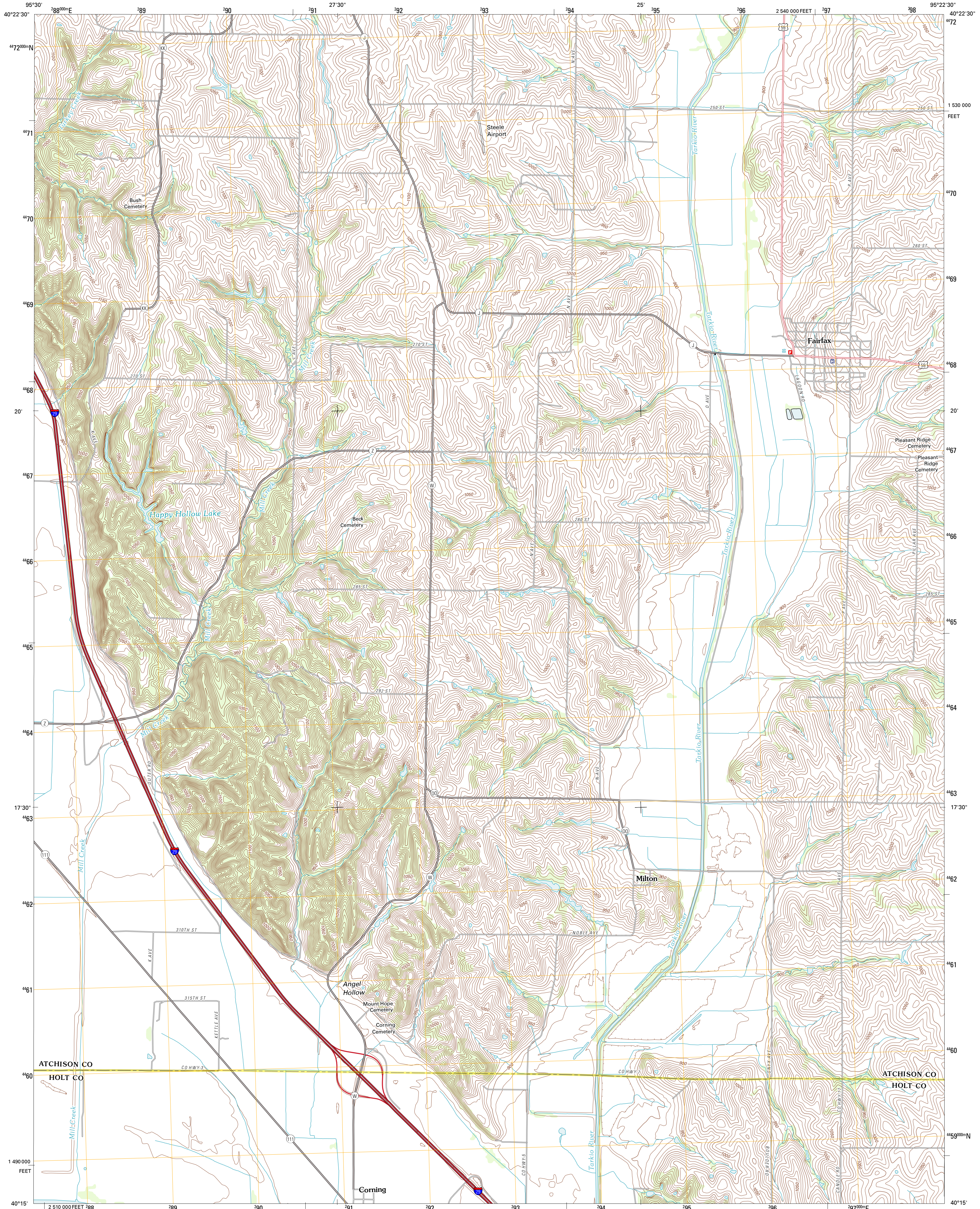




U.S. DEPARTMENT OF THE INTERIOR  
U. S. GEOLOGICAL SURVEY

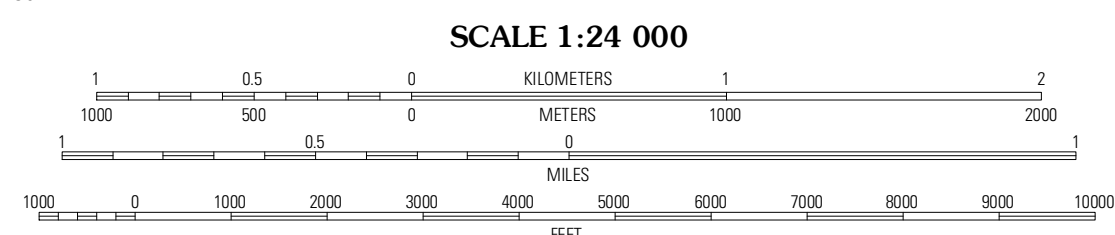
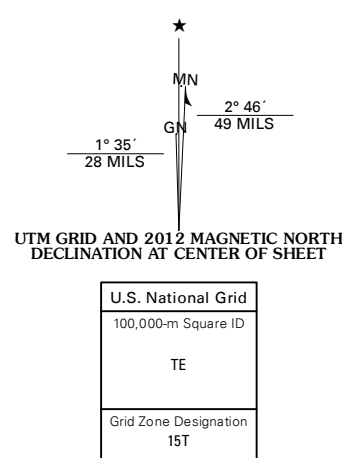


FAIRFAX QUADRANGLE  
MISSOURI  
7.5-MINUTE SERIES



Produced by the United States Geological Survey  
North American Datum of 1983 (NAD83)  
World Geodetic System of 1984 (WGS84). Projection and  
1 000-meter grid Universal Transverse Mercator, Zone 15T  
10 000-foot ticks: Missouri Coordinate System of 1983 (west zone)

Imagery.....NAIP, June 2010 - August 2010  
Roads.....©2006-2011 TomTom  
Names.....GNIS, 2011  
Hydrography.....National Hydrography Dataset, 2010  
Contours.....National Elevation Dataset, 2008  
Boundaries.....Census, IBWC, IBC, USGS, 1972 - 2010



CONTOUR INTERVAL 10 FEET  
NORTH AMERICAN VERTICAL DATUM OF 1988

This map was produced to conform with the  
National Geospatial Program US Topo Product Standard, 2011.  
A metadata file associated with this product is draft version 0.6.1



QUADRANGLE LOCATION

Rock Post	Tarkio West	Tarkio East
Langdon	Fairfax	Tarkio SE
Barada	Corning	Craig

ADJOINING 7.5' QUADRANGLES

**ROAD CLASSIFICATION**  
Interstate Route  
US Route  
Ramp  
State Route  
Local Road  
4WD  
US Route  
State Route

FAIRFAX, MO  
2012