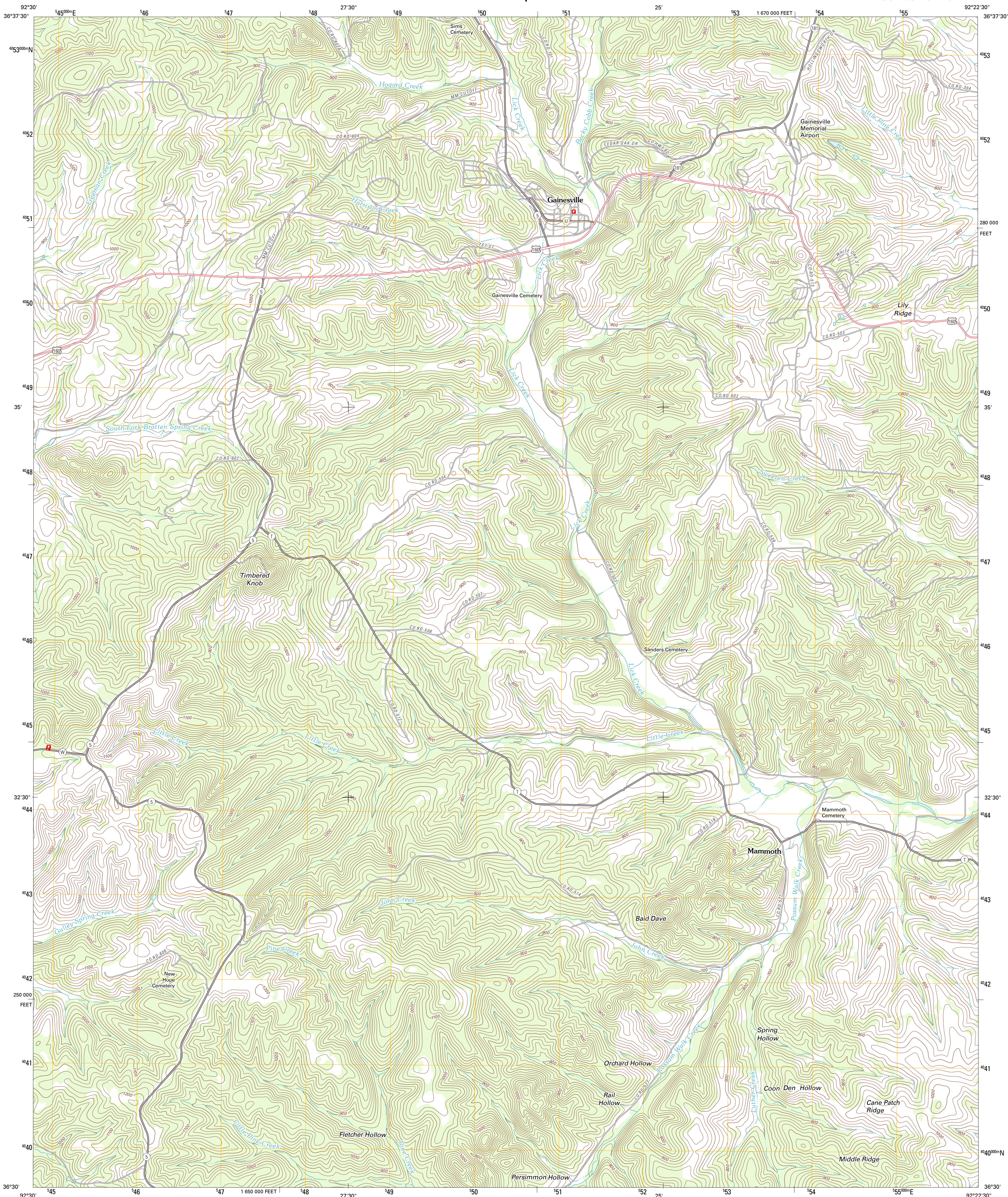




U.S. DEPARTMENT OF THE INTERIOR
U. S. GEOLOGICAL SURVEY



GAINESVILLE QUADRANGLE
MISSOURI-OZARK CO.
7.5-MINUTE SERIES

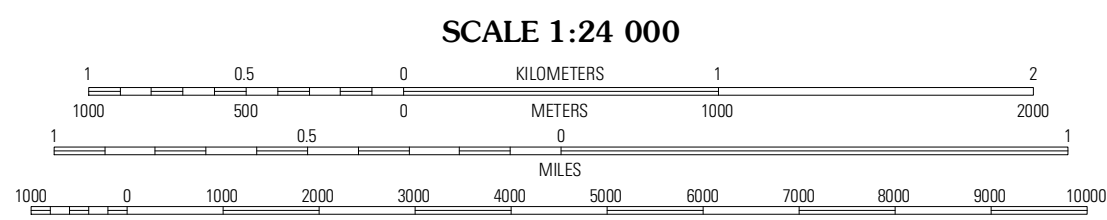


Produced by the United States Geological Survey
North American Datum of 1983 (NAD83)
World Geodetic System of 1984 (WGS84). Projection and
1 000-meter grid: Universal Transverse Mercator, Zone 15S
10 000-foot ticks: Missouri Coordinate System of 1983
(central zone)

Imagery.....NAIP, June 2010
Roads.....©2006-2011 TomTom
Names.....GNIS, 2011
Hydrography.....National Hydrography Dataset, 2010
Contours.....National Elevation Dataset, 2005
Boundaries.....Census, IBWC, IBC, USGS, 1972 - 2010

UTM GRID AND 2012 MAGNETIC NORTH
DECLINATION AT CENTER OF SHEET

U.S. National Grid
100,000-m Square ID
WA
Grid Zone Designation
15S



CONTOUR INTERVAL 20 FEET
NORTH AMERICAN VERTICAL DATUM OF 1988

This map was produced to conform with the
National Geospatial Program US Topo Product Standard, 2011.
A metadata file associated with this product is draft version 0.6.1



Willbott	Gainesville NW	Sycamore
Isabella	Gainesville	Udall
Bull Shoals	Midway	Clarkridge

ROAD CLASSIFICATION

Interstate Route
US Route
Ramp

State Route
Local Road
4WD

GAINESVILLE, MO
2012