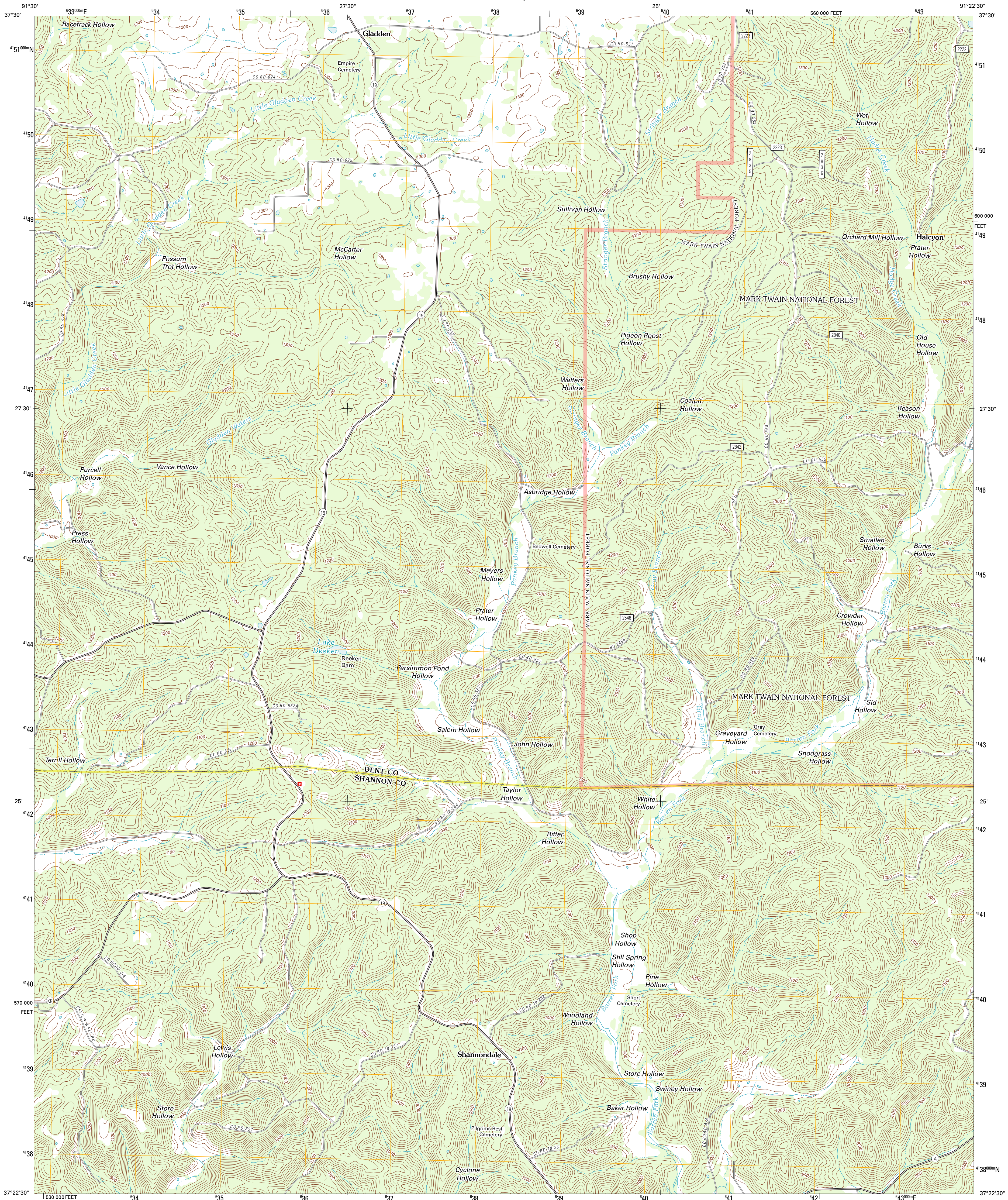




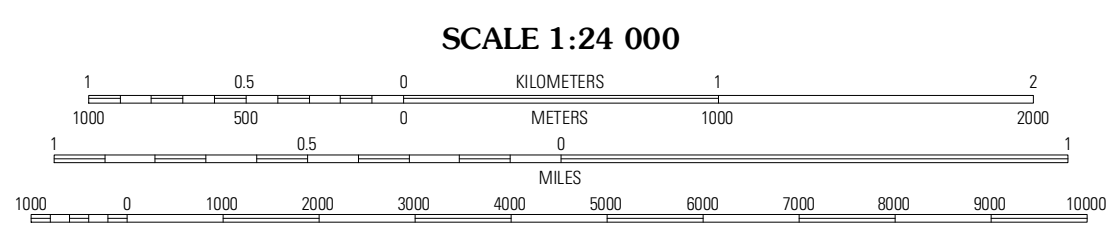
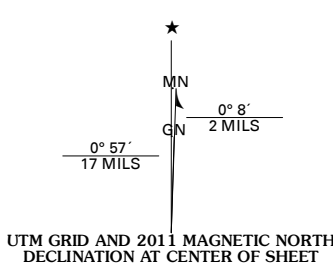
U.S. DEPARTMENT OF THE INTERIOR
U. S. GEOLOGICAL SURVEY



GLADDEN QUADRANGLE
MISSOURI
7.5-MINUTE SERIES



Produced by the United States Geological Survey
North American Datum of 1983 (NAD83)
World Geodetic System of 1984 (WGS84). Projection and
1 000-meter grid: Universal Transverse Mercator, Zone 15S
10 000-foot ticks: Missouri Coordinate System of 1983 (east zone)



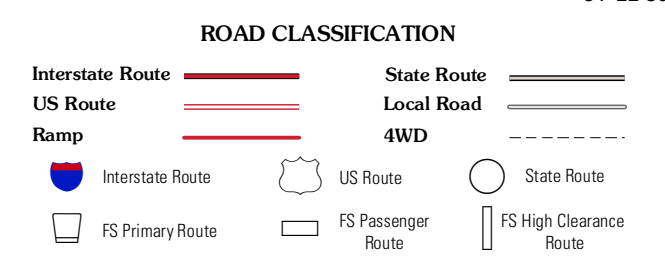
CONTOUR INTERVAL 20 FEET
NORTH AMERICAN VERTICAL DATUM OF 1988

This map was produced to conform with the
National Geospatial Program US Topo Product Standard, 2011.
A metadata file associated with this product is draft version 0.6.1



QUADRANGLE LOCATION

Darlen	Doss	Stone Hill
Cedar Grove	Gladden	Loggers Lake
Lewis Hollow	Round Spring	The Sinks



Check with local Forest Service unit for current travel conditions and restrictions.

GLADDEN, MO
2011

Imagery: N/AIP, July 2010
Roads: 2006-2011 TomTom
Roads within US Forest Service Lands: FSTopo, Data with limited Forest Service updates, 2009
Names: GNS, 2011
Hydrography: National Hydrography Dataset, 2010
Contours: National Elevation Dataset, 2001
Boundaries: Census, BWC, IBC, USGS, 1972 - 2010

U.S. National Grid	100,000m Square ID	XB
Grid Zone Designation	15S	