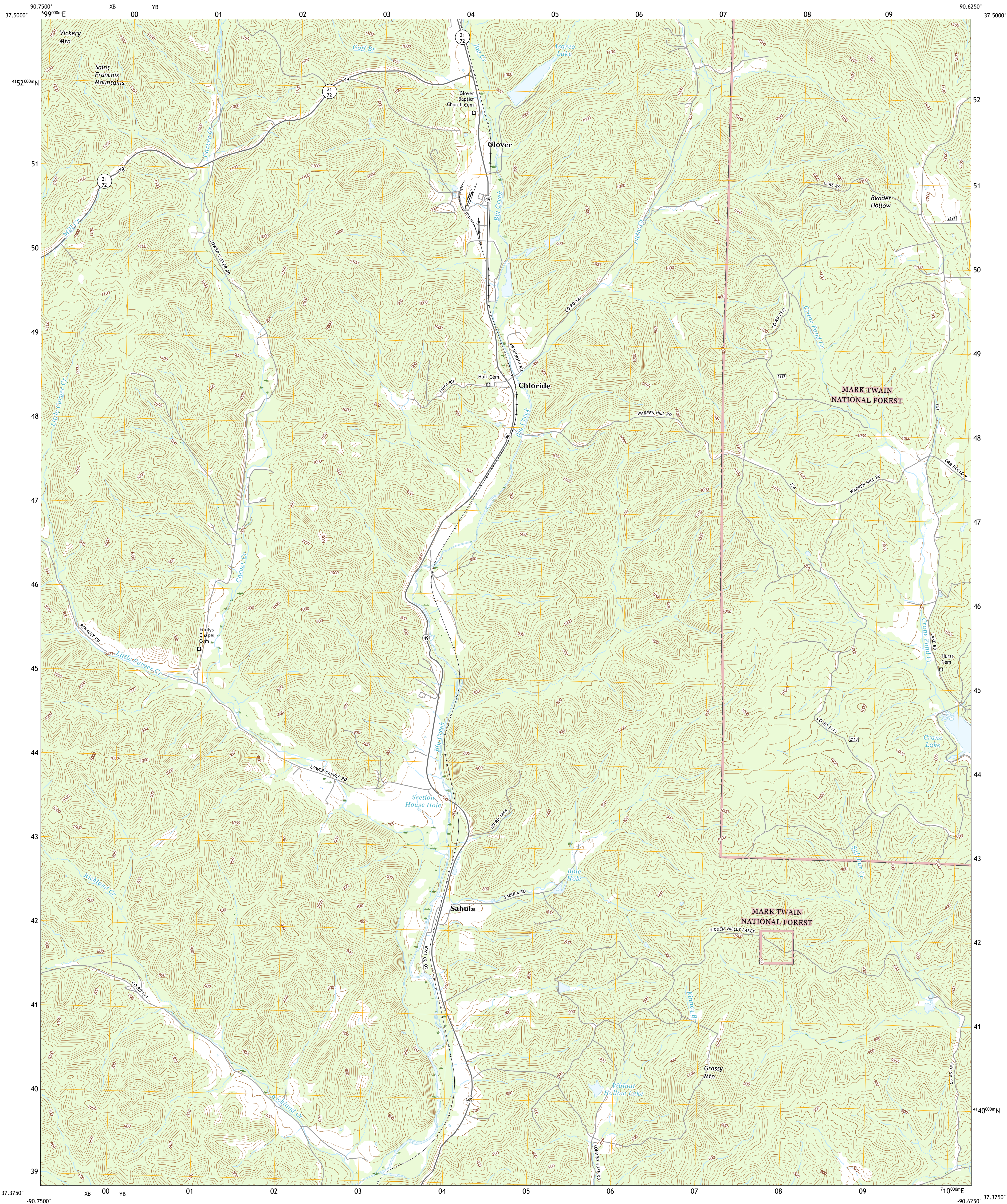




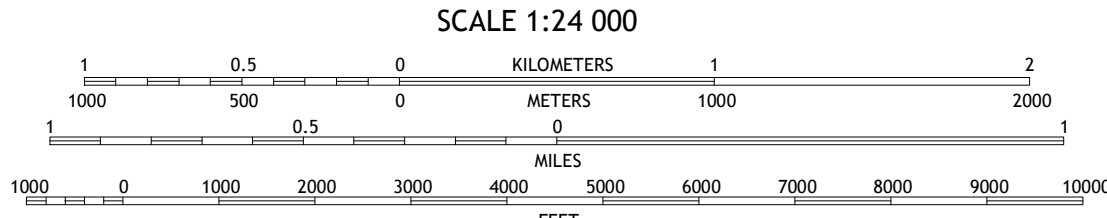
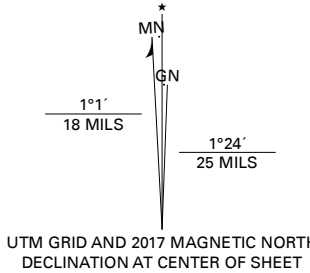
U.S. DEPARTMENT OF THE INTERIOR  
U.S. GEOLOGICAL SURVEY



GLOVER QUADRANGLE  
MISSOURI - IRON COUNTY  
7.5-MINUTE SERIES



Produced by the United States Geological Survey  
North American Datum of 1983 (NAD83)  
World Geodetic System of 1984 (WGS84). Projection and  
1 000-meter grid: Universal Transverse Mercator, Zone 15S  
This map is not a legal document. Boundaries may be  
generalized for this map scale. Private lands within government  
reservations may not be shown. Obtain permission before  
entering private lands.  
Imagery.....NAIP, August 2016 - October 2016  
Roads.....U.S. Census Bureau, 2016  
Roads within US Forest Service Lands.....FS Topo  
Data with limited Forest Service updates, 2017  
Names.....GNIS, 1980 - 2016  
Hydrography.....National Hydrography Dataset, 2002 - 2017  
Contours.....National Elevation Dataset, 2008  
Boundaries.....Multiple sources; see metadata file  
Public Land Survey System.....BLM, 2017  
Wetlands.....FWS National Wetlands Inventory 1983 - 1984



CONTOUR INTERVAL 20 FEET  
NORTH AMERICAN VERTICAL DATUM OF 1988  
This map was produced to conform with the  
National Geospatial Program US Topo Product Standard, 2011.  
A metadata file associated with this product is draft version 0.6.18



1	2	3	1 Johnson Shut-In
4	5	6	2 Ironton
7	8	9	3 Lake Killarney
			4 Lesterville
			5 Des Arc NE
			6 Lesterville SE
			7 Des Arc
			8 Brunot

ADJOINING QUADRANGLES

ROAD CLASSIFICATION	
Expressway	Local Connector
Secondary Hwy	Local Road
Ramp	4WD
Interstate Route	US Route
FS Primary Route	FS Passenger Route
	FS High Clearance Route

Check with local Forest Service unit  
for current travel conditions and restrictions.

GLOVER, MO  
2017

