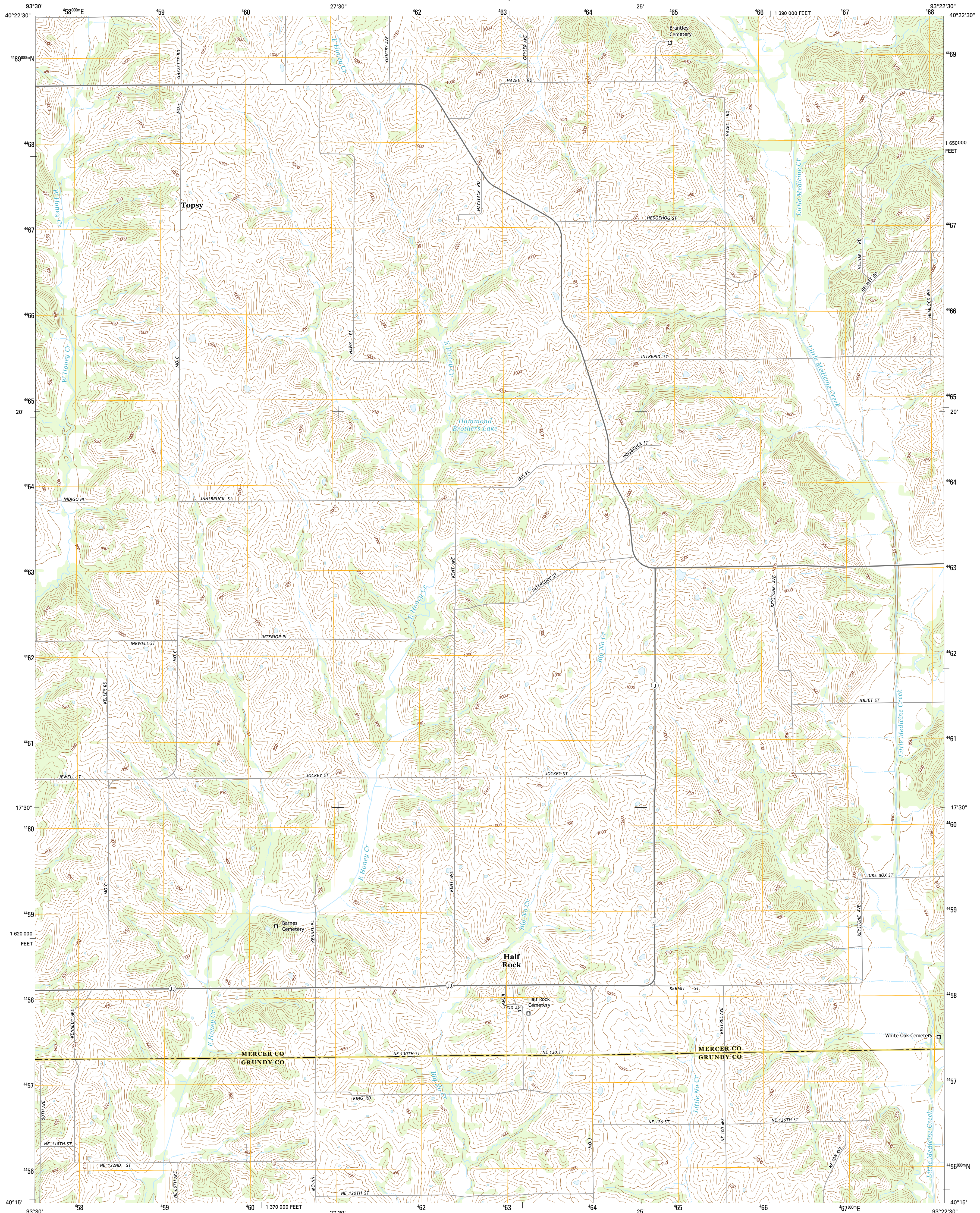




U.S. DEPARTMENT OF THE INTERIOR  
U.S. GEOLOGICAL SURVEY



HALF ROCK QUADRANGLE  
MISSOURI  
7.5-MINUTE SERIES



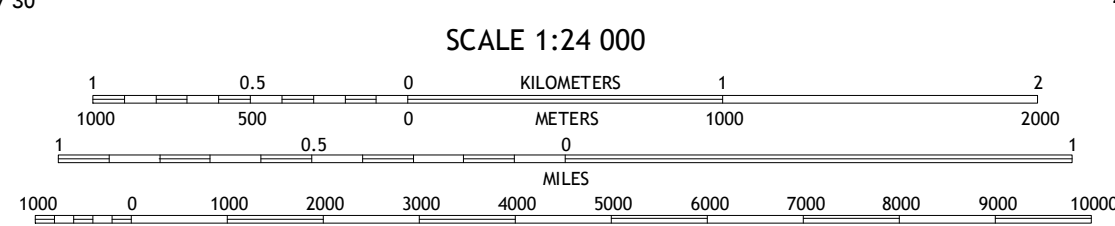
Produced by the United States Geological Survey  
North American Datum of 1983 (NAD83)  
World Geodetic System of 1984 (WGS84). Projection and  
1 000-meter grid: Universal Transverse Mercator, Zone 15T  
10 000-foot ticks: Missouri Coordinate System of 1983 (central  
zone)

This map is not a legal document. Boundaries may be  
generalized for this map scale. Private lands within government  
reservations may not be shown. Obtain permission before  
entering private lands.

Imagery.....NAIP, June 2012  
Roads.....HERE, ©2013  
Names.....GNIS, 2013  
Hydrography.....National Hydrography Dataset, 2012  
Contours.....National Elevation Dataset, 2005  
Boundaries.....Multiple sources; see metadata file 1972 - 2014  
Public Land Survey System.....BLM, 2011

UTM GRID AND 2014 MAGNETIC NORTH  
DECLINATION AT CENTER OF SHEET

U.S. National Grid  
100,000-m Square ID  
VE  
Grid Zone Designation  
15T



ROAD CLASSIFICATION

Expressway  
Secondary Hwy  
Ramp  
Interstate Route  
Local Connector  
Local Road  
4WD  
US Route  
State Route

1	2	3
4	5	6
7	8	

ADJOINING QUADRANGLES

- 1 Princeton
- 2 Ravanna
- 3 Lucerne
- 4 Mill Grove
- 5 Harris
- 6 Spickard
- 7 Galt
- 8 Osgood

CONTOUR INTERVAL 10 FEET  
NORTH AMERICAN VERTICAL DATUM OF 1988

This map was produced to conform with the  
National Geospatial Program US Topo Product Standard, 2011.  
A metadata file associated with this product is draft version 0.6.18

HALF ROCK, MO  
2014

