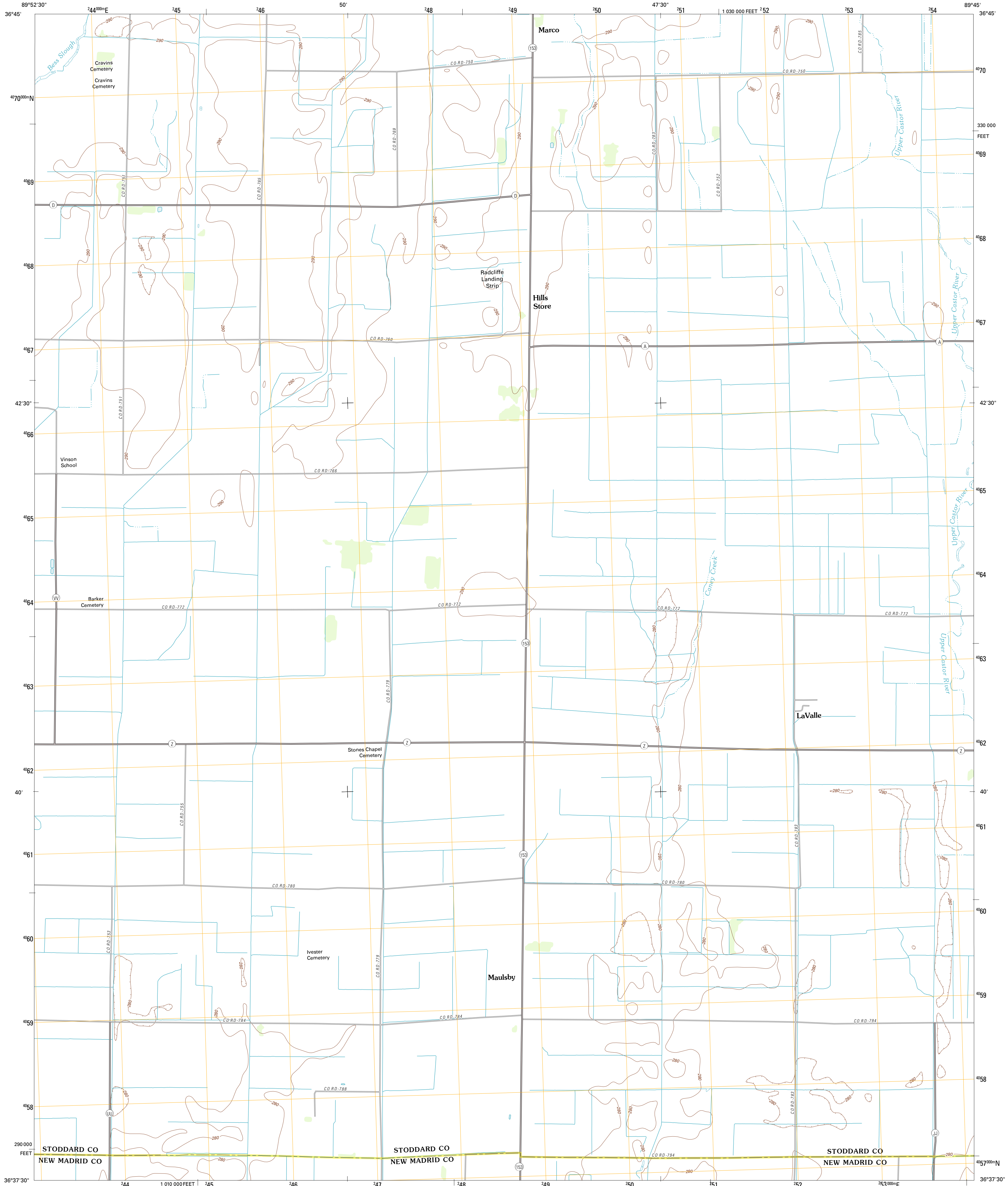




U.S. DEPARTMENT OF THE INTERIOR
U. S. GEOLOGICAL SURVEY

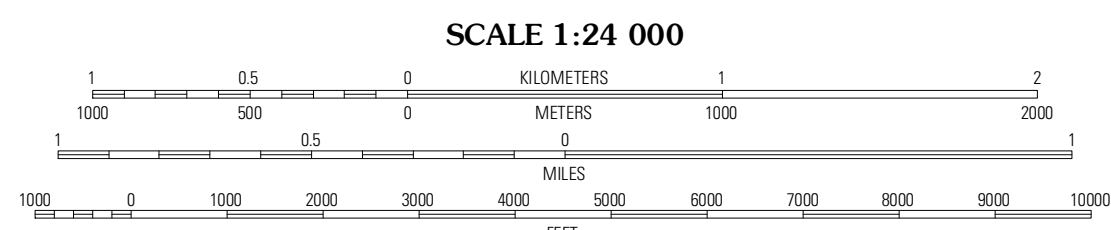
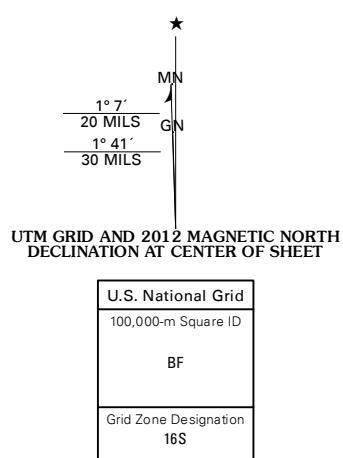


HILLS STORE QUADRANGLE
MISSOURI
7.5-MINUTE SERIES



Produced by the United States Geological Survey
North American Datum of 1983 (NAD83)
World Geodetic System of 1984 (WGS84) Projection and
1 000-meter grid: Universal Transverse Mercator, Zone 16S
10 000-foot ticks: Missouri Coordinate System of 1983 (east zone)

Imagery: NAIP, June 2010
Roads: ©2006-2011 TomTom
Names: GNS, 2011
Hydrography: National Hydrography Dataset, 2010
Contours: National Elevation Dataset, 2006
Boundaries: Census, BWC, IBC, USGS, 1972 - 2010



CONTOUR INTERVAL 10 FEET
NORTH AMERICAN VERTICAL DATUM OF 1988
This map was produced to conform with the
National Geospatial Program US Topo Product Standard, 2011.
A metadata file associated with this product is draft version 0.6.1



QUADRANGLE LOCATION

Dexter	Essex	Morehouse
Bernie	Hills Store	Charter Oak
Malden	Parma	Catron

ROAD CLASSIFICATION

Interstate Route	State Route
US Route	Local Road
Ramp	4WD

HILLS STORE, MO
2012

ADJOINING 7.5' QUADRANGLES