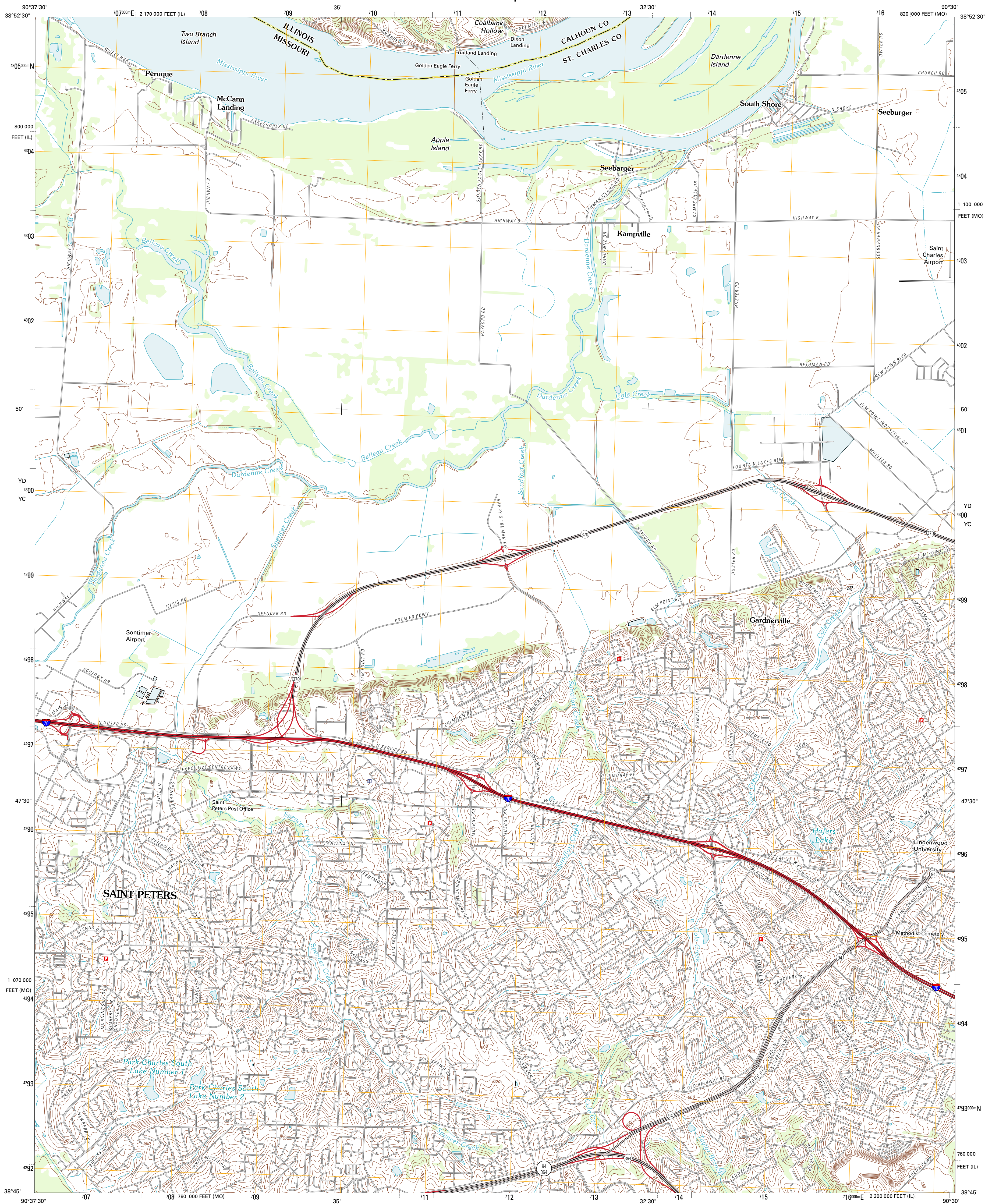




U.S. DEPARTMENT OF THE INTERIOR
U. S. GEOLOGICAL SURVEY

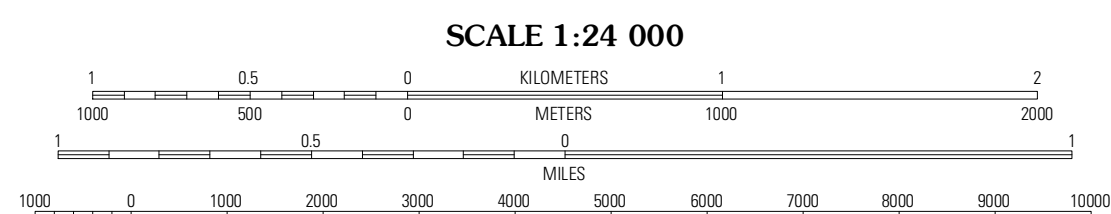
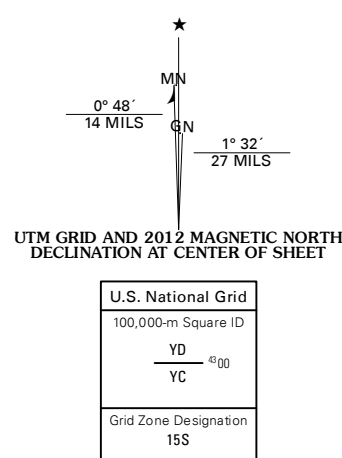


KAMPVILLE QUADRANGLE
MISSOURI-ILLINOIS
7.5-MINUTE SERIES



Produced by the United States Geological Survey
North American Datum of 1983 (NAD83)
World Geodetic System of 1984 (WGS84). Projection and
1 000-meter grid: Universal Transverse Mercator, Zone 15S
10 000-foot ticks: Missouri Coordinate System of 1983 (east
zone), Illinois Coordinate System of 1983 (west zone)

Imagery.....©2006-2011 NAIP, July 2010
Roads.....©2006-2011 TomTom
Names.....©2006-2011 GNS, 2011
Hydrography.....National Hydrography Dataset, 2010
Contours.....National Elevation Dataset, 2002
Boundaries.....Census, IBWC, IBC, USGS, 1972 - 2010



CONTOUR INTERVAL 10 FEET
NORTH AMERICAN VERTICAL DATUM OF 1988
This map was produced to conform with the
National Geospatial Program US Topo Product Standard, 2011.
A metadata file associated with this product is draft version 0.6.1



ADJOINING 7.5' QUADRANGLES		
Winfield	Brussels	Grafton
Ofallon	Kampville	Saint Charles
Weldon Spring	Chesterfield	Creve Coeur

ROAD CLASSIFICATION		
Interstate Route	State Route	Local Road
US Route	State Route	4WD
Ramp	State Route	4WD
Interstate Route	US Route	State Route

KAMPVILLE, MO-IL
2012