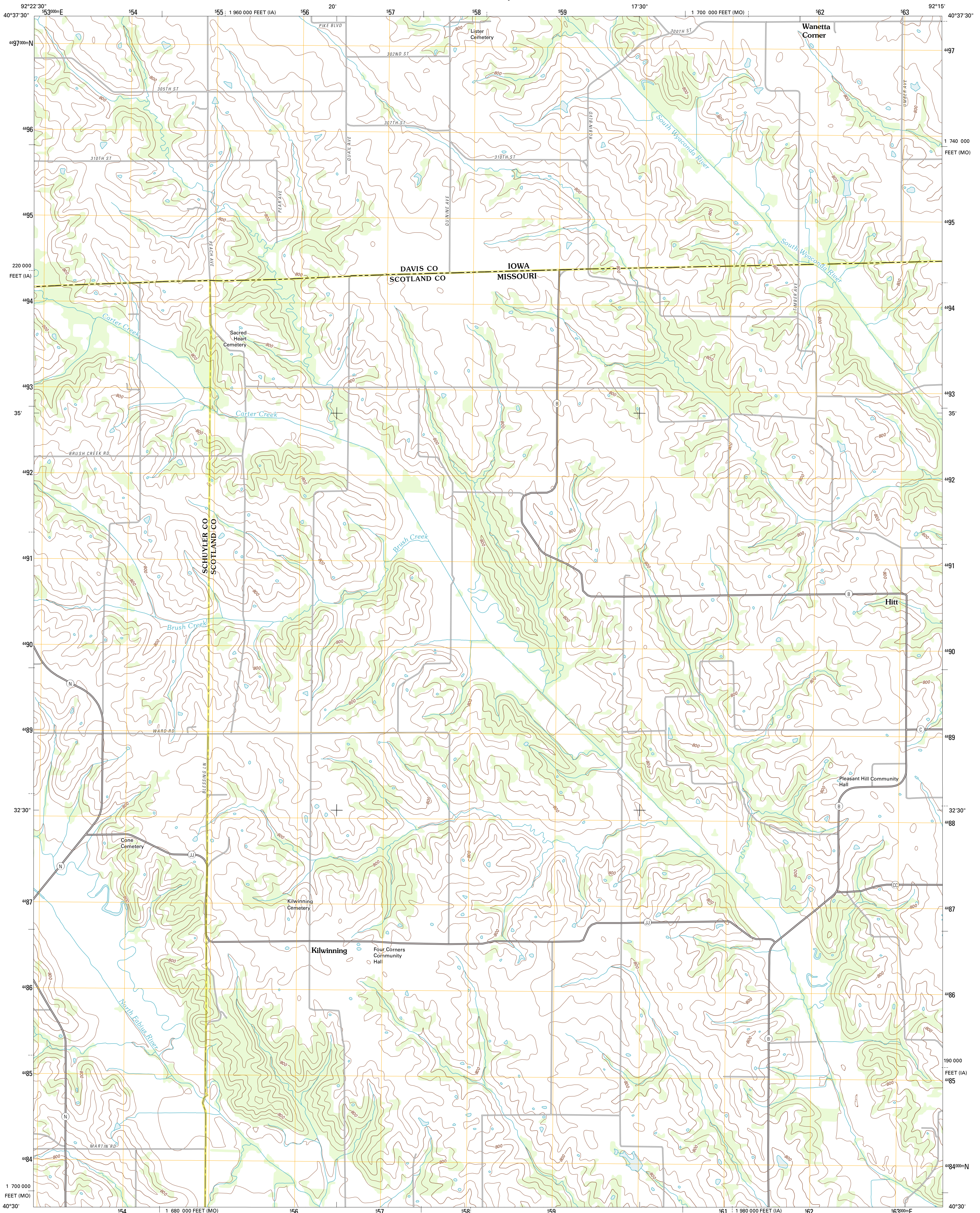




U.S. DEPARTMENT OF THE INTERIOR
U. S. GEOLOGICAL SURVEY

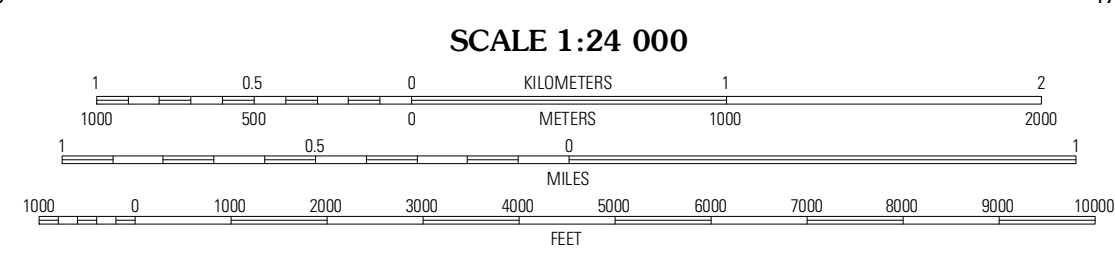
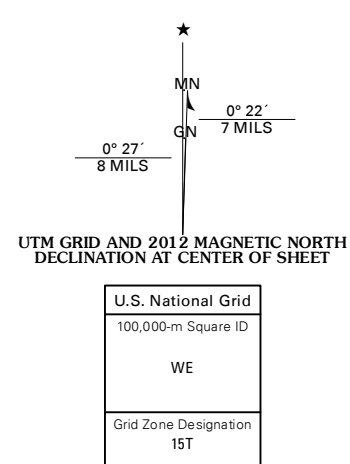


KILWINNING QUADRANGLE
MISSOURI-IOWA
7.5-MINUTE SERIES



Produced by the United States Geological Survey
North American Datum of 1983 (NAD83)
World Geodetic System of 1984 (WGS84) Projection and
1 000-meter grid: Universal Transverse Mercator, Zone 15T
10 000-foot ticks: Missouri Coordinate System of 1983
(central zone), Iowa Coordinate System of 1983 (south zone)

Imagery: N.A.P., June 2010
Roads: ©2006-2011, TomTom
Names: National Geospatial Information Administration, 2011
Hydrography: National Hydrography Dataset, 2010
Contours: National Elevation Dataset, 2004
Boundaries: Census, IBWC, IBC, USGS, 1972 - 2010

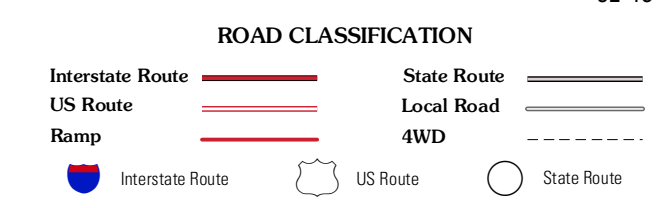


CONTOUR INTERVAL 20 FEET
NORTH AMERICAN VERTICAL DATUM OF 1988
This map was produced to conform with the
National Geospatial Program US Topo Product Standard, 2011.
A metadata file associated with this product is draft version 0.6.1



QUADRANGLE LOCATION

Bloomfield	Pulaski	Milton
Bunker Hill	Kilwinning	Brook
Downing NW	Downing	Memphis



KILWINNING, MO-IA
2012

ADJOINING 7.5' QUADRANGLES