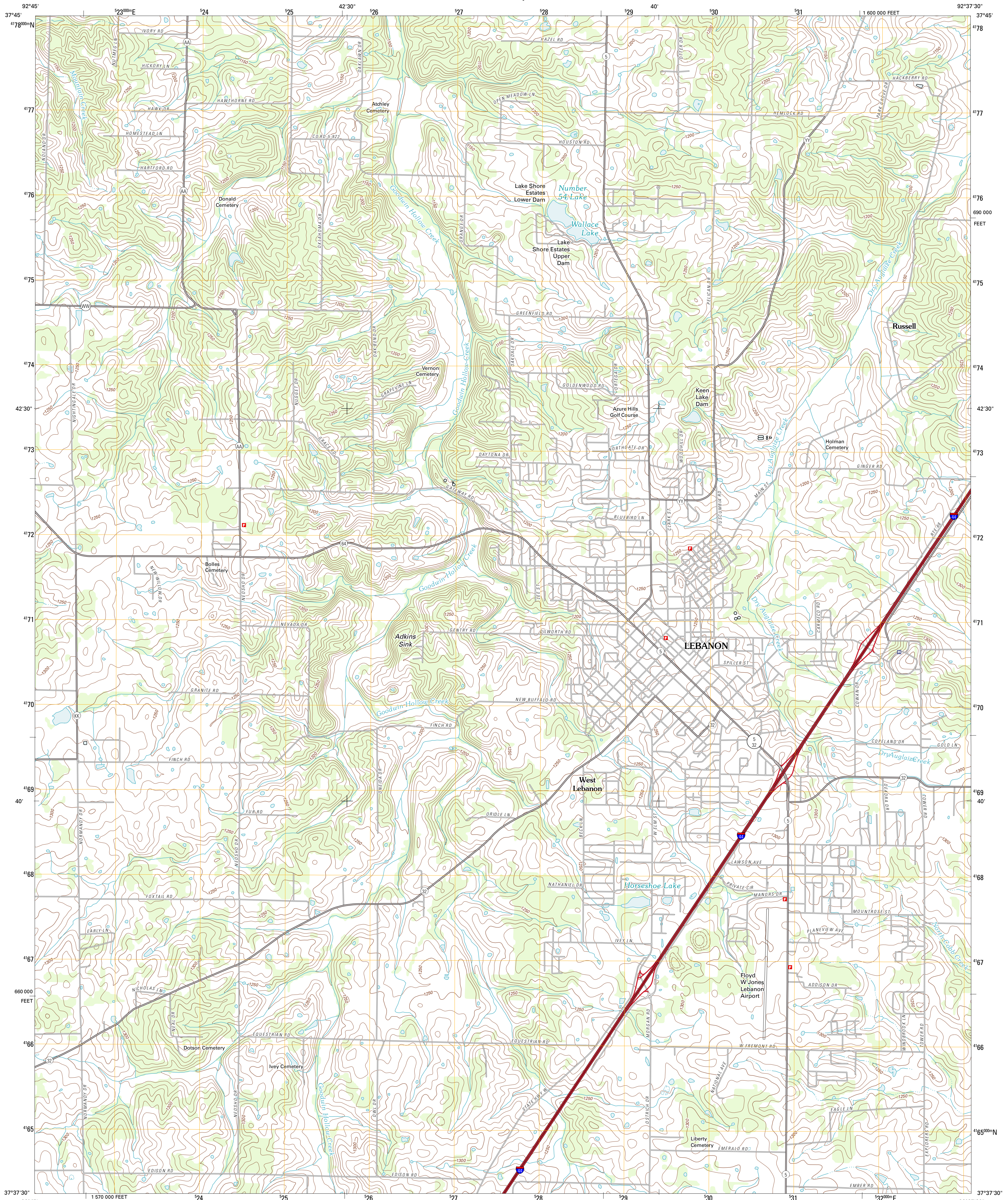




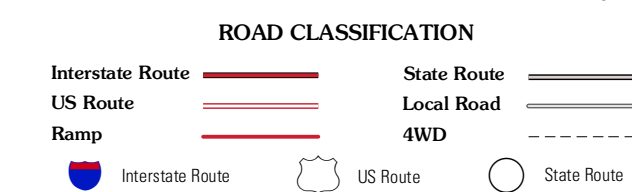
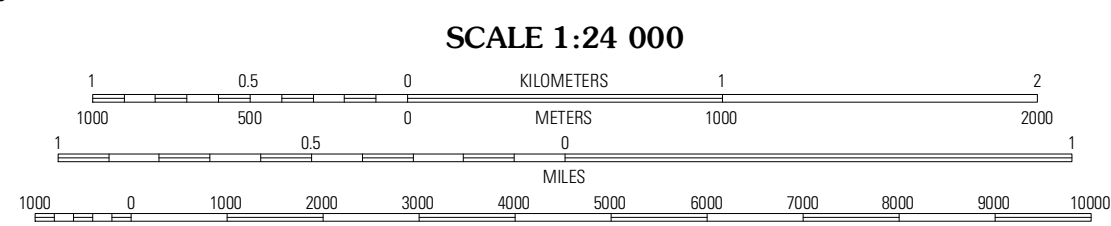
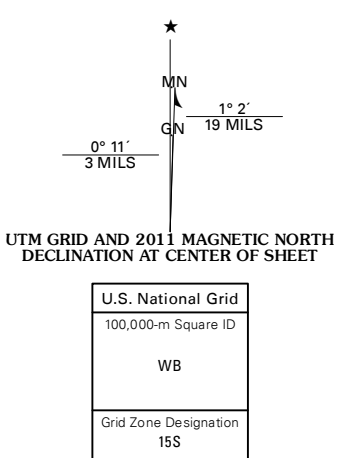
U.S. DEPARTMENT OF THE INTERIOR
U. S. GEOLOGICAL SURVEY



LEBANON QUADRANGLE
MISSOURI-LACLEDE CO.
7.5-MINUTE SERIES



Produced by the United States Geological Survey
North American Datum of 1983 (NAD83)
World Geodetic System of 1984 (WGS84). Projection and
1 000-meter grid: Universal Transverse Mercator, Zone 15S
10 000-foot ticks: Missouri Coordinate System of 1983
(central zone)



QUADRANGLE LOCATION

Eldridge West	Eldridge East	Stoutland
Bennett Springs	Lebanon	Oakland
Phillipsburg	Brush Creek	Russ

CONTOUR INTERVAL 10 FEET
NORTH AMERICAN VERTICAL DATUM OF 1988

This map was produced to conform with the
National Geospatial Program US Topo Product Standard, 2011.
A metadata file associated with this product is draft version 0.6.1

LEBANON, MO
2011

ADJOINING 7.5 QUADRANGLES