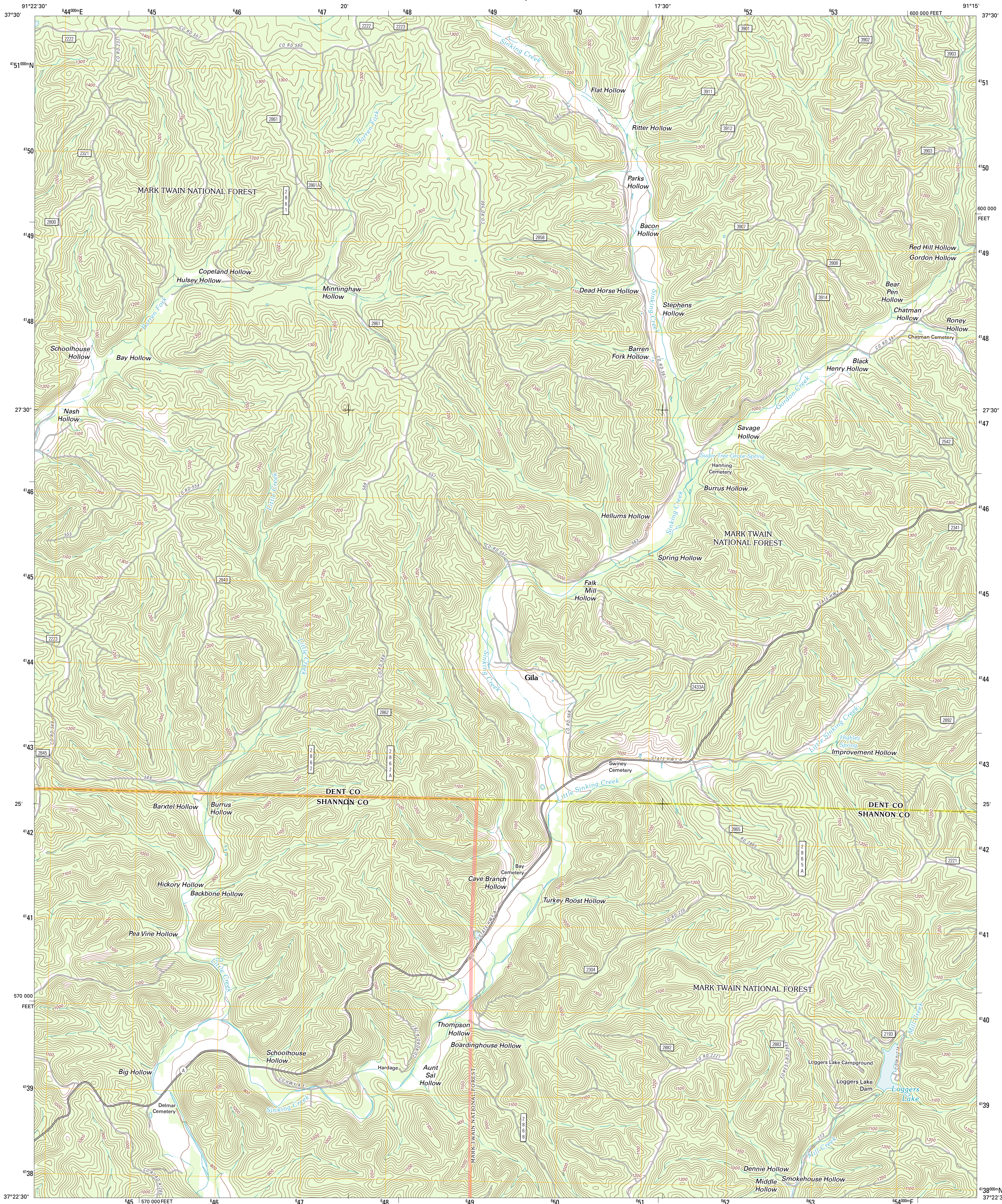




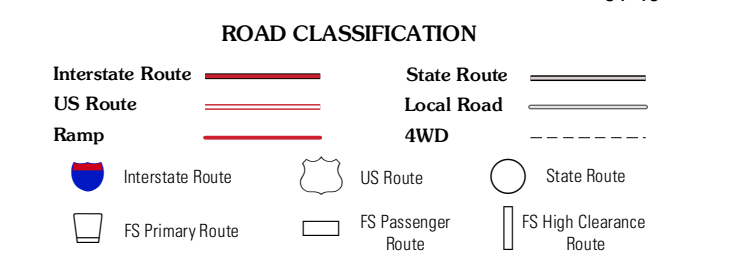
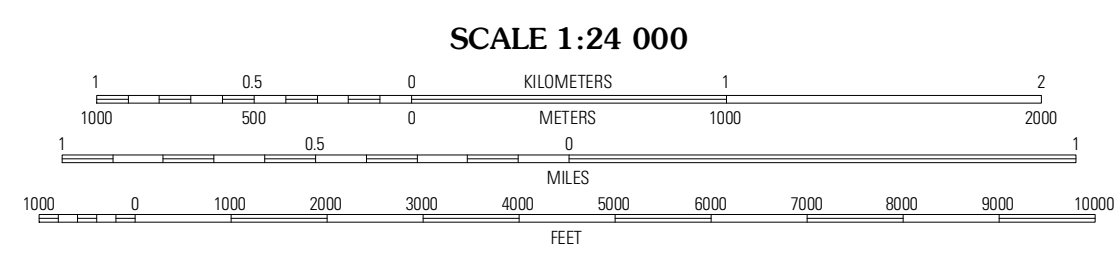
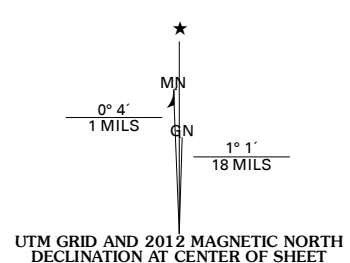
U.S. DEPARTMENT OF THE INTERIOR
U. S. GEOLOGICAL SURVEY



LOGGERS LAKE QUADRANGLE
MISSOURI
7.5-MINUTE SERIES



Produced by the United States Geological Survey
North American Datum of 1983 (NAD83)
World Geodetic System of 1984 (WGS84). Projection and
1 000-meter grid: Universal Transverse Mercator, Zone 15S
10 000-foot ticks: Missouri Coordinate System of 1983 (east zone)



Imagery: N/AIP, July 2010
Roads: ©2006-2011 TomTom
Roads within US Forest Service Lands: ©FS Topo Data with limited Forest Service updates, 2009
Names: ©GNIS, 2011
Hydrography: National Hydrography Dataset, 2010
Contours: National Elevation Dataset, 2001
Boundaries: Census, IBWC, IBC, USGS, 1972 - 2010

CONTOUR INTERVAL 20 FEET
NORTH AMERICAN VERTICAL DATUM OF 1988

This map was produced to conform with the National Geospatial Program US Topo Product Standard, 2011. A metadata file associated with this product is draft version 0.6.1

Doss	Stone Hill	Greely
Gladden	Loggers Lake	Bunker
Round Spring	The Sinks	Midridge

ADJOINING 7.5 QUADRANGLES

LOGGERS LAKE, MO
2012