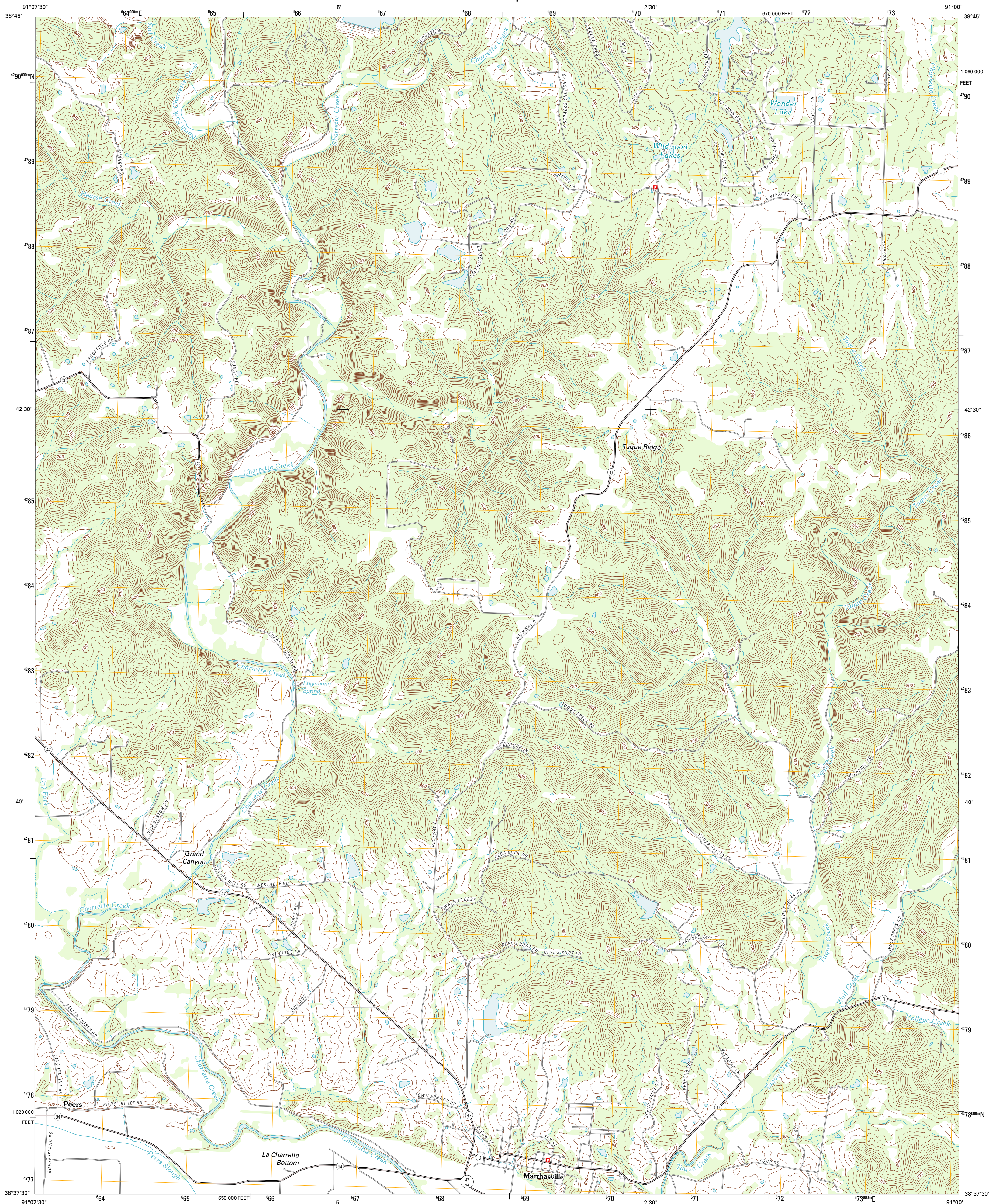




U.S. DEPARTMENT OF THE INTERIOR  
U. S. GEOLOGICAL SURVEY



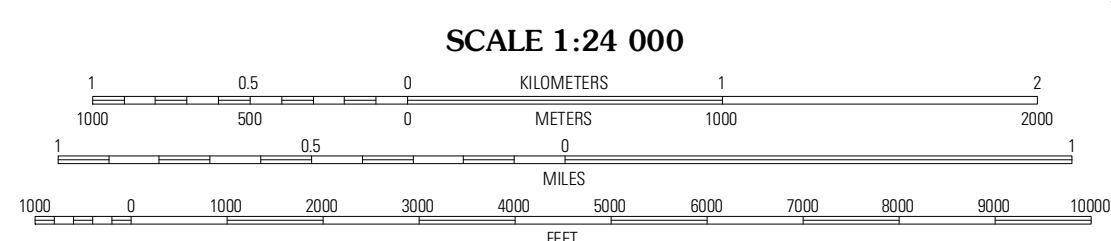
MARTHASVILLE QUADRANGLE  
MISSOURI-WARREN CO.  
7.5-MINUTE SERIES



Produced by the United States Geological Survey  
North American Datum of 1983 (NAD83)  
World Geodetic System of 1984 (WGS84). Projection and  
1 000-meter grid: Universal Transverse Mercator, Zone 15S  
10 000-foot ticks: Missouri Coordinate System of 1983 (east zone)

UTM GRID AND 2012 MAGNETIC NORTH  
DECLINATION AT CENTER OF SHEET

0° 24' N  
7 MILS  
1° 13' N  
22 MILS



CONTOUR INTERVAL 20 FEET  
NORTH AMERICAN VERTICAL DATUM OF 1988

This map was produced to conform with the  
National Geospatial Program US Topo Product Standard, 2011.  
A metadata file associated with this product is draft version 0.6.1



ROAD CLASSIFICATION

Interstate Route (thick red line)  
US Route (red line)  
Ramp (red line with blue triangle)  
State Route (thin red line)  
Local Road (grey line)  
4WD (dashed grey line)  
State Route (circle with number)

QUADRANGLE LOCATION

Warrenton	Wright City	Fortstell
Treboar	<b>Marthasville</b>	New Melle
New Haven	Washington West	Washington East

MARTHASVILLE, MO  
2012

ADJOINING 7.5 QUADRANGLES

Imagery.....N.A.I.P., June 2010  
Roads.....©2006-2011 TomTom  
Names.....GNSS, 2011  
Hydrography.....National Hydrography Dataset, 2010  
Contours.....National Elevation Dataset, 2007  
Boundaries.....Census, BWC, IBC, USGS, 1972 - 2010

U.S. National Grid  
100,000m Square ID

XC

Grid Zone Designation  
15S