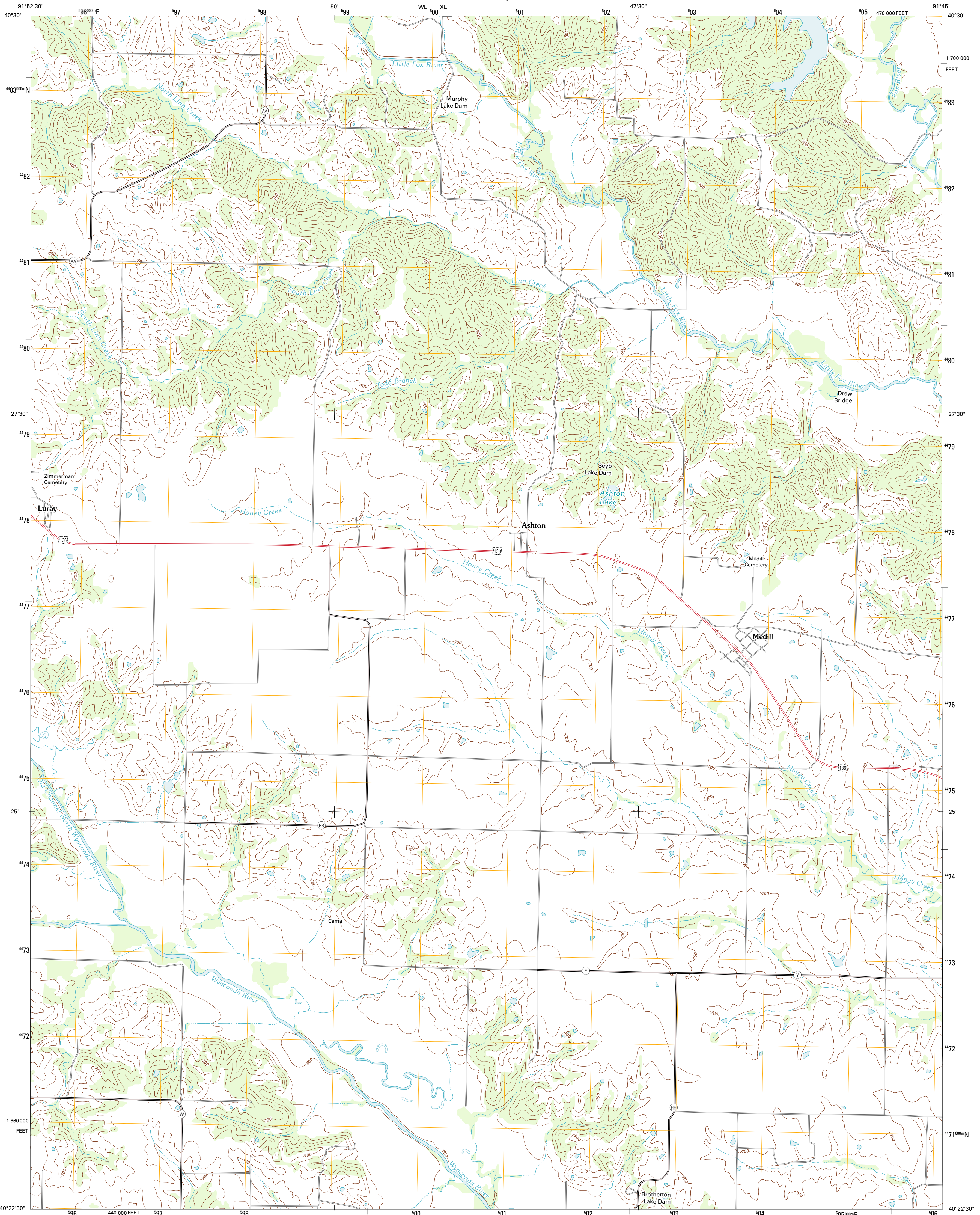




U.S. DEPARTMENT OF THE INTERIOR
U. S. GEOLOGICAL SURVEY

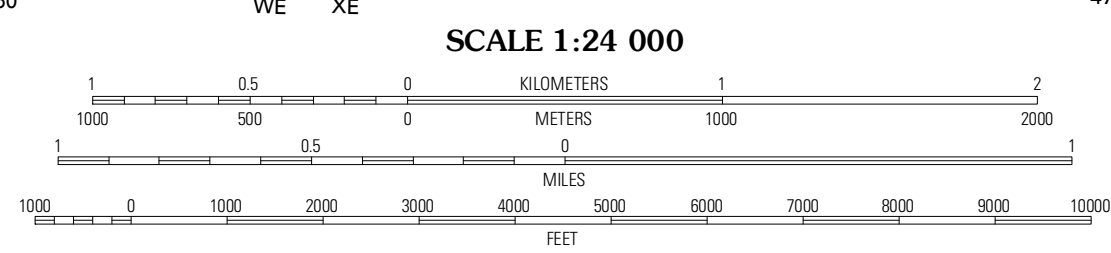
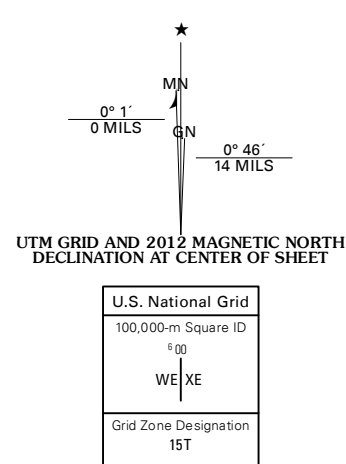


MEDILL QUADRANGLE
MISSOURI-CLARK CO.
7.5-MINUTE SERIES



Produced by the United States Geological Survey
North American Datum of 1983 (NAD83)
World Geodetic System of 1984 (WGS84). Projection and
1 000-meter grid: Universal Transverse Mercator, Zone 15T
10 000-foot ticks: Missouri Coordinate System of 1983 (east zone)

Imagery: N.A.P., June 2010
Roads: ©2006-2011 TomTom
Names: ©2006-2011 TomTom
Hydrography: National Hydrography Dataset, 2010
Contours: National Elevation Dataset, 2004
Boundaries: Census, IBWC, IBC, USGS, 1972 - 2010



CONTOUR INTERVAL 20 FEET
NORTH AMERICAN VERTICAL DATUM OF 1988

This map was produced to conform with the
National Geospatial Program US Topo Product Standard, 2011.
A metadata file associated with this product is draft version 0.6.1



MISSOURI

QUADRANGLE LOCATION

Mount Sterling	Anson	Croton
Wyconda	Medill	Kahoka
Colony	Nepper	Saint Patrick

ROAD CLASSIFICATION

Interstate Route
US Route
Ramp

State Route
Local Road
4WD

MEDILL, MO
2012

ADJOINING 7.5' QUADRANGLES