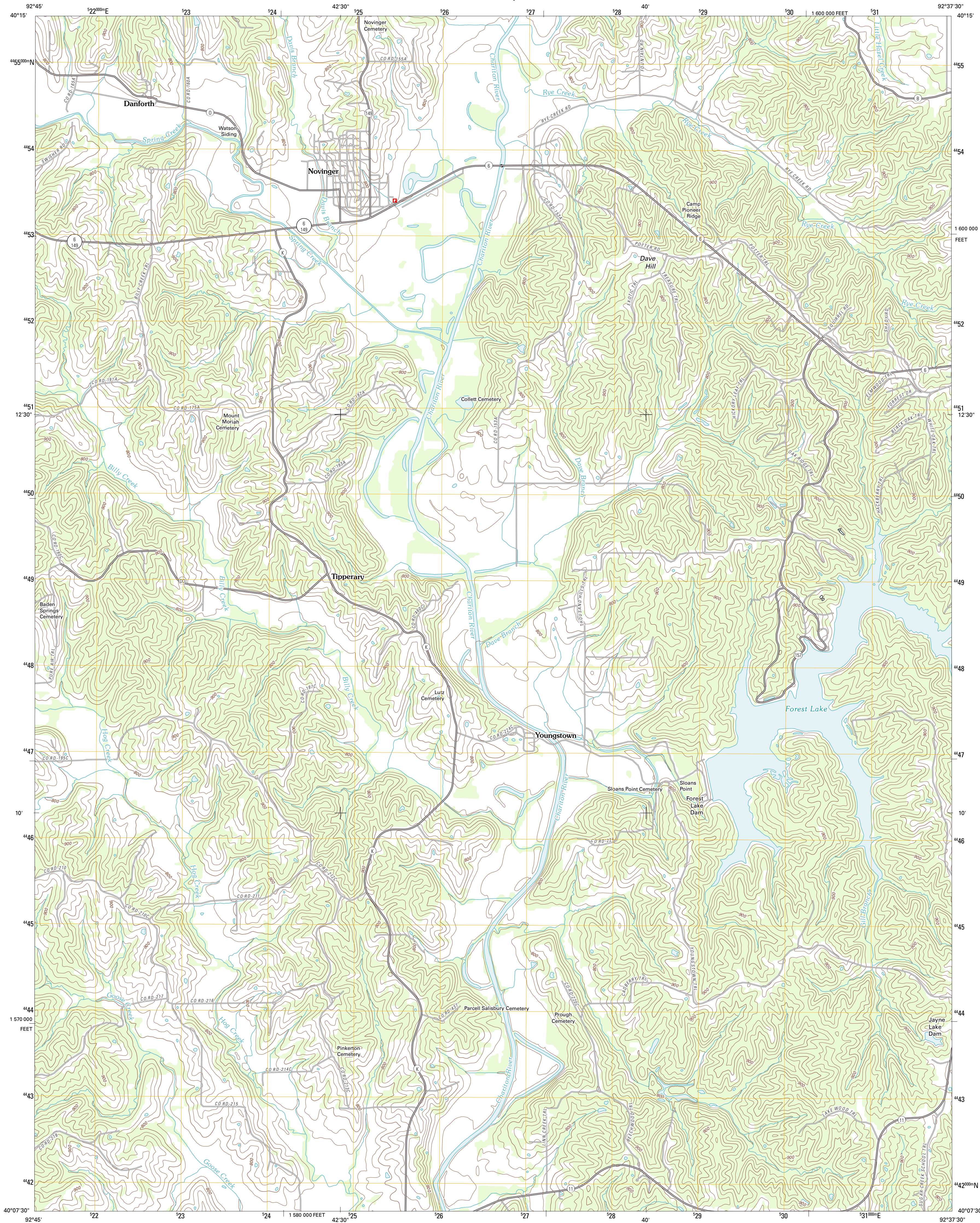




U.S. DEPARTMENT OF THE INTERIOR
U. S. GEOLOGICAL SURVEY



NOVINGER QUADRANGLE
MISSOURI-ADAIR CO.
7.5-MINUTE SERIES



Produced by the United States Geological Survey
North American Datum of 1983 (NAD83)
World Geodetic System of 1984 (WGS84), Projection and
1 000-meter grid: Universal Transverse Mercator, Zone 15T
10 000-foot ticks: Missouri Coordinate System of 1983
(central zone)

Imagery.....NAIP, June 2010
Roads.....©2006-2011 TomTom
Names.....©2006-2011 TomTom
Hydrography.....National Hydrography Dataset, 2010
Contours.....National Elevation Dataset, 2004
Boundaries.....Census, IBWC, IBC, USGS, 1972 - 2010

UTM GRID AND 2012 MAGNETIC NORTH
DECLINATION AT CENTER OF SHEET

U.S. National Grid
100,000-m Square ID
WE
Grid Zone Designation
15T

SCALE 1:24 000

1 000 000 FEET
1 580 000 FEET
2 160 000 FEET

1 000 000 METERS
1 580 000 METERS
2 160 000 METERS

1 000 000 FEET
1 580 000 FEET
2 160 000 FEET

CONTOUR INTERVAL 20 FEET
NORTH AMERICAN VERTICAL DATUM OF 1988

This map was produced to conform with the
National Geospatial Program US Topo Product Standard, 2011.
A metadata file associated with this product is draft version 0.6.1



ADJOINING 7.5' QUADRANGLES		
Stahl	Connelville	Greentop
Pure Air	Novinger	Kirksville
Nind	Gifford	Millard

ROAD CLASSIFICATION

Interstate Route
US Route
Ramp

State Route
Local Road
4WD

US Route
State Route

NOVINGER, MO
2012