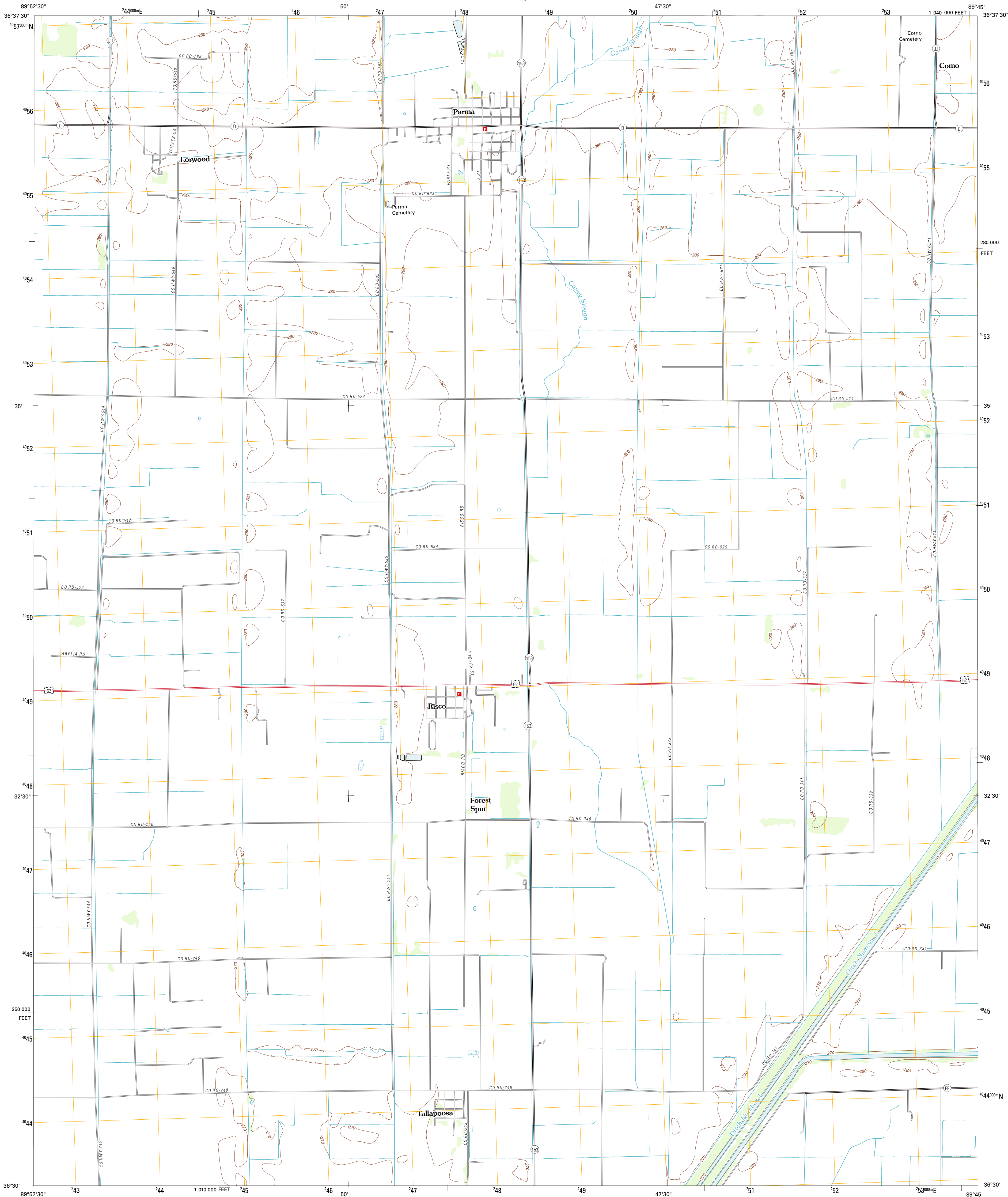




U.S. DEPARTMENT OF THE INTERIOR
U. S. GEOLOGICAL SURVEY

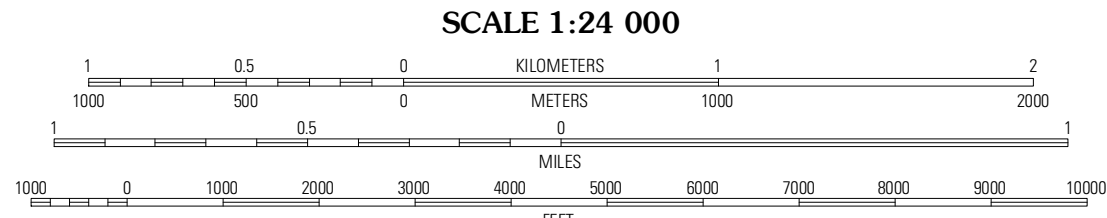
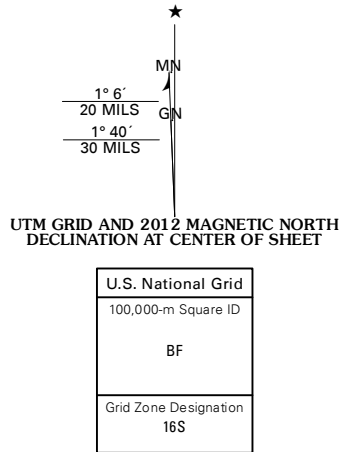


PARMA QUADRANGLE
MISSOURI-NEW MADRID CO.
7.5-MINUTE SERIES



Produced by the United States Geological Survey
North American Datum of 1983 (NAD83)
World Geodetic System of 1984 (WGS84). Projection and
1 000-meter grid: Universal Transverse Mercator, Zone 16S
10 000-foot ticks: Missouri Coordinate System of 1983 (east zone)

Imagery.....NAIP, June 2010
Roads.....©2006-2011 TomTom
Names.....GNS, 2011
Hydrography.....National Hydrography Dataset, 2010
Contours.....National Elevation Dataset, 2006
Boundaries.....Census, IBWC, IBC, USGS, 1972 - 2010



CONTOUR INTERVAL 10 FEET
NORTH AMERICAN VERTICAL DATUM OF 1988
This map was produced to conform with the
National Geospatial Program US Topo Product Standard, 2011.
A metadata file associated with this product is draft version 0.6.1



ADJOINING 7.5' QUADRANGLES		
Berne	Hills Store	Charter Oak
Malden	Parma	Catron
Gideon	Bookerton	Portageville

ROAD CLASSIFICATION		
Interstate Route	State Route	US Route
US Route	Local Road	4WD
Ramp		

PARMA, MO
2012