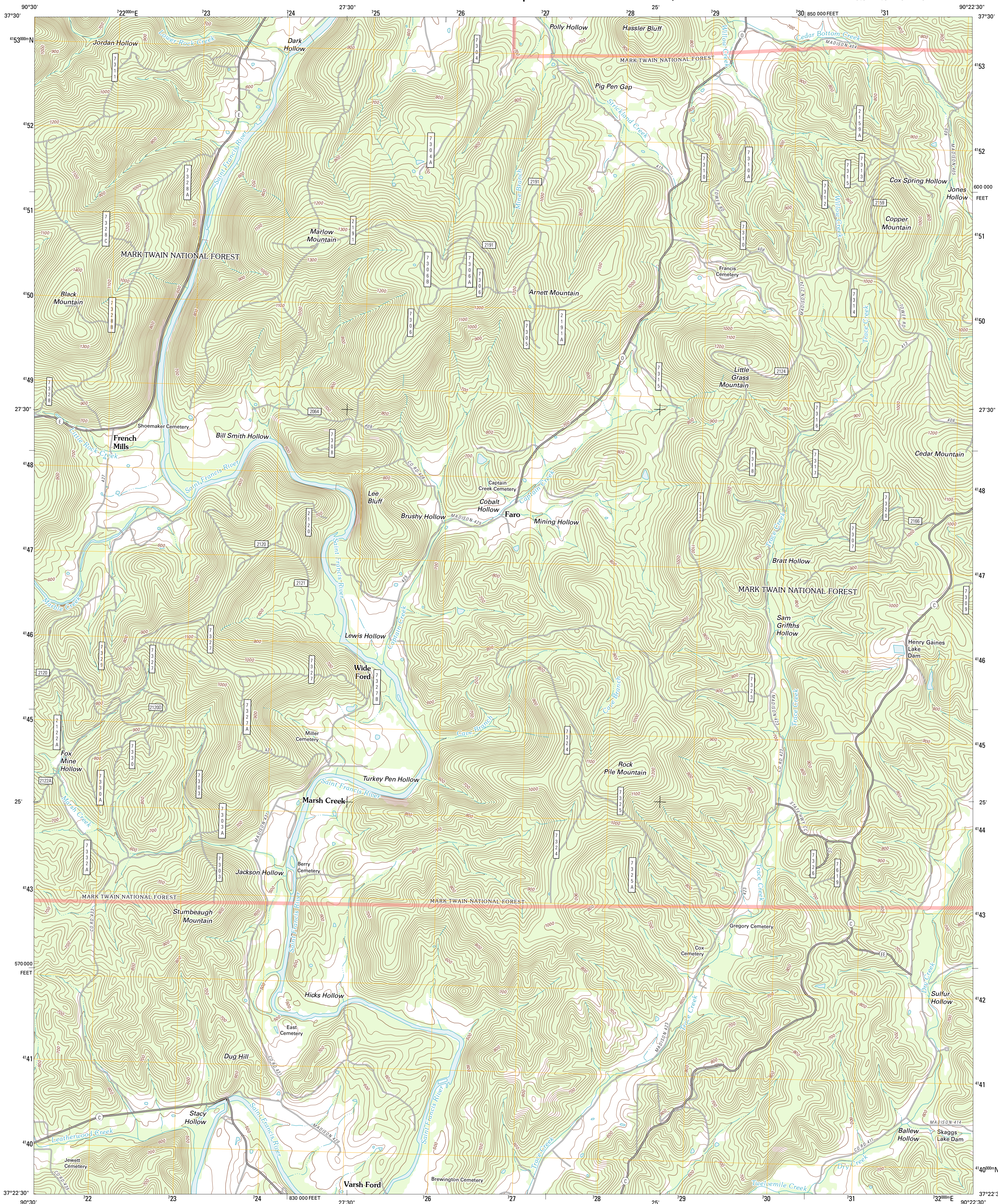




U.S. DEPARTMENT OF THE INTERIOR
U. S. GEOLOGICAL SURVEY

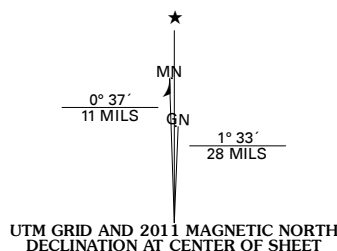


ROCK PILE MOUNTAIN QUADRANGLE
MISSOURI-MADISON CO.
7.5-MINUTE SERIES

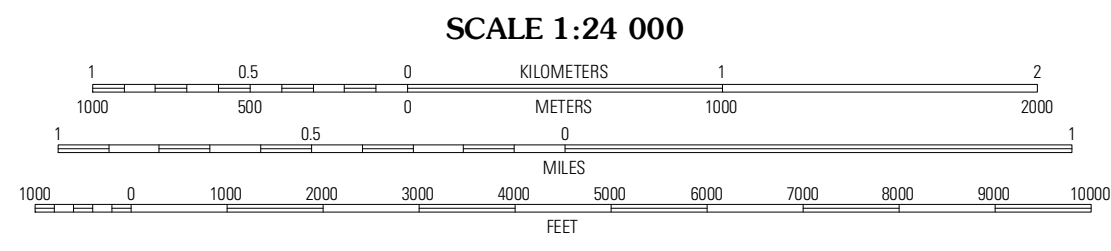


Produced by the United States Geological Survey
North American Datum of 1983 (NAD83)
World Geodetic System of 1984 (WGS84) Projection and
1000-meter grid: Universal Transverse Mercator, Zone 15S
10 000-foot ticks: Missouri Coordinate System of 1983 (east zone)

Imagery.....NAIP, June 2010 - July 2010
Roads.....©2006-2011 TomTom
Roads within US Forest Service Lands.....FS Topo Data
with limited Forest Service updates, 2009
Names.....GNIS, 2011
Hydrography.....National Hydrography Dataset, 2010
Contours.....National Elevation Dataset, 2008
Boundaries.....Census, IBWC, IBC, USGS, 1972 - 2010



U.S. National Grid
100,000m Square ID
18B
Grid Zone Designation
15S



CONTOUR INTERVAL 20 FEET
NORTH AMERICAN VERTICAL DATUM OF 1988
This map was produced to conform with the
National Geospatial Program US Topo Product Standard, 2011.
A metadata file associated with this product is draft version 0.6.1



QUADRANGLE LOCATION		
Lake Killamey	Rhodes Mountain	Fredericktown
Des Arc NE	Rock Pile Mountain	Cherokee Pass
Brunot	Coldwater	Cascade

ROAD CLASSIFICATION

Interstate Route	State Route
US Route	Local Road
Ramp	4WD

Legend:
Interstate Route (thick red line)
US Route (red line)
Ramp (red line with cross-ticks)
FS Primary Route (thick black line)
US Route (thin black line)
FS Passenger Route (thin black line with cross-ticks)
State Route (thin black line)
FS High Clearance Route (thin black line with cross-ticks)

Check with local Forest Service unit for current travel conditions and restrictions.

ROCK PILE MOUNTAIN, MO
2011