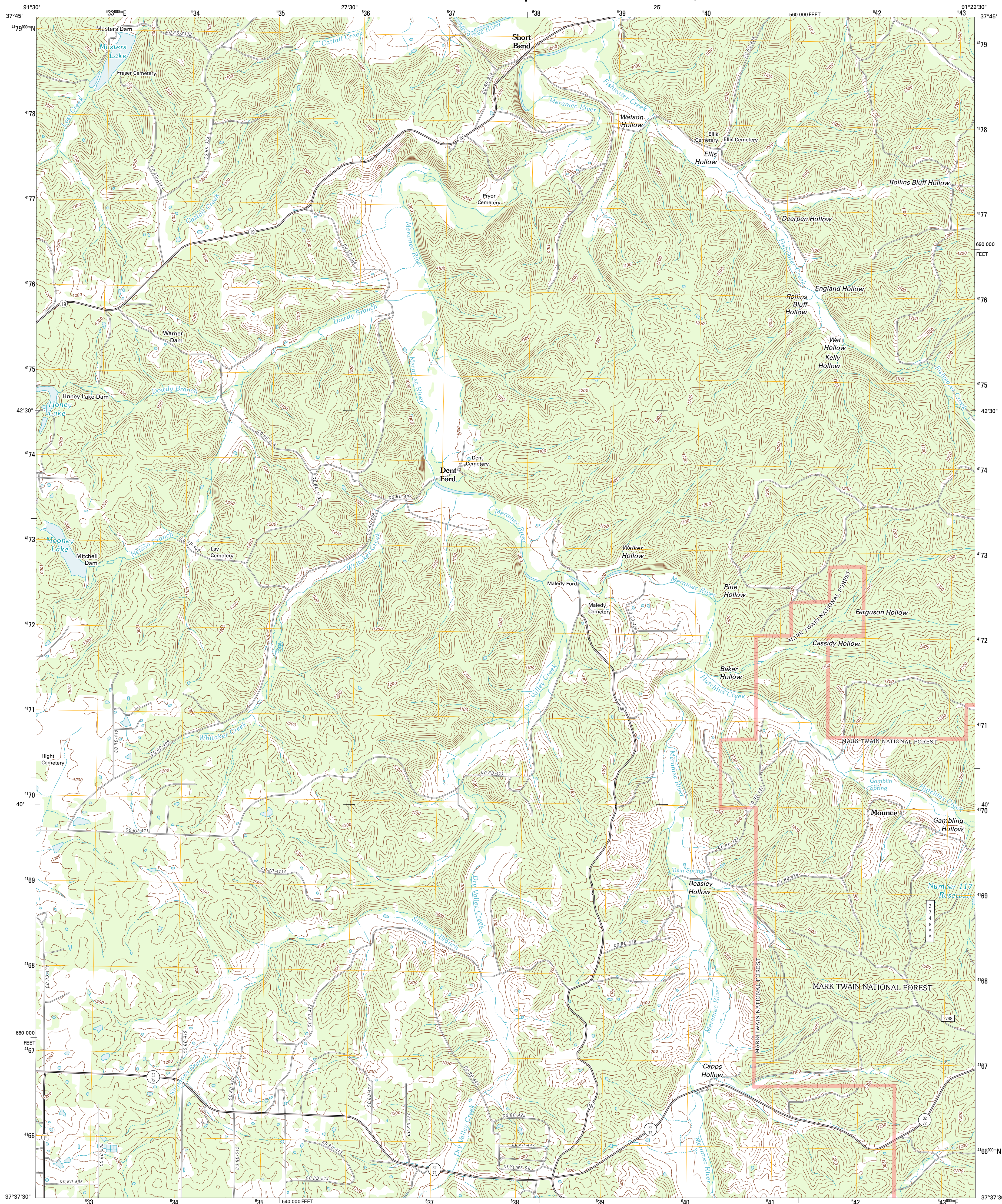




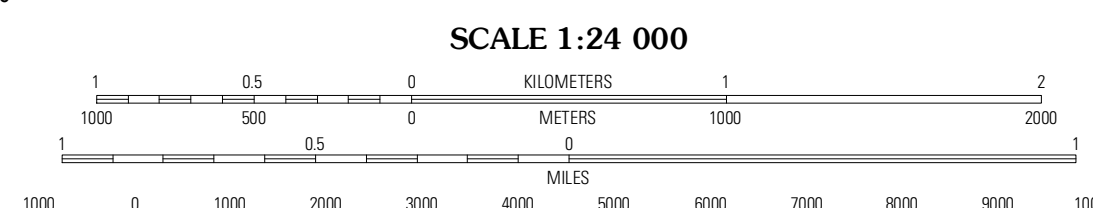
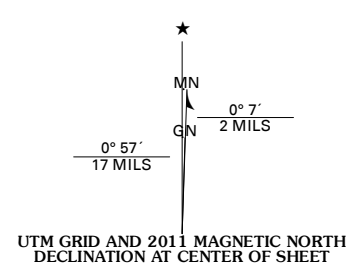
U.S. DEPARTMENT OF THE INTERIOR
U. S. GEOLOGICAL SURVEY



SHORT BEND QUADRANGLE
MISSOURI-DENT CO.
7.5-MINUTE SERIES



Produced by the United States Geological Survey
North American Datum of 1983 (NAD83)
World Geodetic System of 1984 (WGS84). Projection and
1 000-meter grid: Universal Transverse Mercator, Zone 15S
10 000-foot ticks: Missouri Coordinate System of 1983 (east zone)



QUADRANGLE LOCATION

Seaton	Cook Station	Cherryville
Salem	Short Bend	Hoves Hill Spring
Darien	Doss	Stone Hill

ROAD CLASSIFICATION

	Interstate Route		State Route
	US Route		Local Road
	Ramp		4WD
	FS Primary Route		FS Passenger Route
	FS High Clearance Route		

Check with local Forest Service unit for current travel conditions and restrictions.

Imagery: NAIIP, July 2010
Roads: ©2006-2011 TomTom
Roads within US Forest Service Lands: FS Topo Data with limited Forest Service updates, 2009
Names: GNS, 2011
Hydrography: National Hydrography Dataset, 2010
Contours: National Elevation Dataset, 2006
Boundaries: Census, IBWC, IBC, USGS, 1972 - 2010

U.S. National Grid

100,000-m Square ID	XB
Grid Zone Designation	15S

CONTOUR INTERVAL 20 FEET
NORTH AMERICAN VERTICAL DATUM OF 1988

This map was produced to conform with the National Geospatial Program US Topo Product Standard, 2011. A metadata file associated with this product is draft version 0.6.1

SHORT BEND, MO
2011

ADJOINING 7.5 QUADRANGLES