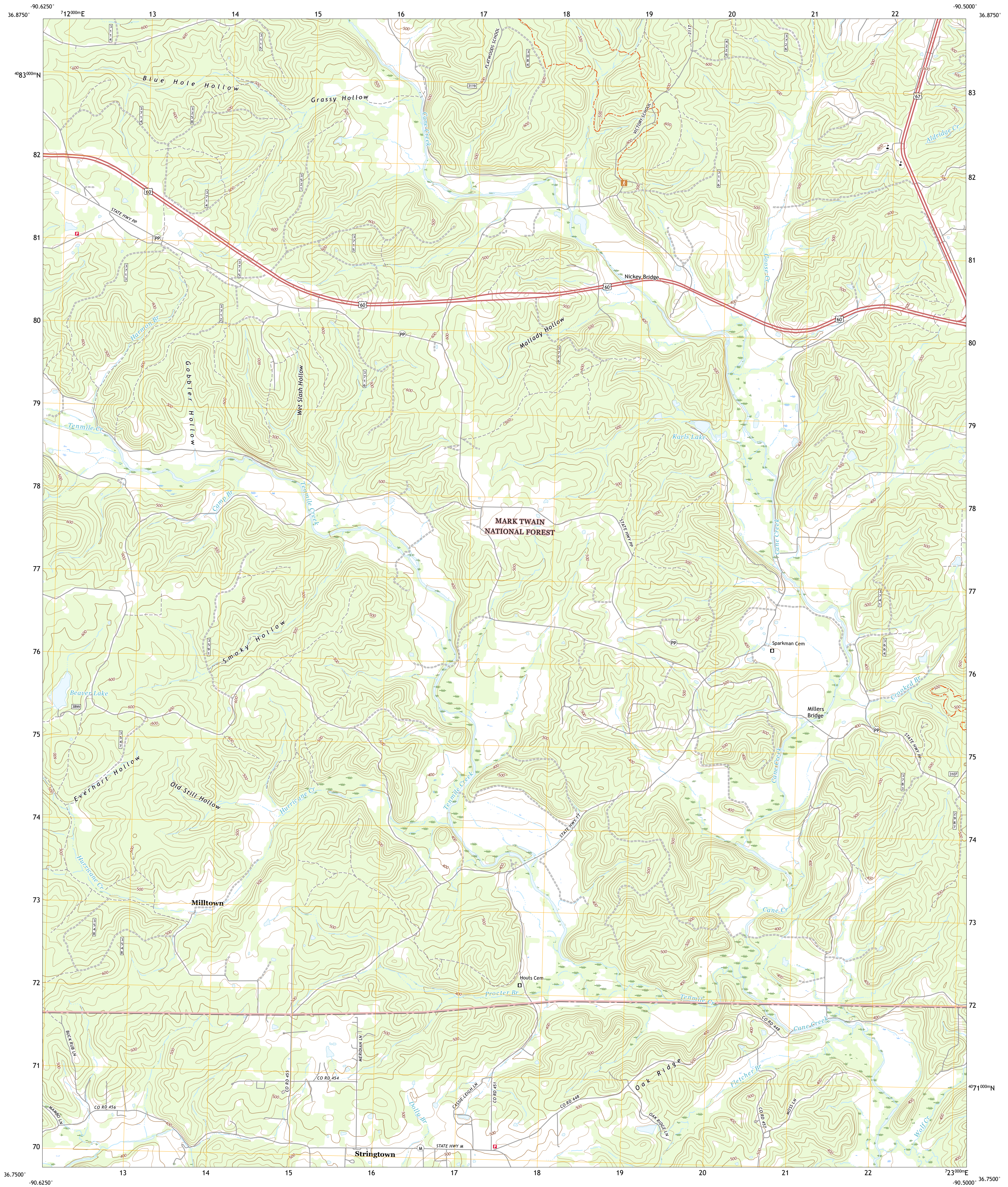




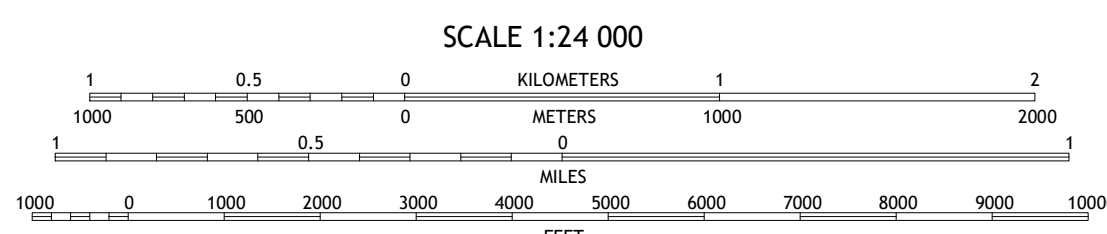
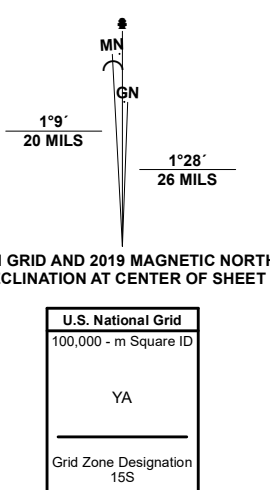
U.S. DEPARTMENT OF THE INTERIOR  
U.S. GEOLOGICAL SURVEY



STRINGTOWN QUADRANGLE  
MISSOURI - BUTLER COUNTY  
7.5-MINUTE SERIES



Produced by the United States Geological Survey  
North American Datum of 1983 (NAD83)  
World Geodetic System of 1984 (WGS84) Projection and  
1 000 meter grid/Universal Transverse Mercator, Zone 15S  
This map is not a legal document. Boundaries may be  
generalized for this map scale. Private lands within government  
reservations may not be shown. Obtain permission before  
entering private lands.  
Imagery:.....NAIP, June 2020 - July 2020  
Roads:.....U.S. Census Bureau, 2016  
Roads within US Forest Service Lands:.....FS Topo Data  
with limited Forest Service updates, 2014 - 2017  
Names:.....National Hydrography Dataset, 2001 - 2019  
Hydrography:.....National Hydrography Dataset, 2001 - 2019  
Contours:.....National Elevation Dataset, 2001  
Boundaries:.....Multiple sources; see metadata file 2017 - 2019  
Public Land Survey System:.....BLM, 2020  
Wetlands:.....FWS National Wetlands Inventory Not Available



ADJOINING QUADRANGLES

1	2	3
4	5	
6	7	8

- 1 Ellinsore
- 2 Williamsville
- 3 Hendrickson
- 4 Hagan Hollow
- 5 Poplar Bluff
- 6 Flatwoods
- 7 Fairdeal
- 8 Harvett

ROAD CLASSIFICATION

Expressway	Local Connector
Secondary Hwy	Local Road
Ramp	4WD
Interstate Route	State Route
FS Primary Route	FS Passenger Route
	FS High Clearance Route

Check with local Forest Service unit for current travel conditions and restrictions.

STRINGTOWN, MO  
2021

