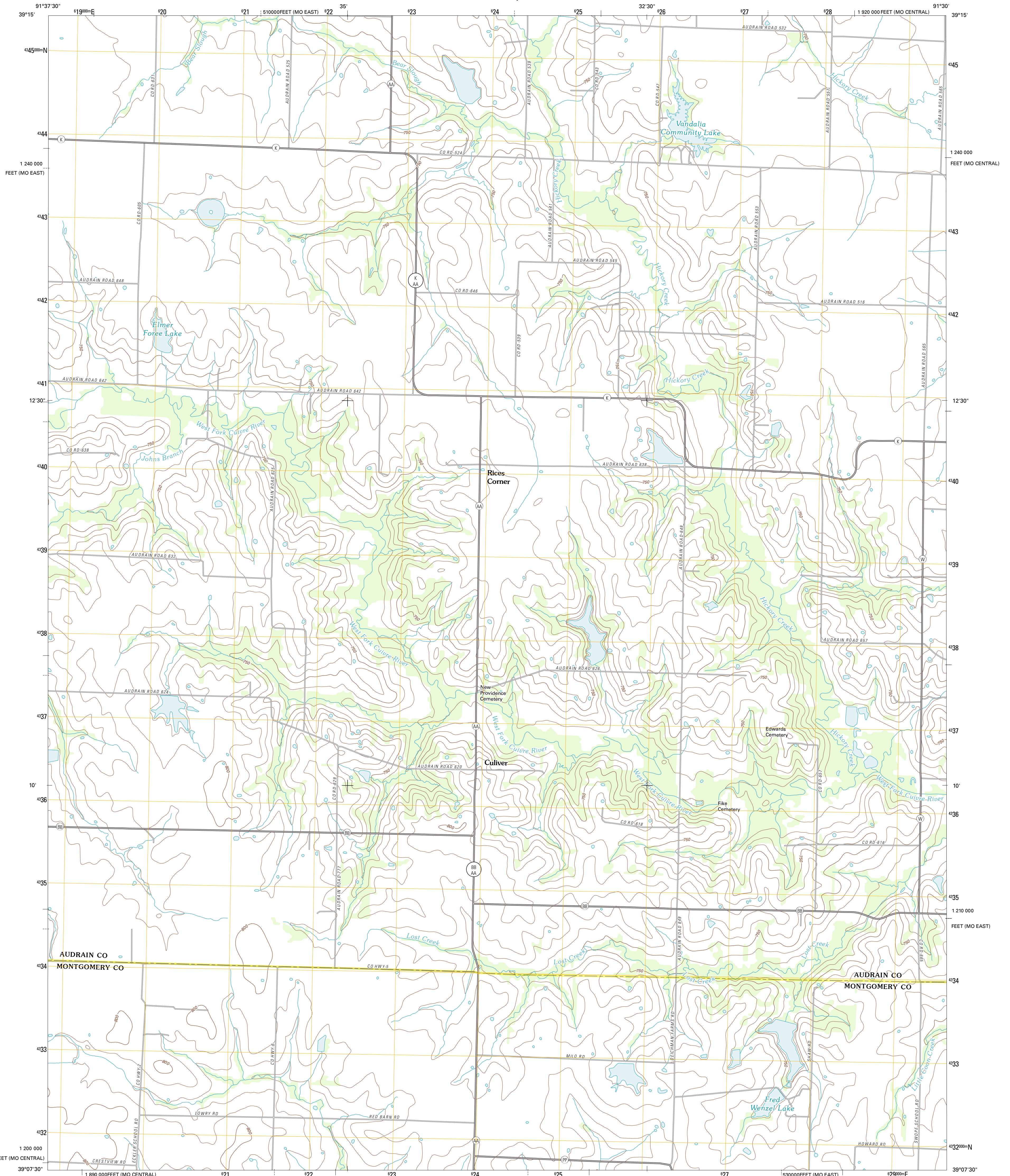




U.S. DEPARTMENT OF THE INTERIOR
U. S. GEOLOGICAL SURVEY



VANDALIA LAKE QUADRANGLE
MISSOURI
7.5-MINUTE SERIES

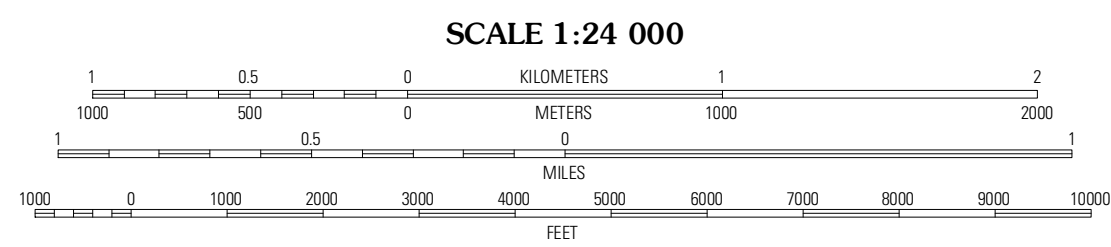


Produced by the United States Geological Survey
North American Datum of 1983 (NAD83)
World Geodetic System of 1984 (WGS84). Projection and
1 000-meter grid: Universal Transverse Mercator, Zone 15S
10 000-foot ticks: Missouri Coordinate System of 1983
(central and east zones)

Imagery: N.A.P., June 2010
Roads: ©2006-2011 TomTom
Names: GNS, 2011
Hydrography: National Hydrography Dataset, 2010
Contours: National Elevation Dataset, 2004
Boundaries: Census, IBWC, IBC, USGS, 1972 - 2010

UTM GRID AND 2012 MAGNETIC NORTH
DECLINATION AT CENTER OF SHEET

U.S. National Grid
100,000-m Square ID
XD
Grid Zone Designation
18S



CONTOUR INTERVAL 10 FEET
NORTH AMERICAN VERTICAL DATUM OF 1988

This map was produced to conform with the
National Geospatial Program US Topo Product Standard, 2011.
A metadata file associated with this product is draft version 0.6.1



QUADRANGLE LOCATION

Hutchison	Ferber	Vandalia
Ladonia	Vandalia Lake	Middletown
Martinsburg	Wellsville	Bull

ADJOINING 7.5' QUADRANGLES

ROAD CLASSIFICATION

Interstate Route	State Road
US Route	Local Road
Ramp	4WD

VANDALIA LAKE, MO
2012