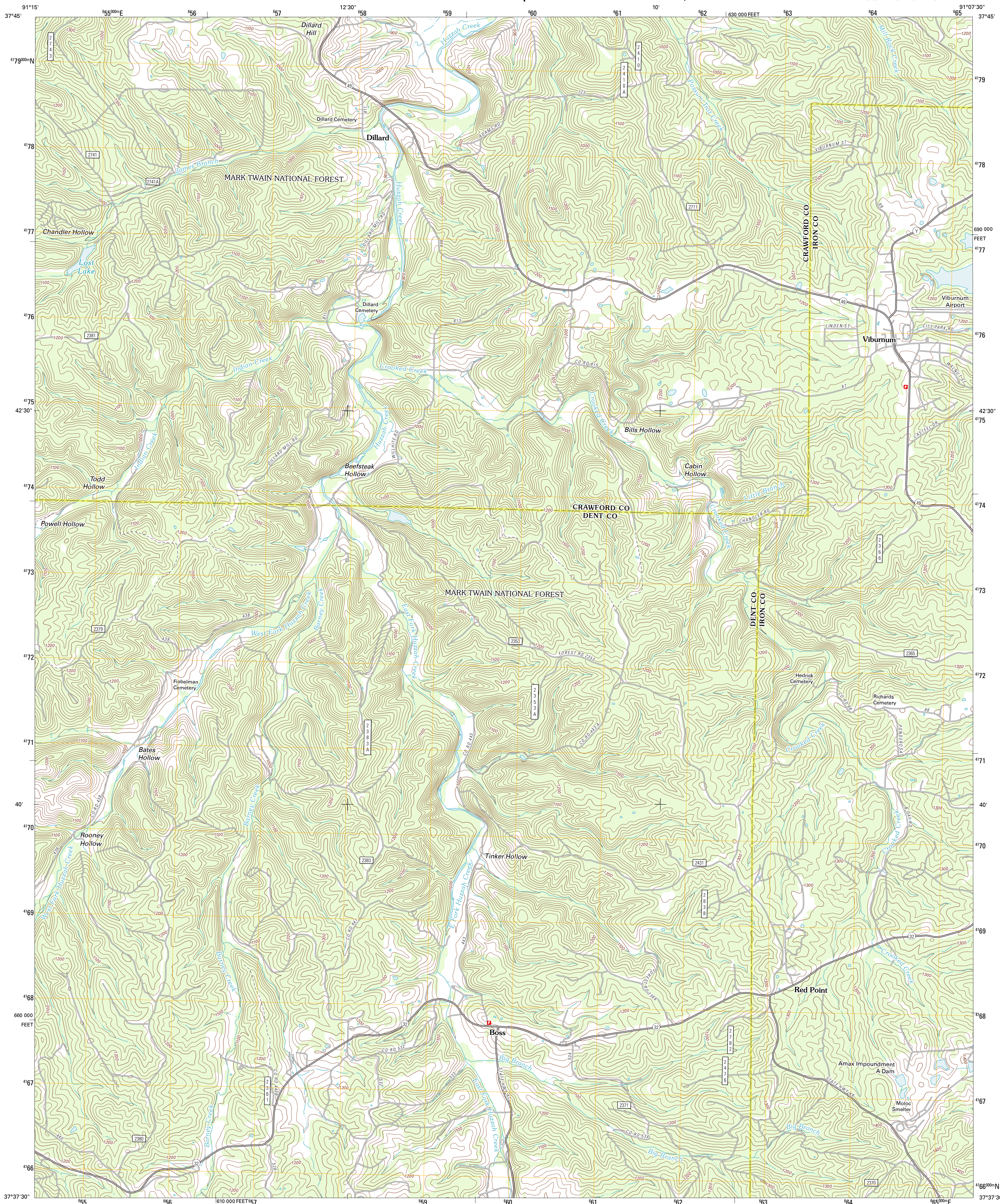




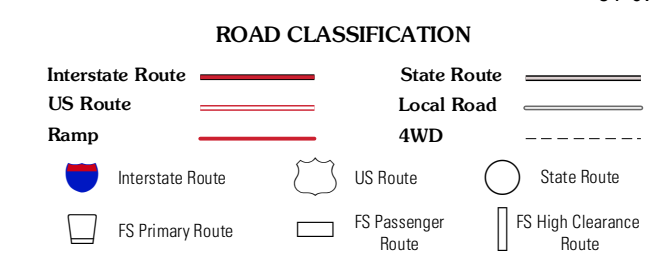
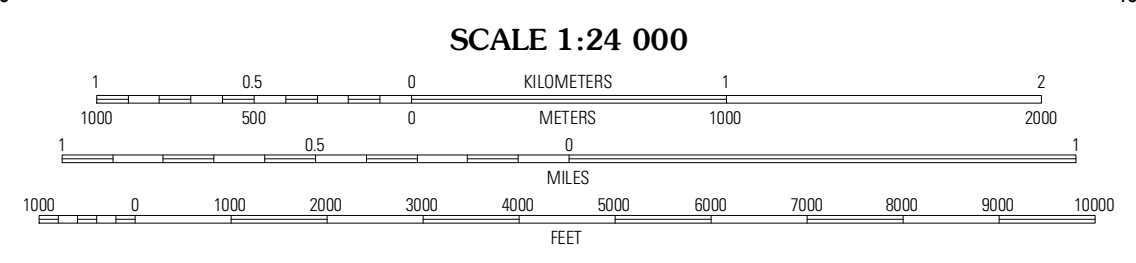
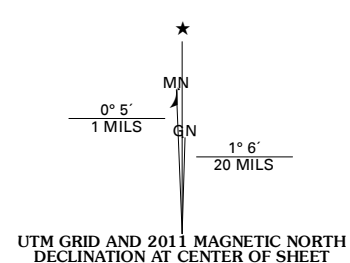
U.S. DEPARTMENT OF THE INTERIOR
U. S. GEOLOGICAL SURVEY



VIBURNUM WEST QUADRANGLE
MISSOURI
7.5-MINUTE SERIES



Produced by the United States Geological Survey
North American Datum of 1983 (NAD83)
World Geodetic System of 1984 (WGS84). Projection and
1 000-meter grid: Universal Transverse Mercator, Zone 15S
10 000-foot ticks: Missouri Coordinate System of 1983 (east
zone)



Imagery.....NAP, July 2010
Roads.....©2006-2011 TomTom
Roads within US Forest Service Lands.....FS Topo Data
with limited Forest Service updates, 2009
Names.....GNIS, 2011
Hydrography.....National Hydrography Dataset, 2010
Contours.....National Elevation Dataset, 2006
Boundaries.....Census, IBWC, IBC, USGS, 1972 - 2010

U.S. National Grid
100,000-m Square ID
XB
Grid Zone Designation
15S

CONTOUR INTERVAL 20 FEET
NORTH AMERICAN VERTICAL DATUM OF 1988
This map was produced to conform with the
National Geospatial Program US Topo Product Standard, 2011.
A metadata file associated with this product is draft version 0.6.1

QUADRANGLE LOCATION

Cherryville	Davisville	Courtois
Hoves Mill Spring	Viburnum West	Viburnum East
Stone Hill	Greeky	Oates

ADJOINING 7.5 QUADRANGLES

Check with local Forest Service unit
for current travel conditions and restrictions.

VIBURNUM WEST, MO
2011