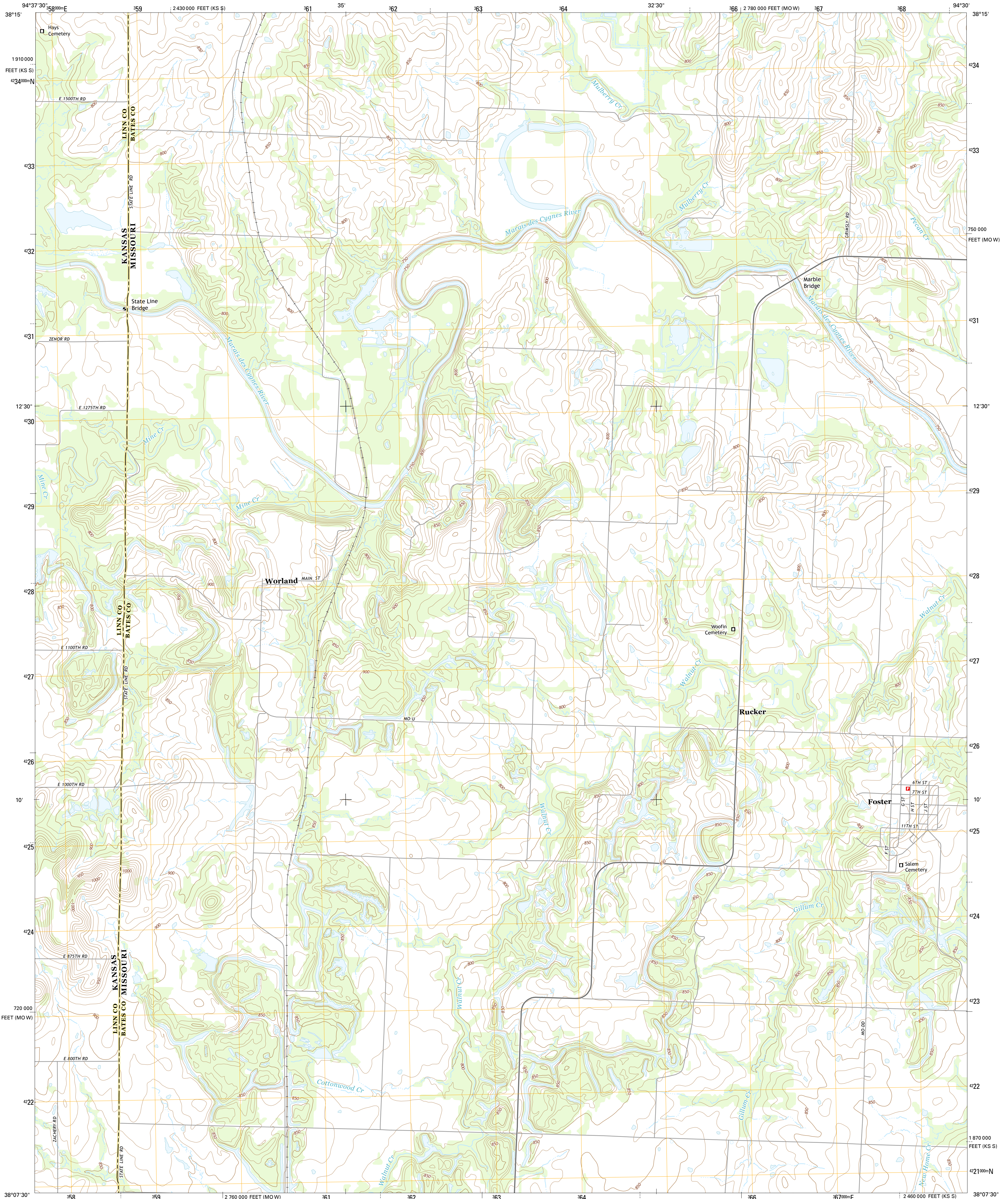




U.S. DEPARTMENT OF THE INTERIOR  
U.S. GEOLOGICAL SURVEY



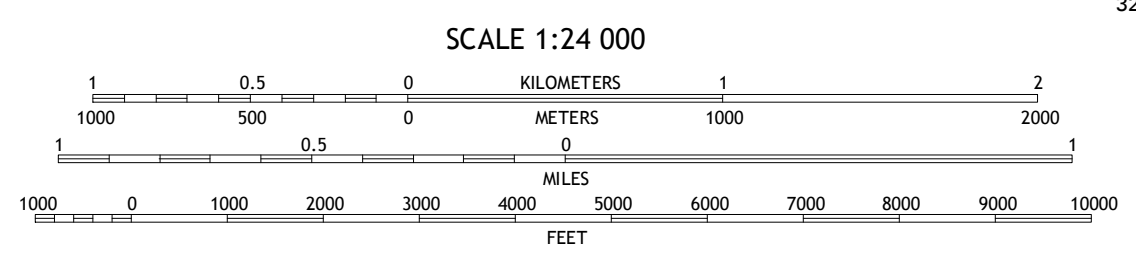
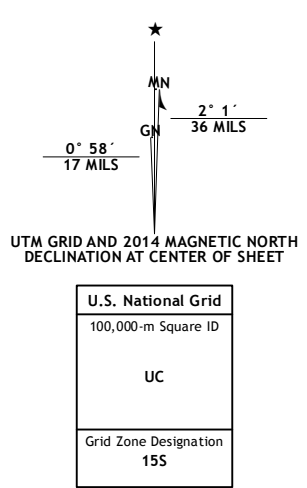
WORLAND QUADRANGLE  
MISSOURI-KANSAS  
7.5-MINUTE SERIES



**Produced by the United States Geological Survey**  
 North American Datum of 1983 (NAD83)  
 World Geodetic System of 1984 (WGS84) Projection and  
 1 000-meter grid: Universal Transverse Mercator, Zone 15S  
 10 000-foot ticks: Missouri Coordinate System of 1983 (west  
 zone), Kansas Coordinate System of 1983 (south zone)

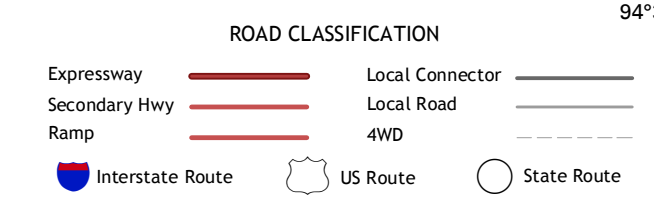
This map is not a legal document. Boundaries may be  
 generalized for this map scale. Private lands within government  
 reservations may not be shown. Obtain permission before  
 entering private lands.

Imagery.....N.A.P. June 2012  
 Roads.....HERE, ©2013  
 Names.....G.N.S., 2013  
 Hydrography.....National Hydrography Dataset, 2012  
 Contours.....National Elevation Dataset, 2005  
 Boundaries.....Multiple sources; see metadata file 1972-2014  
 Public Land Survey System.....BLM, 2011



CONTOUR INTERVAL 10 FEET  
 NORTH AMERICAN VERTICAL DATUM OF 1988

This map was produced to conform with the  
 National Geospatial Program US Topo Product Standard, 2011.  
 A metadata file associated with this product is draft version 0.6.18



1	2	3
4	5	6
7	8	

ADJOINING QUADRANGLES

- 1 Bolcourt
- 2 Amoret
- 3 Virginia
- 4 Pleasanton
- 5 New Home
- 6 Prescott
- 7 Home
- 8 Sprague

WORLAND, MO-KS  
 2014

