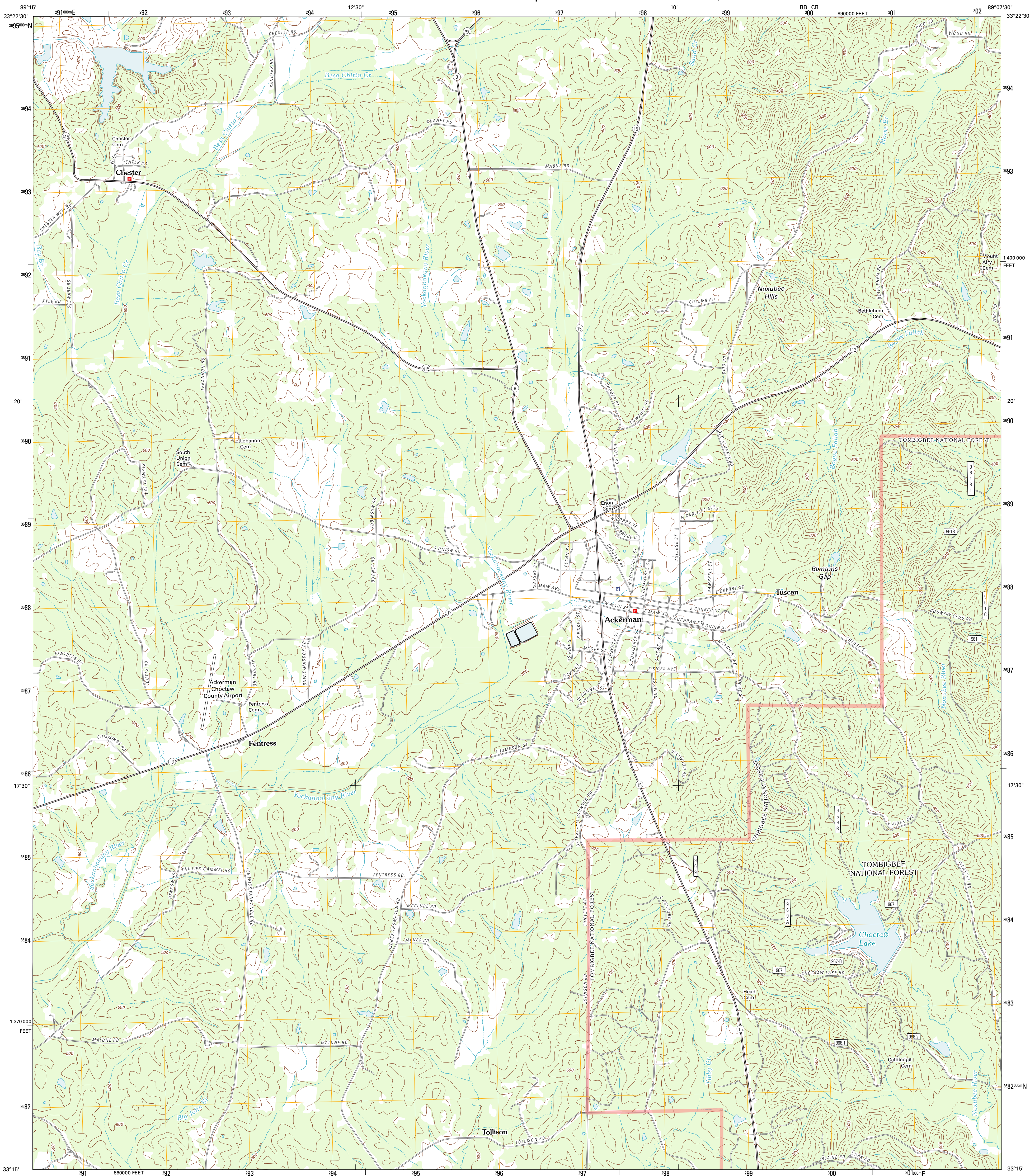




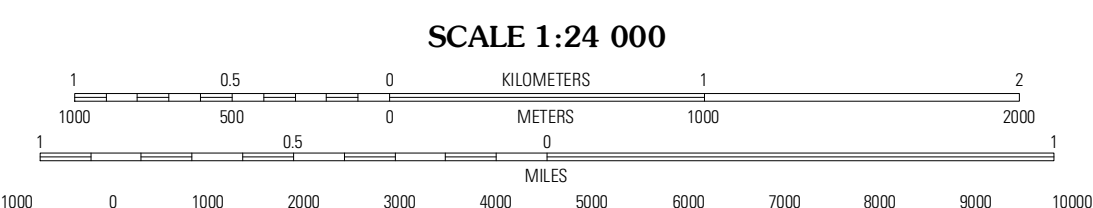
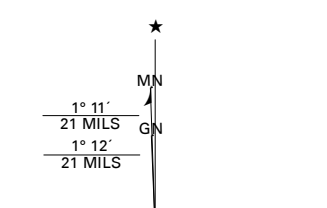
U.S. DEPARTMENT OF THE INTERIOR
U. S. GEOLOGICAL SURVEY



ACKERMAN QUADRANGLE
MISSISSIPPI-CHOCTAW CO.
7.5-MINUTE SERIES



Produced by the United States Geological Survey
North American Datum of 1983 (NAD83)
World Geodetic System of 1984 (WGS84). Projection and
1 000-meter grid: Universal Transverse Mercator, Zone 16S
10 000-foot ticks: Mississippi Coordinate System of 1983
(east zone)



ROAD CLASSIFICATION

Interstate Route (Red line with shield)
US Route (Red line with shield)
Ramp (Red line with arrow)

State Route (Black line with shield)
Local Road (Black line)
4WD (Black line with cross-hatch)

FS Primary Route (Blue line with shield)
FS Passenger Route (Blue line with shield)
FS High Clearance Route (Blue line with shield)

Imagery:.....N.A.I.P., June 2010
Roads:.....©2006-2011 TomTom
Roads within US Forest Service Lands.....FS Topo Data
with limited Forest Service updates, 2009
Names:.....GNIS, 2011
Hydrography:.....National Hydrography Dataset, 2010
Contours:.....National Elevation Dataset, 2008
Boundaries:.....Census, IBWC, IBC, USGS, 1972 - 2010

U.S. National Grid
100,000m Square ID
10
BB CB
Grid Zone Designation
16S

CONTOUR INTERVAL 20 FEET
NORTH AMERICAN VERTICAL DATUM OF 1988

This map was produced to conform with the
National Geospatial Program US Topo Product Standard, 2011.
A metadata file associated with this product is draft version 0.6.2

QUADRANGLE LOCATION

Tomolon	Reform	Double Springs
Weir	Ackerman	Sturgis
McCool	Highpoint	Louisville North

ADJOINING 7.5' QUADRANGLES

Check with local Forest Service unit for current travel conditions and restrictions.

ACKERMAN, MS
2012