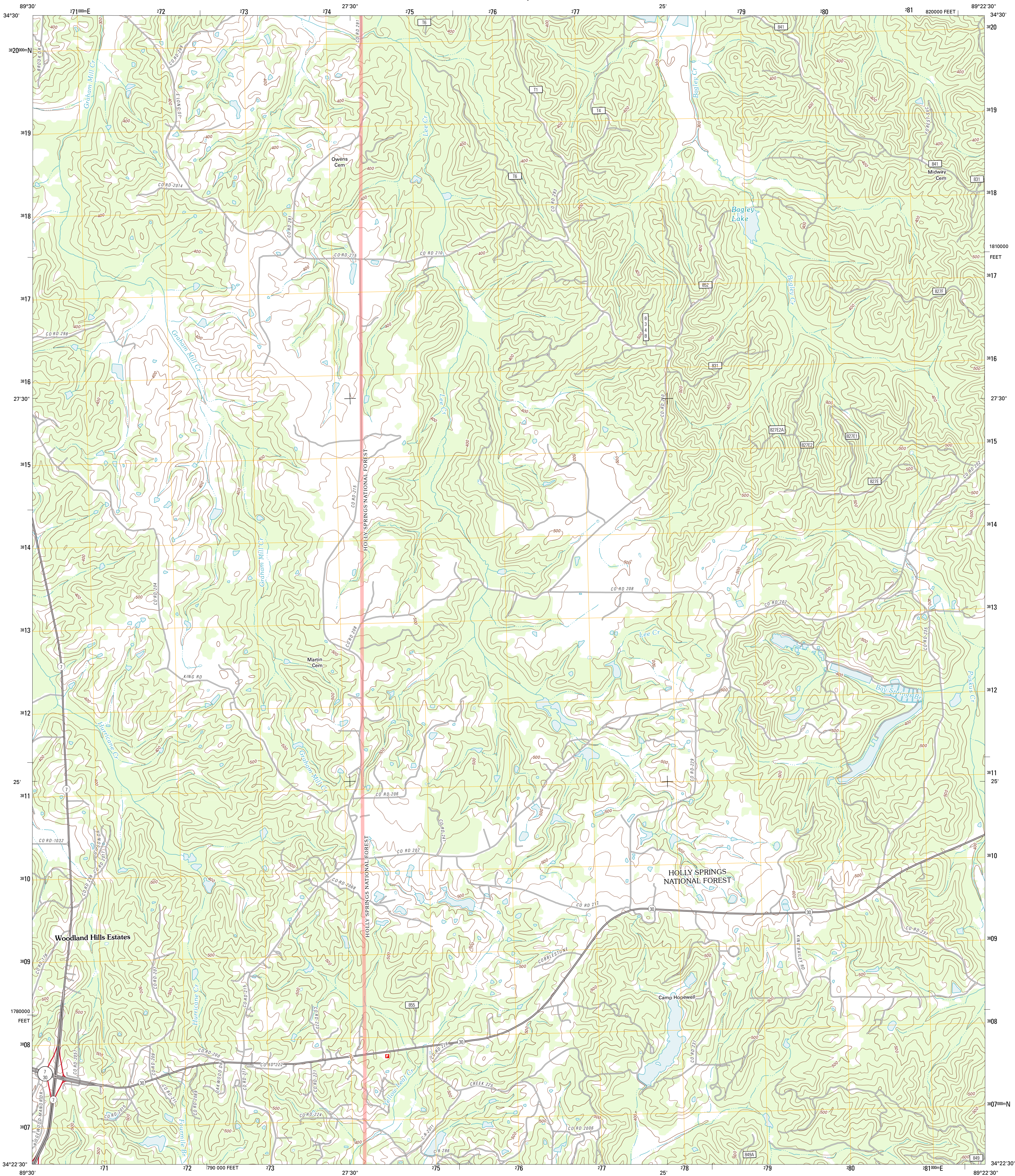




U.S. DEPARTMENT OF THE INTERIOR
U. S. GEOLOGICAL SURVEY



BAGLEY LAKE QUADRANGLE
MISSISSIPPI-LAFAYETTE CO.
7.5-MINUTE SERIES

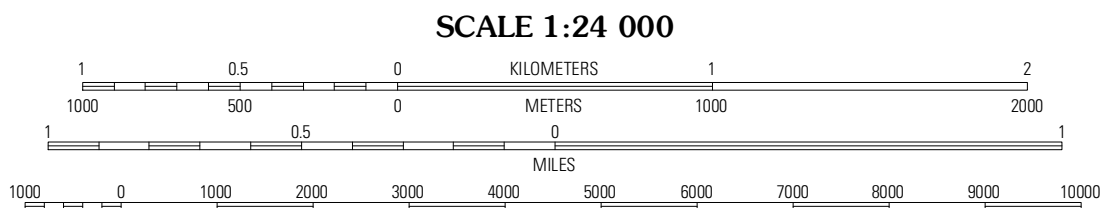


Produced by the United States Geological Survey
North American Datum of 1983 (NAD83)
World Geodetic System of 1984 (WGS84). Projection and
1 000-meter grid: Universal Transverse Mercator, Zone 16S
10 000-foot ticks: Mississippi Coordinate System of 1983
(east zone)

Imagery.....NAIP, May 2010 - July 2010
Roads.....©2006-2011 TomTom
Roads within US Forest Service Lands.....FSTopo Data
with limited Forest Service updates, 2009
Names.....©GNIS, 2011
Hydrography.....National Hydrography Dataset, 2010
Contours.....National Elevation Dataset, 2008
Boundaries.....Census, IBWC, IBC, USGS, 1972 - 2010

UTM GRID AND 2012 MAGNETIC NORTH
DECLINATION AT CENTER OF SHEET

U.S. National Grid
100,000-m Square ID
8D
Grid Zone Designation
16S



CONTOUR INTERVAL 20 FEET
NORTH AMERICAN VERTICAL DATUM OF 1988

This map was produced to conform with the
National Geospatial Program US Topo Product Standard, 2011.
A metadata file associated with this product is draft version 0.6.2



QUADRANGLE LOCATION		
Laws Hill	Malone	Bethlehem
Oxford North	Bagley Lake	Puskus Lake
Oxford South	Yocoma	Denmark

ROAD CLASSIFICATION

Interstate Route	State Route
US Route	Local Road
Ramp	4WD

Legend for road types:
Interstate Route (thick red line)
US Route (red line)
Ramp (red line with blue triangle)
FS Primary Route (red line with white square)
US Route (thin red line)
FS Passenger Route (thin red line with white square)
State Route (thin red line)
FS High Clearance Route (thin red line with white square)

Check with local Forest Service unit
for current travel conditions and restrictions.

BAGLEY LAKE, MS
2012