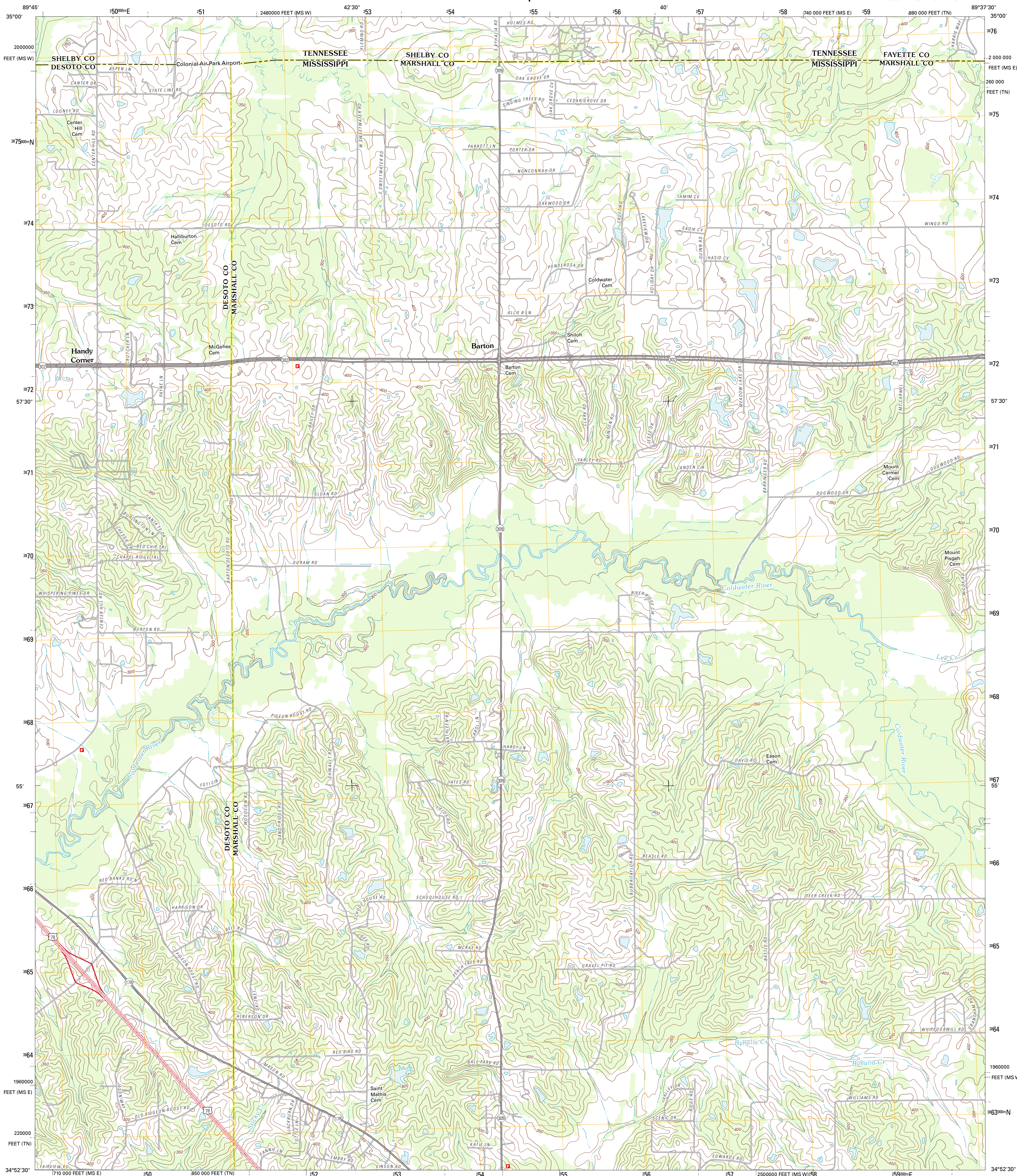




U.S. DEPARTMENT OF THE INTERIOR
U. S. GEOLOGICAL SURVEY

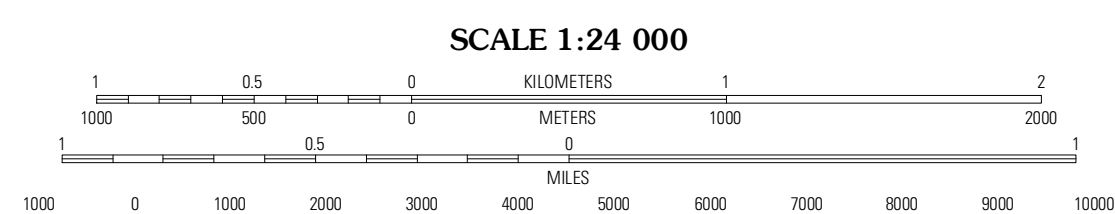
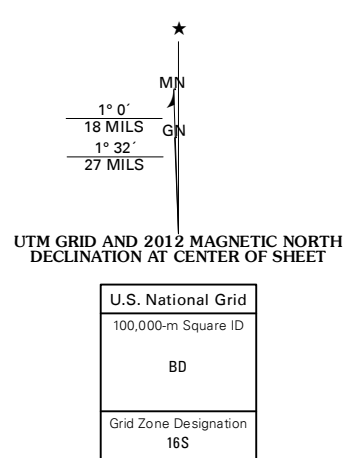


BYHALIA NW QUADRANGLE
MISSISSIPPI-TENNESSEE
7.5-MINUTE SERIES

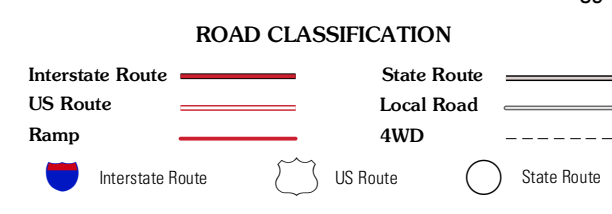
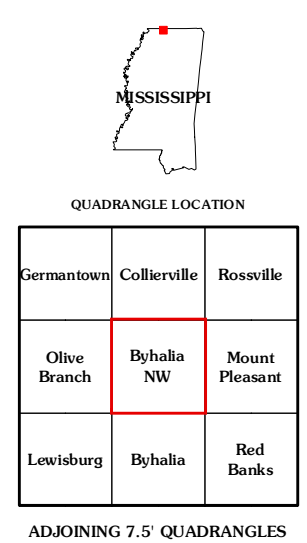


Produced by the United States Geological Survey
North American Datum of 1983 (NAD83)
World Geodetic System of 1984 (WGS84). Projection and
1 000-meter grid: Universal Transverse Mercator, Zone 16S
10 000-foot ticks: Mississippi Coordinate System of 1983
(east and west zones), Tennessee Coordinate System of 1983

Imagery.....NAP, July 2010
Roads.....©2006-2011 TomTom
Names.....GNIS, 2011
Hydrography.....National Hydrography Dataset, 2010
Contours.....National Elevation Dataset, 2001
Boundaries.....Census, IBWC, IBC, USGS, 1972 - 2010



CONTOUR INTERVAL 10 FEET
NORTH AMERICAN VERTICAL DATUM OF 1988
This map was produced to conform with the
National Geospatial Program US Topo Product Standard, 2011.
A metadata file associated with this product is draft version 0.6.2



| QUADRANGLE LOCATION | | |
|---------------------|-------------|----------------|
| Sermann | Collerville | Rossville |
| Olive Branch | Byhalia NW | Mount Pleasant |
| Lewisburg | Byhalia | Red Banks |

BYHALIA NW, MS-TN
2012

ADJOINING 7.5 QUADRANGLES