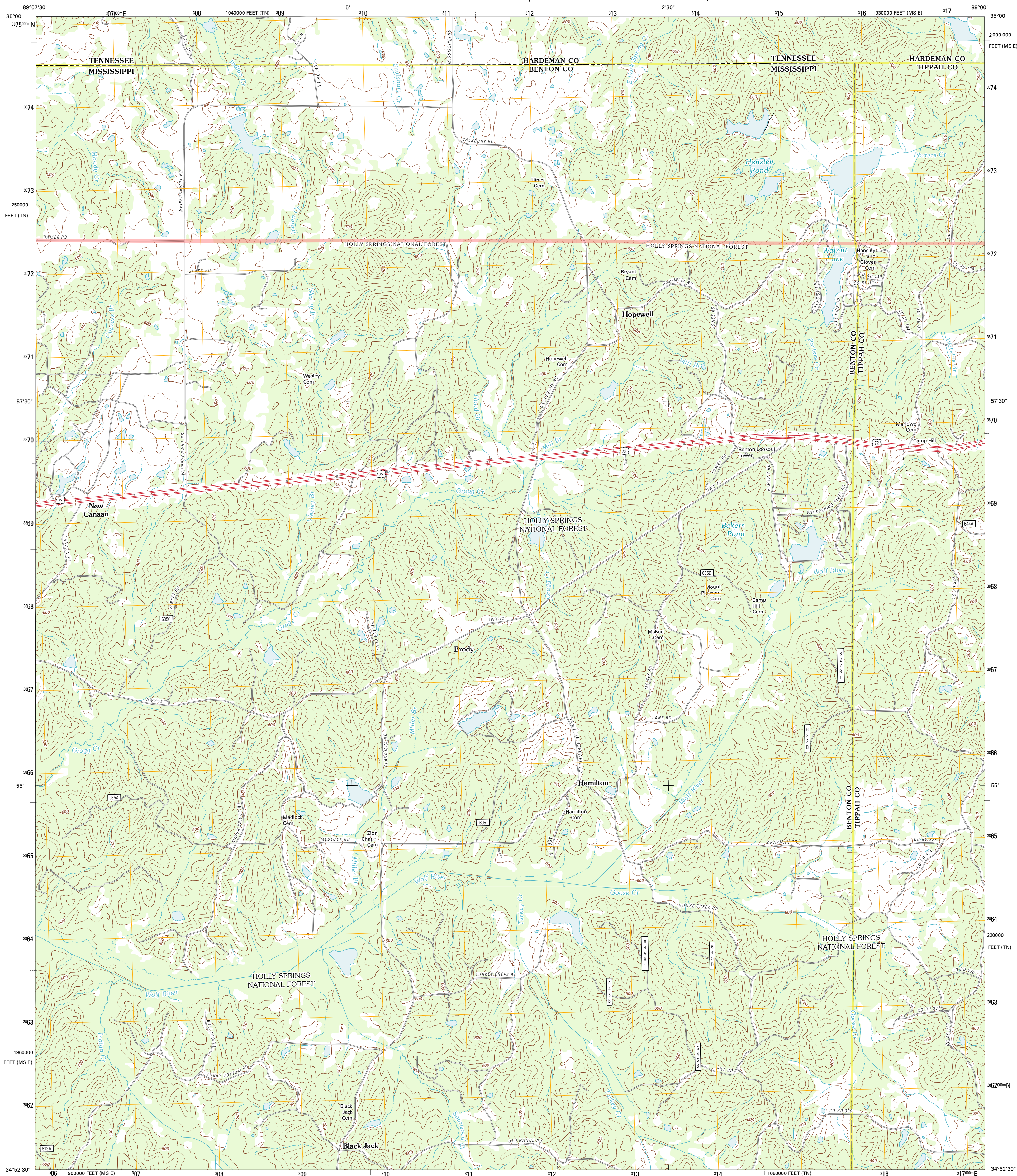




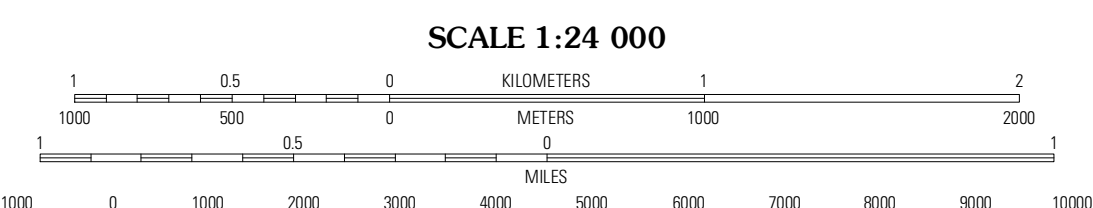
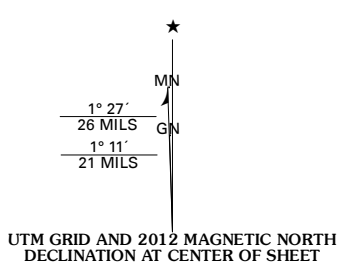
U.S. DEPARTMENT OF THE INTERIOR
U. S. GEOLOGICAL SURVEY



CAMP HILL QUADRANGLE
MISSISSIPPI-TENNESSEE
7.5-MINUTE SERIES



Produced by the United States Geological Survey
North American Datum of 1983 (NAD83)
World Geodetic System of 1984 (WGS84). Projection and
1 000-meter grid: Universal Transverse Mercator, Zone 16S
10 000-foot ticks: Mississippi Coordinate System of 1983
(east zone), Tennessee Coordinate System of 1983



CONTOUR INTERVAL 20 FEET
NORTH AMERICAN VERTICAL DATUM OF 1988

This map was produced to conform with the
National Geospatial Program US Topo Product Standard, 2011.
A metadata file associated with this product is draft version 0.6.2



QUADRANGLE LOCATION

Grand Junction	Salsbury	Middletown
Canaan	Camp Hill	Walnut
Abland	Whitson	Falkner

ADJOINING 7.5 QUADRANGLES

ROAD CLASSIFICATION

	Interstate Route		State Route
	US Route		Local Road
	Ramp		4WD
	FS Primary Route		FS Passenger Route
	FS High Clearance Route		State Route

Check with local Forest Service unit for current travel conditions and restrictions.

CAMP HILL, MS-TN
2012

Imagery: N/AIP, June 2010
Roads: 2006-2011 TomTom
Roads within US Forest Service Lands: FSTopo Data with limited Forest Service updates, 2009
Names: GNS, 2011
Hydrography: National Hydrography Dataset, 2010
Contours: National Elevation Dataset, 2001
Boundaries: Census, IBWC, IBC, USGS, 1972 - 2010

U.S. National Grid

100,000-m Square ID	CD
Grid Zone Designation	18S