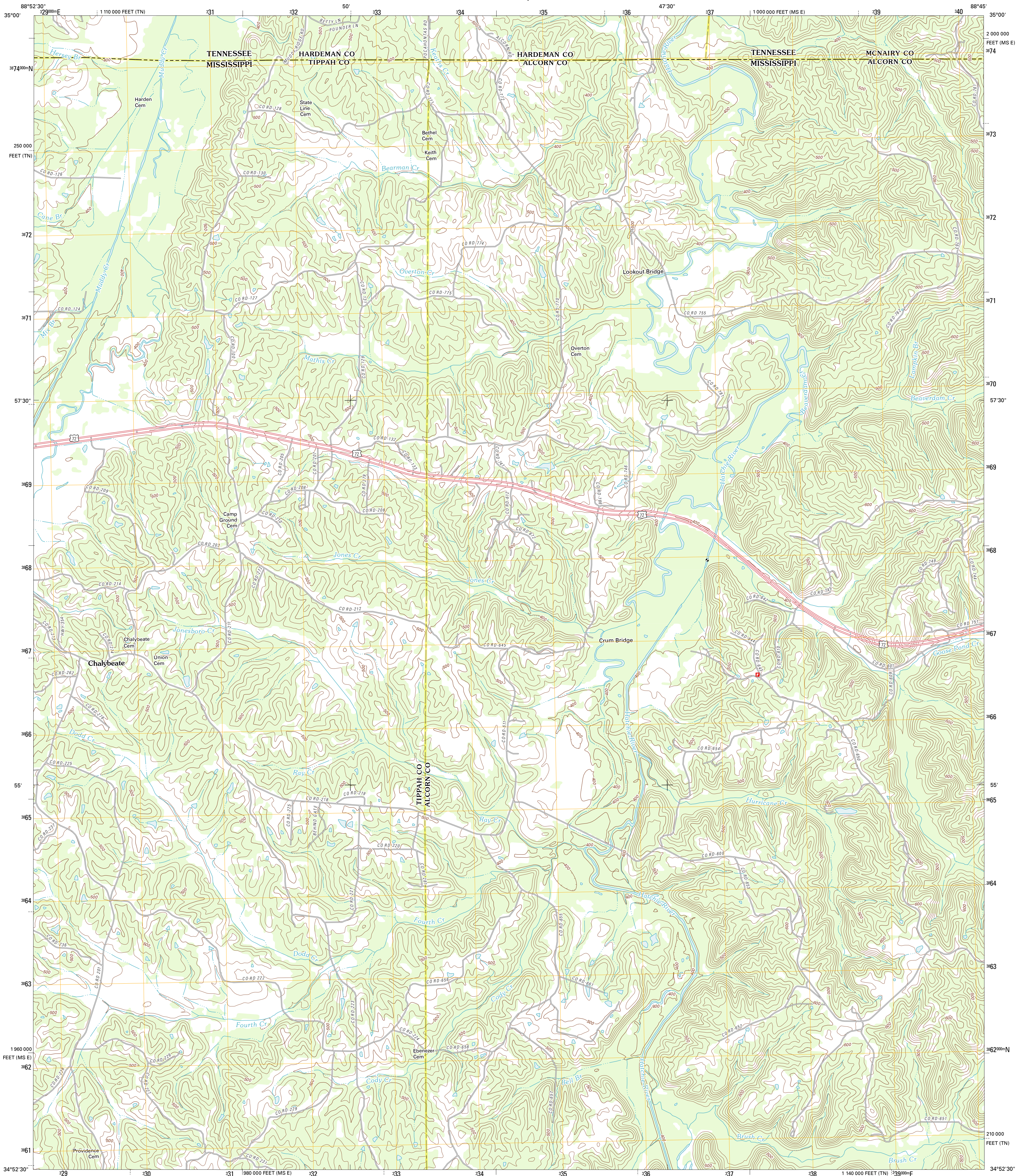




U.S. DEPARTMENT OF THE INTERIOR  
U. S. GEOLOGICAL SURVEY

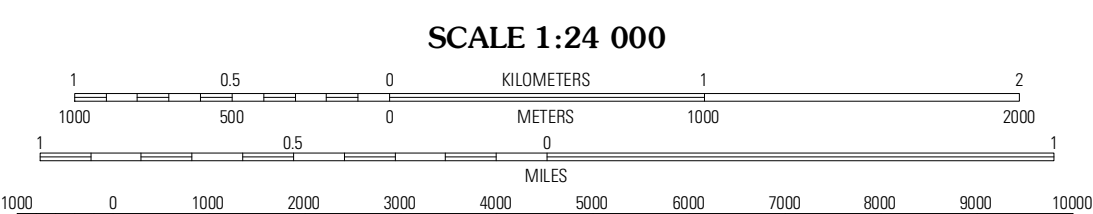
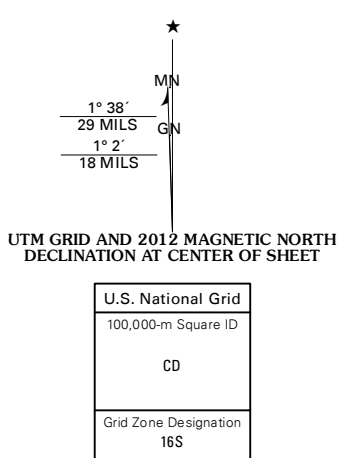


CHALYBEATE QUADRANGLE  
MISSISSIPPI-TENNESSEE  
7.5-MINUTE SERIES



Produced by the United States Geological Survey  
North American Datum of 1983 (NAD83)  
World Geodetic System of 1984 (WGS84). Projection and  
1 000-meter grid; Universal Transverse Mercator, Zone 16S  
10 000-foot ticks; Mississippi Coordinate System of 1983  
(east zone), Tennessee Coordinate System of 1983

Imagery.....NAIP, June 2010 - July 2010  
Roads.....©2006-2011 TomTom  
Names.....GNIS, 2011  
Hydrography.....National Hydrography Dataset, 2010  
Contours.....National Elevation Dataset, 2001  
Boundaries.....Census, IBWC, IBC, USGS, 1972 - 2010



CONTOUR INTERVAL 20 FEET  
NORTH AMERICAN VERTICAL DATUM OF 1988

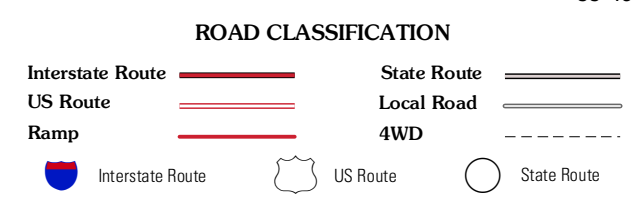
This map was produced to conform with the  
National Geospatial Program US Topo Product Standard, 2011.  
A metadata file associated with this product is draft version 0.6.2



QUADRANGLE LOCATION

Middleton	Pocahontas	Chewalls
Walnut	Chalybeate	Kossuth North
Fallner	Peoples	Kossuth South

ADJOINING 7.5 QUADRANGLES



CHALYBEATE, MS-TN  
2012