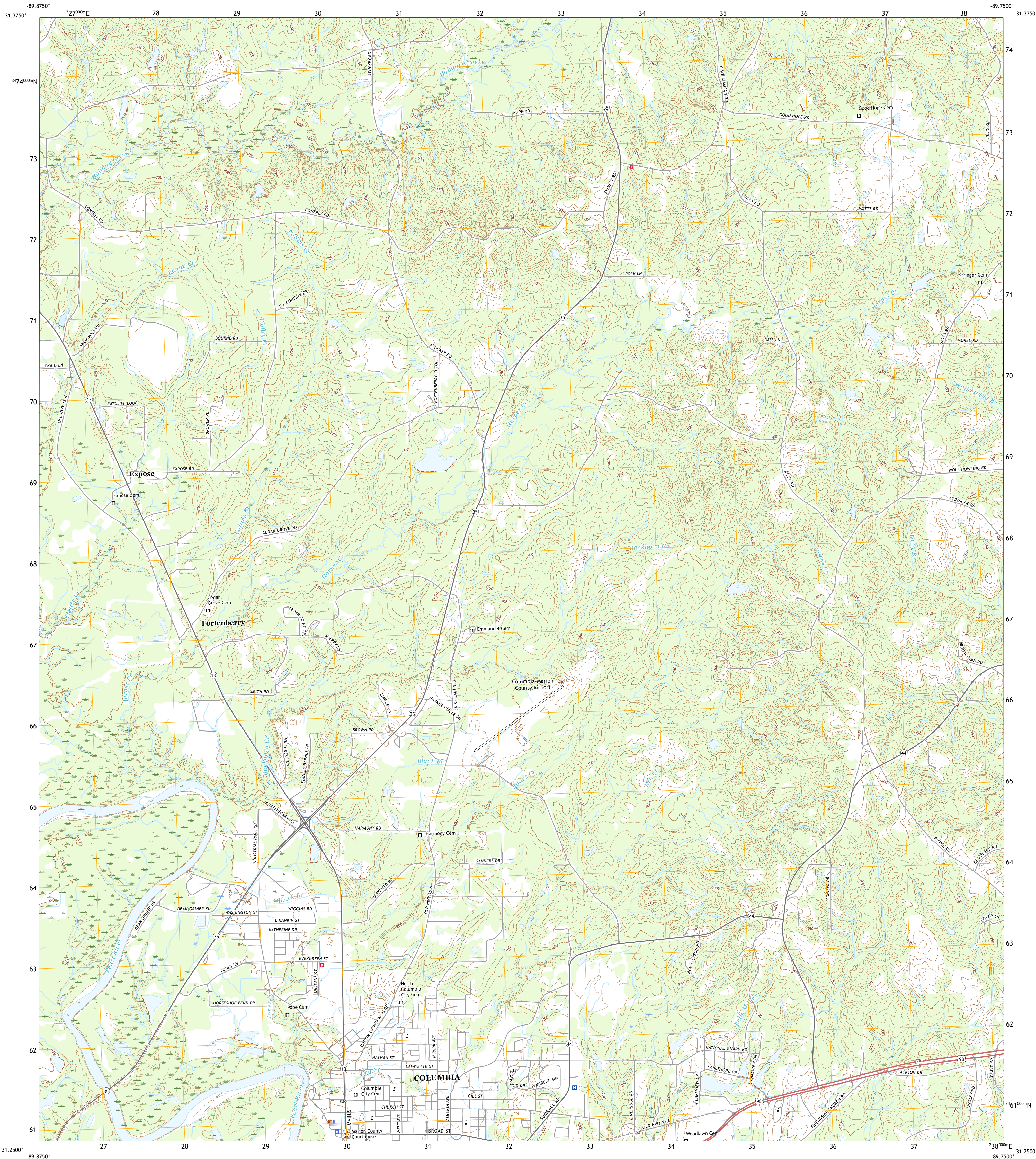




U.S. DEPARTMENT OF THE INTERIOR
U.S. GEOLOGICAL SURVEY

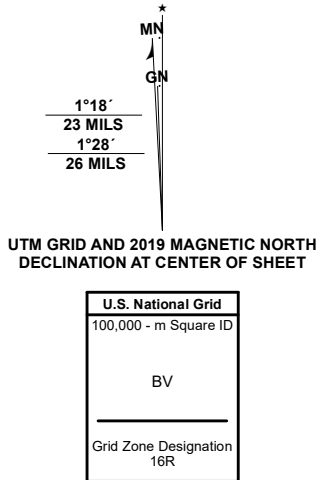


COLUMBIA NORTH QUADRANGLE
MISSISSIPPI - MARION COUNTY
7.5-MINUTE SERIES



Produced by the United States Geological Survey

North American Datum of 1983 (NAD83)
World Geodetic System of 1984 (WGS84). Projection and
1 000-meter grid/Universal Transverse Mercator, Zone 16R
This map is not a legal document. Boundaries may be
generalized for this map scale. Private lands within government
reservations may not be shown. Obtain permission before
entering private lands.
Imagery.....NAIP, December, 2020
Roads.....U.S. Census Bureau, 2017
Names.....GNIS, 1980-2020
Hydrography.....National Hydrography Dataset, 1989-2019
Contours.....National Elevation Dataset, 2016
Boundaries.....Multiple sources; see metadata file, 2018-2019
Public Land Survey System.....BLM, 2017
Wetlands.....FWS National Wetlands Inventory, Not Available



1	2	3
4	5	6
7	8	9

1 Oak Vale
2 Bunker Hill
3 Bassfield
4 Morgantown
5 Improve
6 Sandy Hook NW
7 Columbia South
8 Pinebur

ROAD CLASSIFICATION	
Expressway	Local Connector
Secondary Hwy	Local Road
Ramp	4WD
Interstate Route	US Route
	State Route

COLUMBIA NORTH, MS
2020

