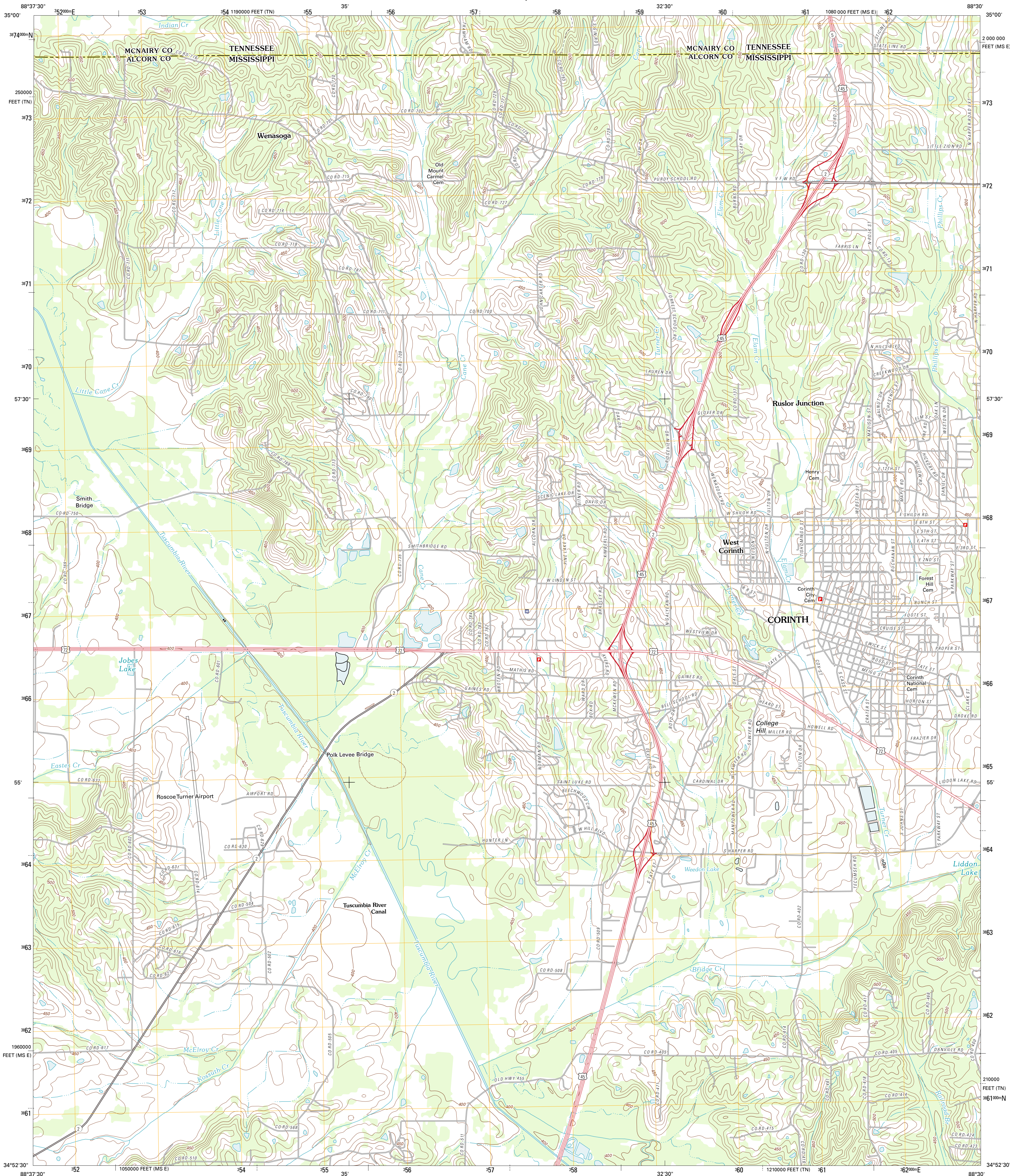




U.S. DEPARTMENT OF THE INTERIOR
U. S. GEOLOGICAL SURVEY



CORINTH QUADRANGLE
MISSISSIPPI-TENNESSEE
7.5-MINUTE SERIES



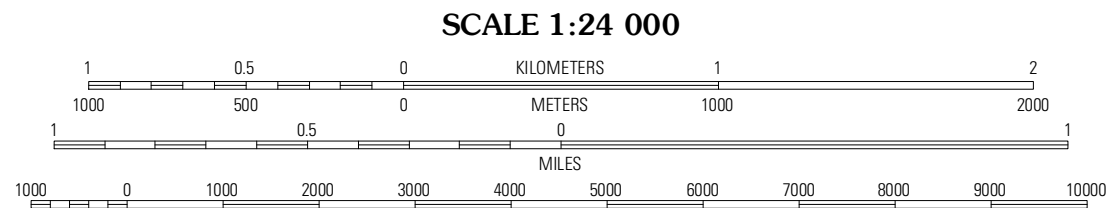
Produced by the United States Geological Survey
North American Datum of 1983 (NAD83)
World Geodetic System of 1984 (WGS84). Projection and
1 000-meter grid: Universal Transverse Mercator, Zone 16S
10 000-foot ticks: Mississippi Coordinate System of 1983
(east zone), Tennessee Coordinate System of 1983

Imagery.....N/AIP, June 2010
Roads.....2006-2011 TomTom
Names.....GNIS, 2011
Hydrography.....National Hydrography Dataset, 2010
Contours.....National Elevation Dataset, 2001
Boundaries.....Census, IBWC, IBC, USGS, 1972 - 2010

UTM GRID AND 2012 MAGNETIC NORTH
DECLINATION AT CENTER OF SHEET

1" = 49'
32 MILLS
17" = 54'
16 MILLS

| |
|-----------------------|
| U.S. National Grid |
| 100,000-m Square ID |
| CD |
| Grid Zone Designation |
| 16S |



CONTOUR INTERVAL 10 FEET
NORTH AMERICAN VERTICAL DATUM OF 1988

This map was produced to conform with the
National Geospatial Program US Topo Product Standard, 2011.
A metadata file associated with this product is draft version 0.6.2



| QUADRANGLE LOCATION | | |
|---------------------|----------------|----------|
| Chewalla | Guys | Michie |
| Kossuth North | Corinth | Kendrick |
| Kossuth South | Rienzi | Glenn |

ADJOINING 7.5' QUADRANGLES

| ROAD CLASSIFICATION | |
|---------------------|-------------|
| Interstate Route | State Route |
| US Route | Local Road |
| Ramp | 4WD |

CORINTH, MS-TN
2012